

Working Instructions

- mechanical -



Xperia™ Z3

D6633, L55u, L55t, D6683

CONTENTS

7		
1	Exterior Views.....	4
1.1	D6633, L55u & L55t	4
2	Tools	5
3	Disassembly.....	7
3.1	Rear Panel	7
3.2	Embedded Battery	8
3.3	Cover Holder –A, Sub Antenna, Antenna BT + WLAN.....	9
3.4	Holder Speaker sub assembly	10
3.5	Main PBA	12
3.6	Front Assy	13
4	Replacement	14
4.1	SIM Tray	14
4.2	Rear Panel	14
4.3	Adhesive Rear Panel.....	14
4.4	Cushion Battery	14
4.5	Embedded Battery&Sheet Battery Long&Sheet Battery Short	15
4.6	Cover Holder -A.....	16
4.7	Sub Antenna.....	17
4.8	Antenna BT + WLAN	18
4.9	Sheet ACO L & Sheet ACO R.....	19
4.10	Screw M14×3.3	20
4.11	RF Cable	21
4.12	Main Antenna.....	22
4.13	Holder Speaker sub assembly	22
4.14	Sub PBA-A & Sheet Sub PBA.....	23
4.15	Sub PBA-B.....	24
4.16	Film Display BtB.....	24
4.17	Front Assy	25
4.18	Sub Camera & Sheet Chat Camera	26
4.19	Cap USB.....	27
4.20	Cap SIM.....	28
4.21	Core Unit Label.....	29
4.22	Gore Sheet(1st mic)	30
4.23	Loudspeaker B & Grill Receiver Black	31
4.24	Audio Jack & Cushion Audio Jack FPC BtB	33
4.25	Charge FPC & Adhesive Charge FPC	36
4.26	Relay FPC PBA &Adhesive Relay FPC A &Adhesive Relay FPC B	41
4.27	Holder Mic sub assembly	46

4.28	Cushion Relay FPC BtB & Cushion Relay FPC bottom BtB & Cushion 10pin BB speaker	48
4.29	Cushion MIC	49
4.30	Plate holder speaker	50
4.31	Cushion Battery FPC BtB	53
4.32	Cushion Rear Panel	54
4.33	Shield Main Camera	55
4.34	Main Camera & Cushion Camera BtB	56
4.35	Label tray	57
4.36	Liquid indicator	59
4.37	Label Guide	60
4.38	Holder Receiver sub assembly	62
4.39	Holder key volume	63
4.40	Magnetic connector	65
4.41	Gasket conductive USB	66
4.42	Gasket speaker rubber	67
4.43	Cushion Chat Camera	68
4.44	Sheet Sub PBA	69
4.45	Lightguide 3 LED	70
4.46	Film for TP FPC	71
4.47	Dummy SIM assy (L55t only)	72
4.48	Adhesive Battery Front	73
4.49	Adhesive WP Audio Jack	74
4.50	Board Swap - Replacement	75
4.51	Board Swap – Change Label	76
4.52	Board Swap – Customize of Software	76
5	Reassembly	77
5.1	Front Assy	77
5.2	Main PBA	77
5.3	Holder Speaker sub assembly	78
5.4	Cover Holder –A, Sub Antenna, Antenna BT + WLAN	80
5.5	Embedded Battery	82
5.6	Rea Panel	84
6	Revision History	87
	Delete Sheet Sub ANT chapter, no need this part anymore	87

**For general information about mechanical repair related issues, refer to
1220-1333: Generic Repair Manual - mechanical**

1 Exterior Views

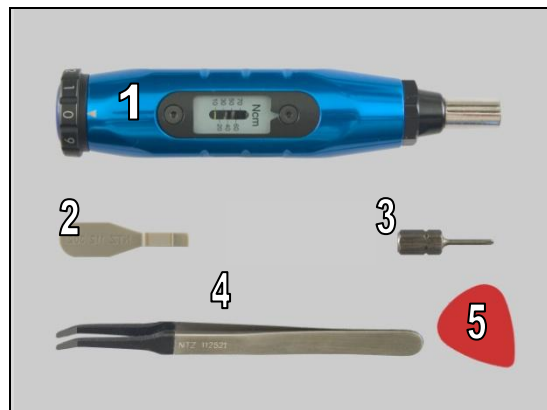
1.1 D6633, L55u, L55t & D6683



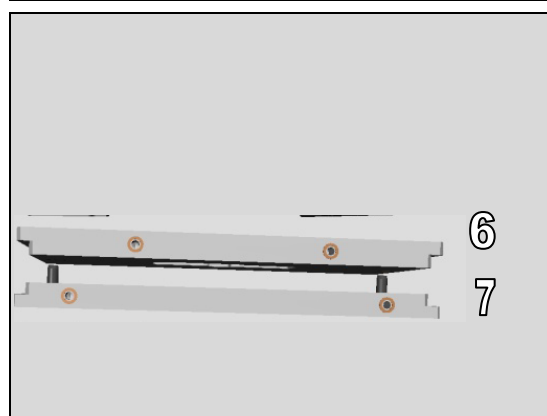
2 Tools

SPECIAL TOOLS

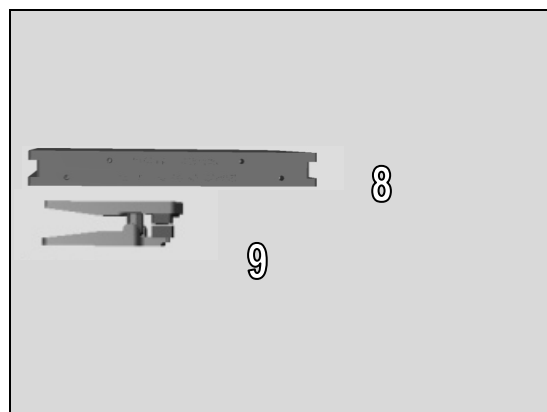
1. Torque Screwdriver
2. Front Opening Tool
3. Bits (JCIS No 0)
4. Flex Film Assembly Tool
5. Guitar Pick



6. Rear Panel Press Top Inlay(1287-4891)
7. Bottom Press Inlay(1287-4890)



8. Rear Panel Adhesive alignment fixture(1287-4892)
9. Audio Jack Press(1287-4893)

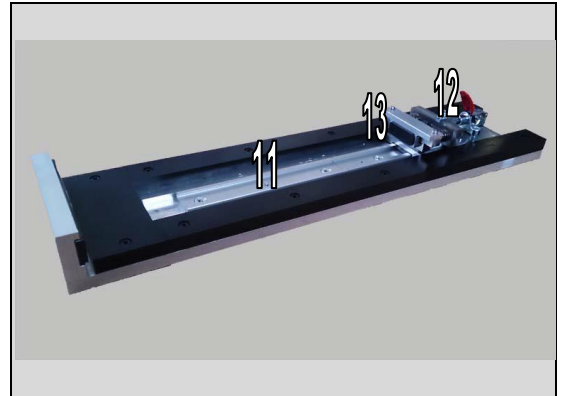


10. WRT Inlay Plate(1287-4895)



Tools

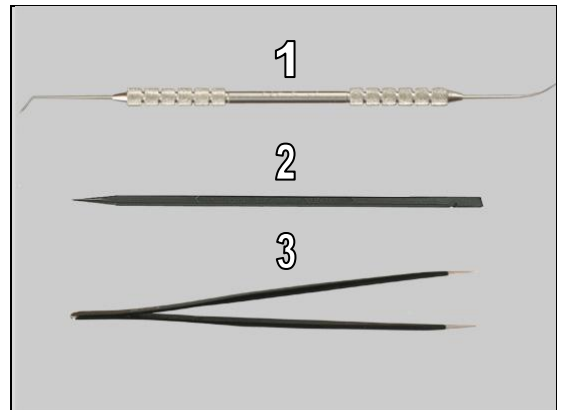
- 11. Side Panel press
- 12. Side Panel Press Head
- 13. Charge connector press pad



For part no's on the tools above, refer to the 'Tools Catalogue/Matrix'.

STANDARD TOOLS

- 1. Dentist Hook
- 2. Nylon Pointer
- 3. Tweezers



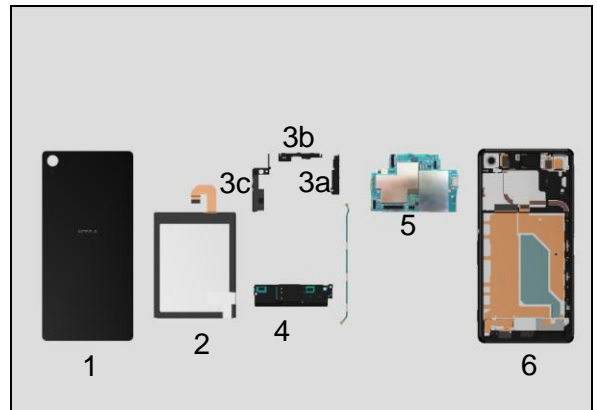
- 4. Suction Cup



3 Disassembly

The disassembly is done in the following order:

1. Rear Panel
2. Embedded Battery
3. Cover Holder –A(a), Sub Antenna(b), Antenna BT + WLAN(c)
4. Holder Speaker sub assembly
5. Main PBA
6. Front Assy

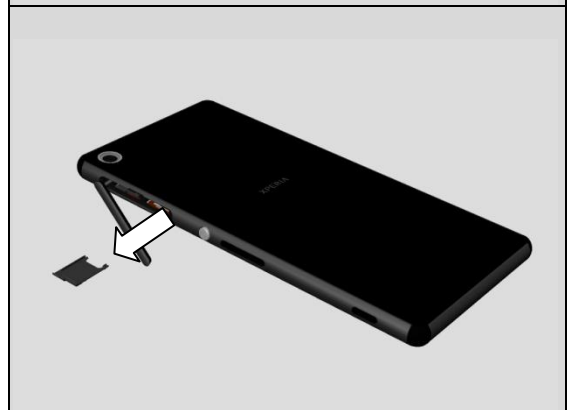


3.1 Rear Panel

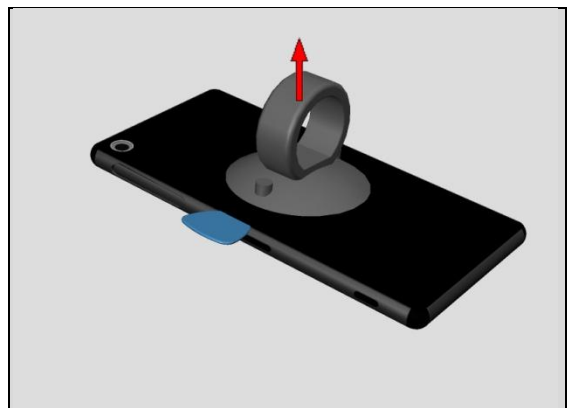
Open the Cap SIM and remove the SIM Tray (Two SIM Tray for D6633, L55u, D6683).
Then Close the Cap SIM.



Open the Cap SIM and remove the SIM Tray (One SIM Tray for L55t).
Then Close the Cap SIM.



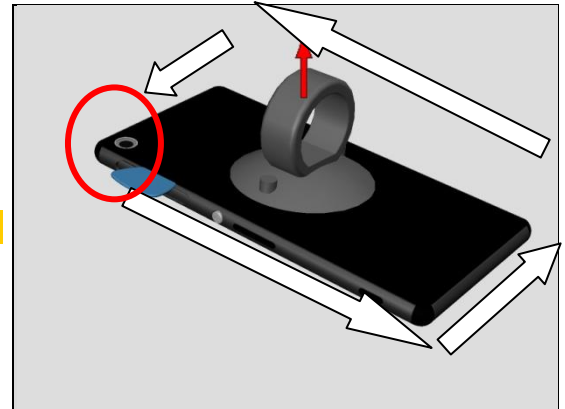
Attach the Suction cup, insert the Guitar Pick.



Disassembly

Slide along all sides.

Note: Do not slide Camera corner area.

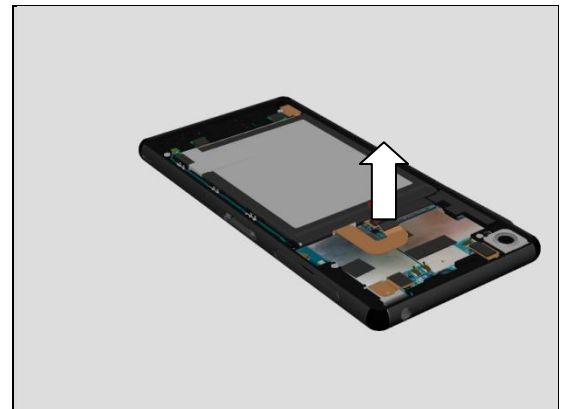


Remove the Rear Panel.



3.2 Embedded Battery

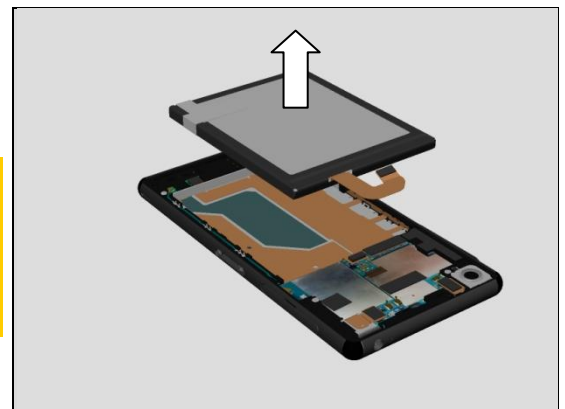
Unsnap the BtB connector of the Embedded Battery.



Lift up the Embedded Battery at an angle and remove the Embedded Battery.

Note: the Film part of Adhesive Battery Front maybe peeled off together with Embedded Battery.

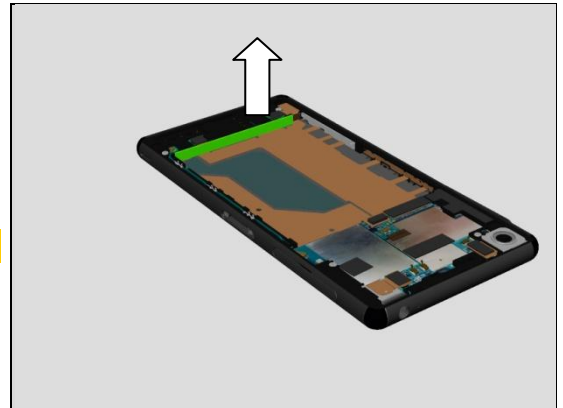
Embedded Battery together with the film part of Adhesive Battery Front could be reused if not damaged.



Disassembly

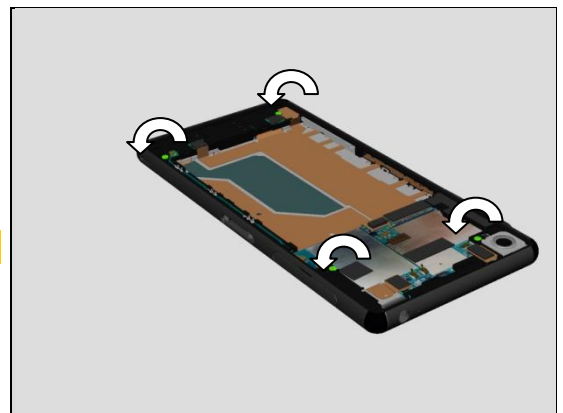
Remove the Cushion Battery.

Scrap! Not to be reused.



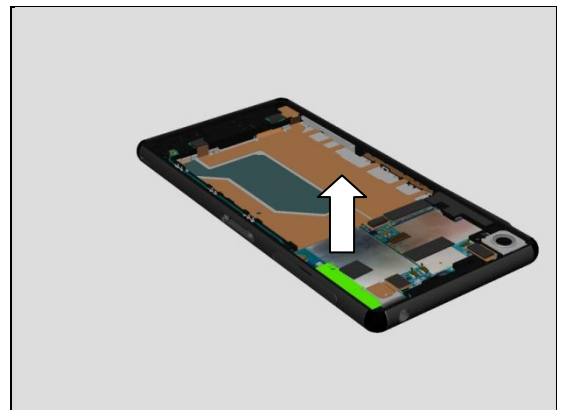
Remove the four Screws by using a screwdriver with Bits (JCIS No 0).

Scrap! Not to be reused.



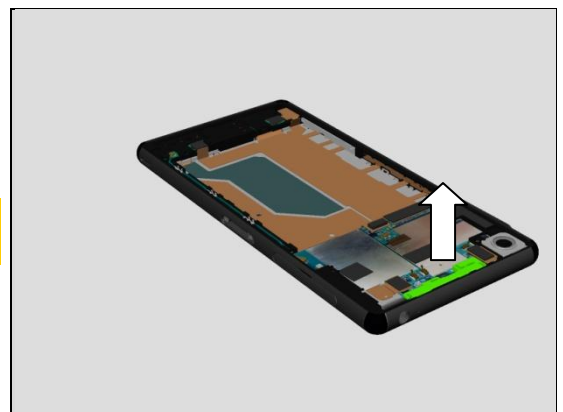
3.3 Cover Holder –A, Sub Antenna, Antenna BT + WLAN

Remove the Cover Holder –A from Main PBA.



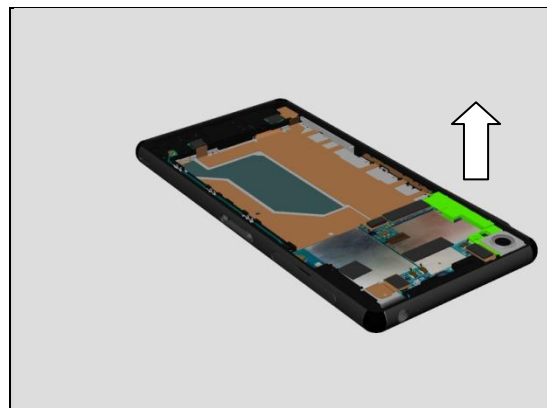
Remove the Sub Antenna from Main PBA.

Note: be careful about the hooks of Sub Antenna avoiding being damaged!

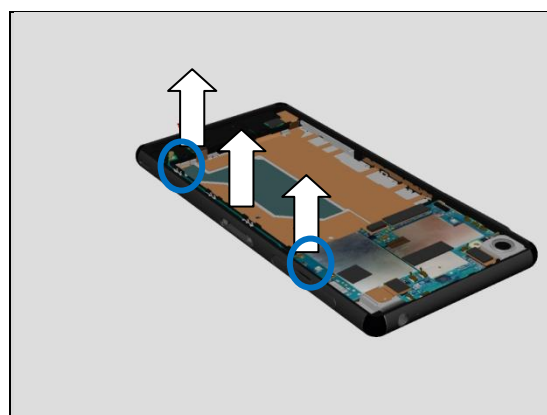


Disassembly

Remove the Antenna BT + WLAN from Main PBA.

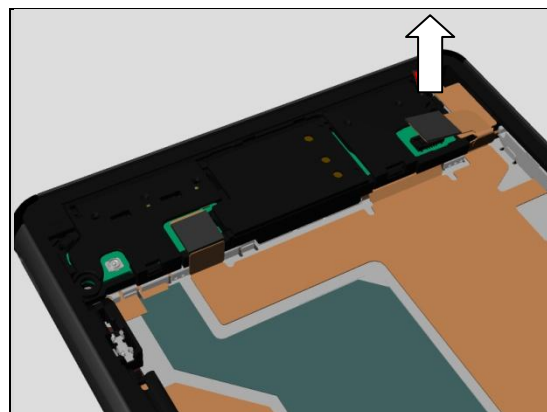


Open two RF connectors and Remove the RF Cable from its cavity.

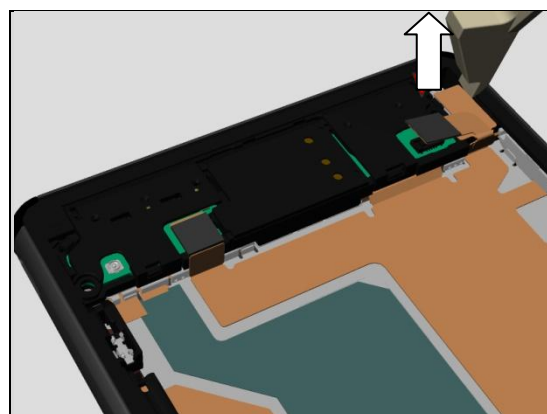


3.4 Holder Speaker sub assembly

Unsnap the BtB connector from Sub PBA-B as shown.

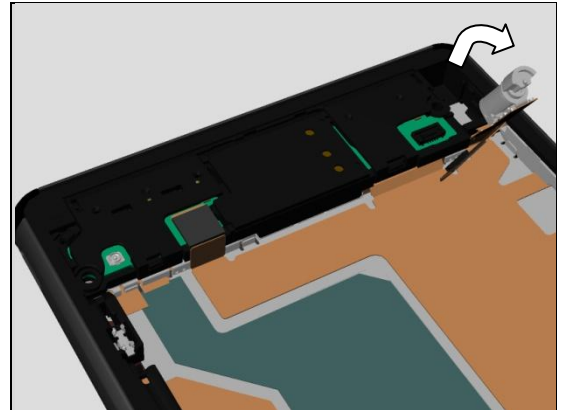


Insert Front Opening Tool to release vibrator's hook from Front Assy.

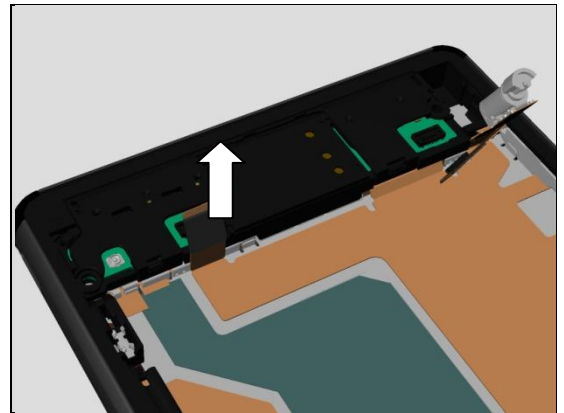


Disassembly

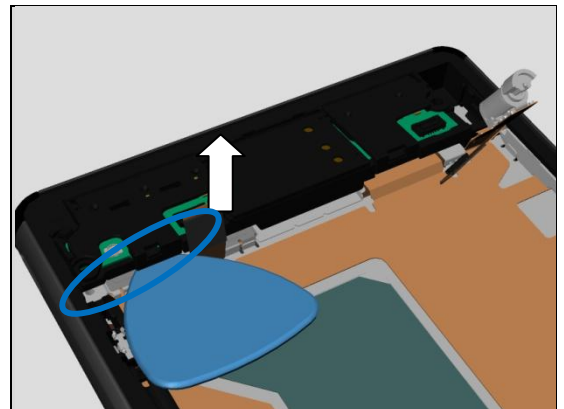
Turn over the vibrator FPC.



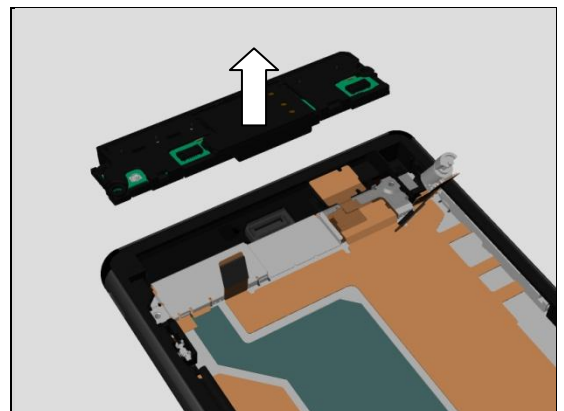
Unsnap the BtB connector from Sub PBA-A as shown.



Insert Guitar Pick under Holder Speaker sub assembly as shown to lift its bottom side up.



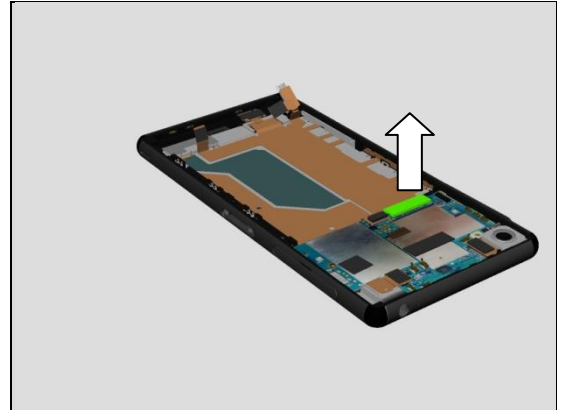
Remove the Holder Speaker sub assembly from Front Assy.



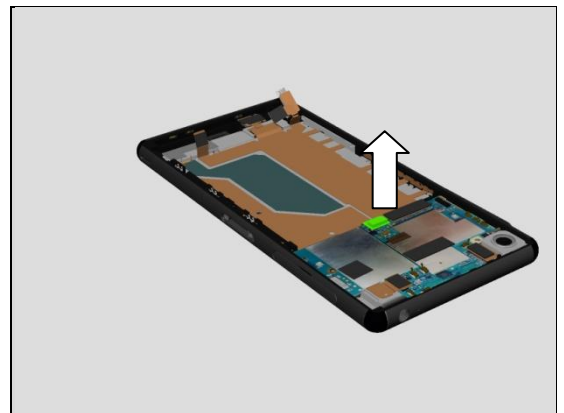
Disassembly

3.5 Main PBA

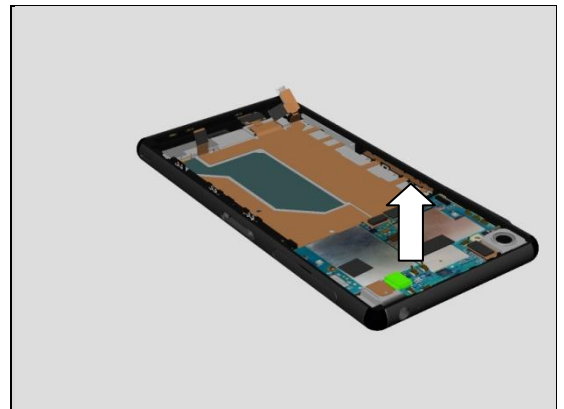
Unsnap the BtB connector of Relay FPC PBA.



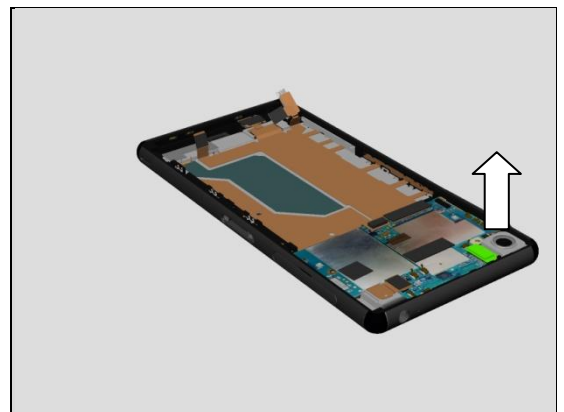
Unsnap the BtB connector of Charge FPC.



Unsnap the BtB connector of Audio Jack.

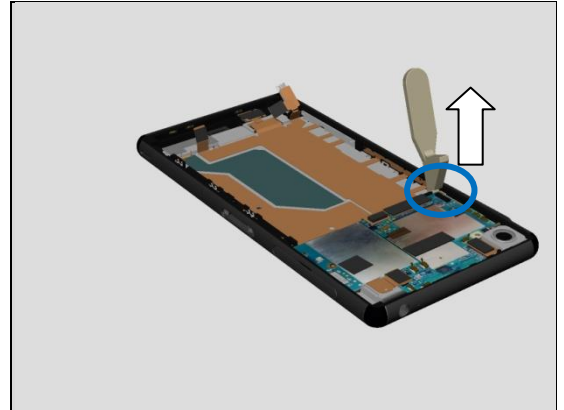


Unsnap the BtB connector of Main Camera.

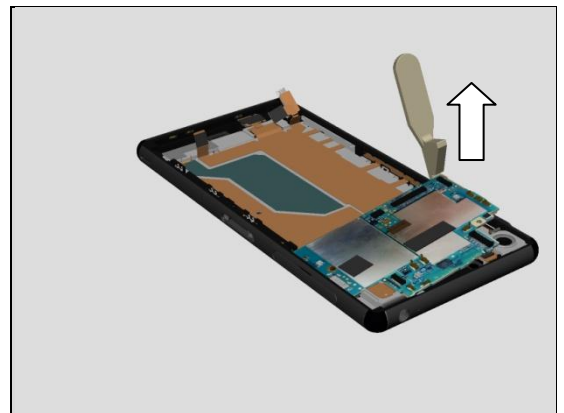


Disassembly

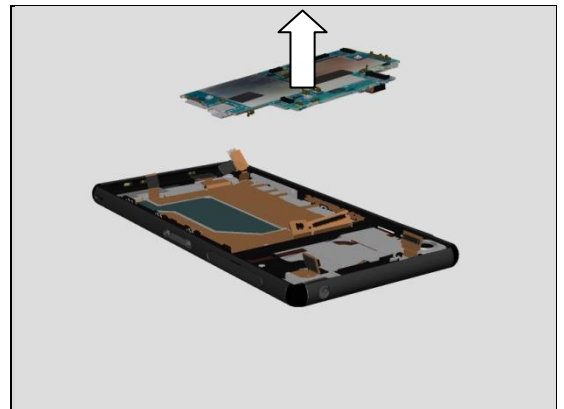
Insert the Front Opening Tool to release the Main PBA's hook.



Lift up the main PBA.

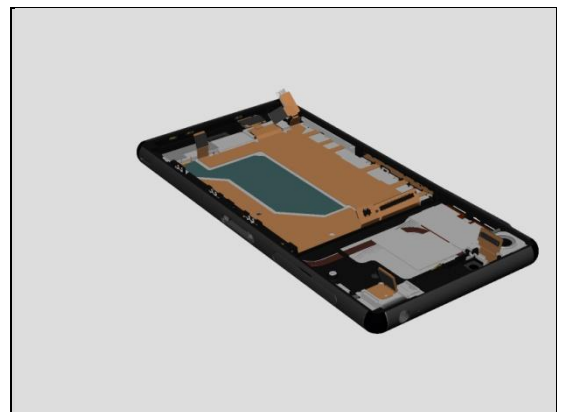


Remove the Main PBA from the Front Assy.



3.6 Front Assy

Front Assy as shown.



4 Replacement

4.1 SIM Tray

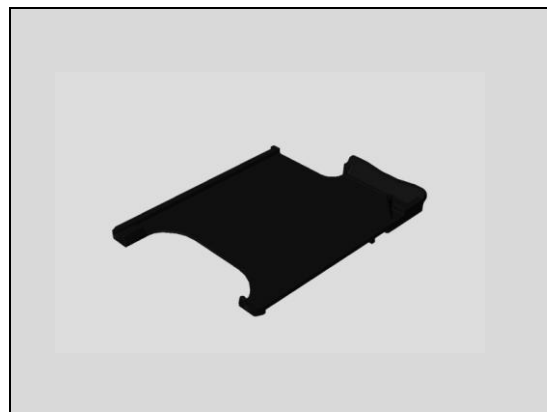
Follow the 3.1 Disassembly instructions!

Prepare the new SIM Tray.

Follow the 5.6 Reassembly instructions!

Note: D6633, L55u have two SIM Trays.

L55t has only one SIM Tray.



4.2 Rear Panel

Follow the 3.1 Disassembly instructions!

Prepare the new Rear Panel.

Follow the 5.6 Reassembly instructions!

Note: New Rear Panel already has Adhesive Rear Panel.



4.3 Adhesive Rear Panel

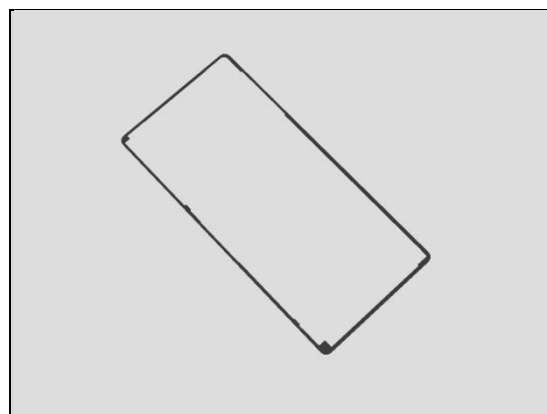
Follow the 3.1 Disassembly instructions!

Prepare the new Adhesive Rear Panel.

Follow the 5.6 Reassembly instructions!

Note: old Adhesive Rear Panel could not be reused.

Scrap!



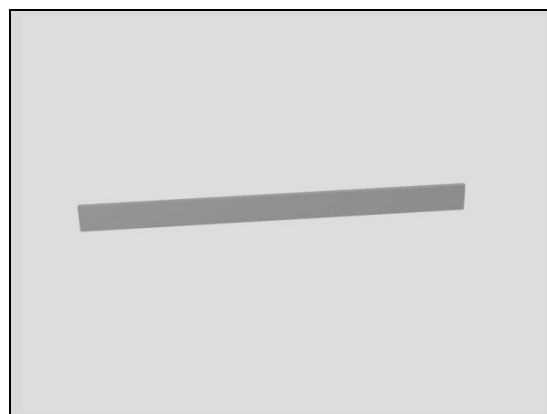
4.4 Cushion Battery

Follow the 3.1 – 3.2 Disassembly instructions!

Prepare the new Cushion Battery.

Follow the 5.5 – 5.6 Reassembly instructions!

Scrap! Not to be reused.



Replacement

4.5 Embedded Battery&Sheet Battery Long&Sheet Battery Short

Follow the 3.1 – 3.2 Disassembly instructions!

Prepare the new Embedded Battery& Sheet Battery Short (3ps) & Sheet Battery Long (1pcs).

Carry out the Installation as described below.

Follow 4.48 4.31 Installation instructions.

Follow the 5.5 – 5.6 Reassembly instructions!

Note: Must use new Adhesive Battery Front.

Visual Inspection of Emedded Battery.

INSTALLATION

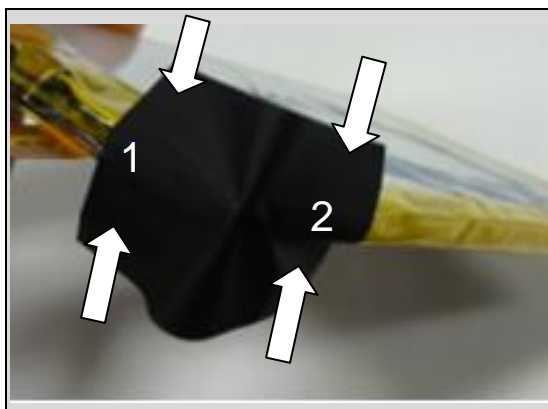
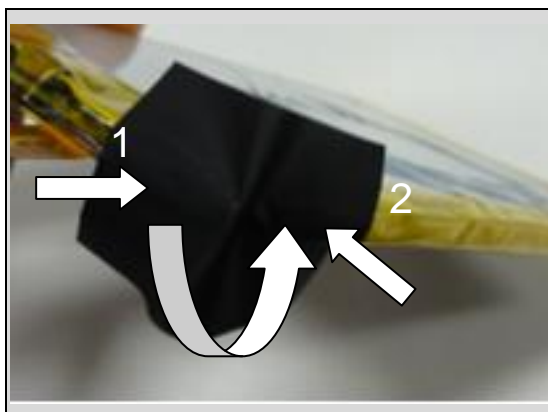
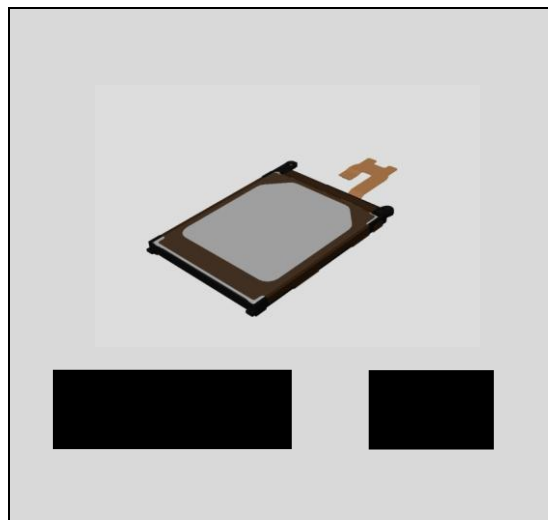
Prepare New Embedded Battery.

Assemble the Sheet Battery Short as shown at corner one side first.

Then bend the Sheet Battery Short to another side.

Bend two sides as shown and attach two sides to Embedded Battery.

Sheet Battery Short is assembled on Embedded Battery corner as shown.

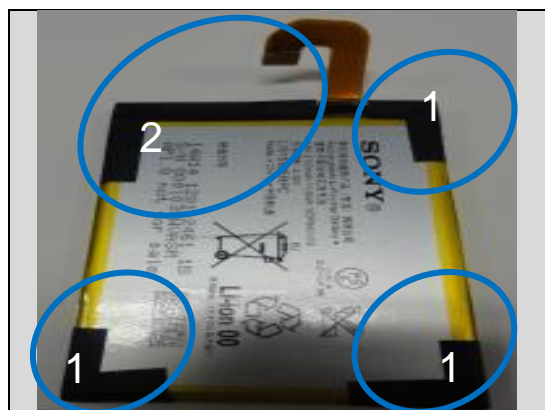


Replacement

Sheet Battery Short is assembled on three corners as shown (Position 1).

Sheet Battery Long is assembled on one corner as shown (Position 2).

Note: Pay more attention about FPC area.



4.6 Cover Holder -A

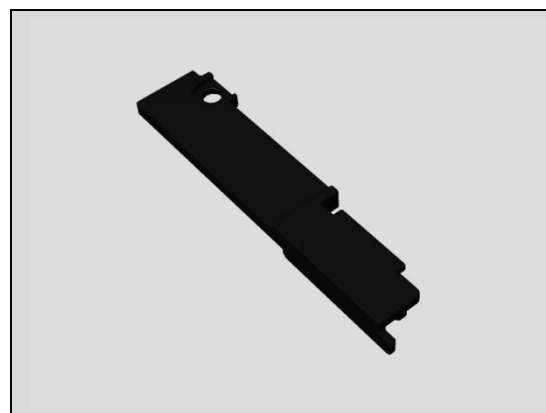
Follow the 3.1 Disassembly instructions!

Carry out the Removal as described below.

Prepare the new Cover Holder -A.

Carry out the Installation as described below.

Follow the 5.6 Reassembly instructions!

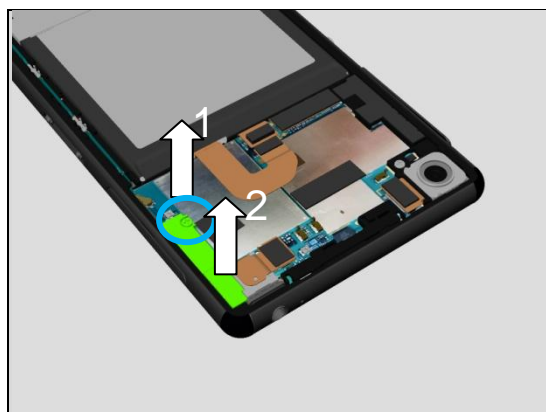


REMOVAL

Remove the Screw by using a screwdriver with Bits (JCIS No 0).

Scrap! Not to be reused.

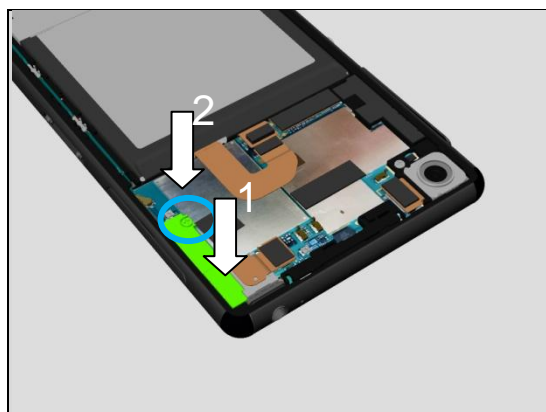
Remove Cover Holder -A from Main PBA.



INSTALLATION

Assemble new Cover Holder -A at its correct position as shown.

Apply 12 ± 1 Ncm torque when tightening the Screw Bits (JCIS No 0).



Replacement

4.7 Sub Antenna

Follow the 3.1 Disassembly instructions!

Carry out the Removal as described below.

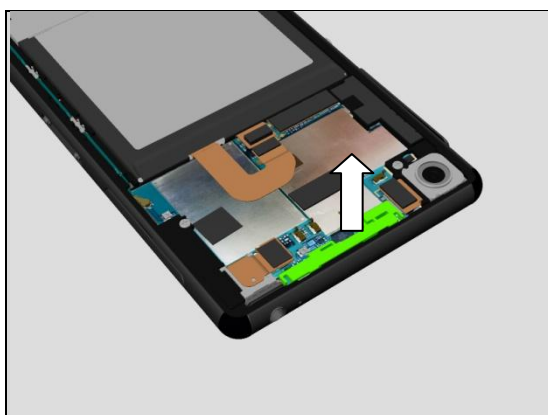
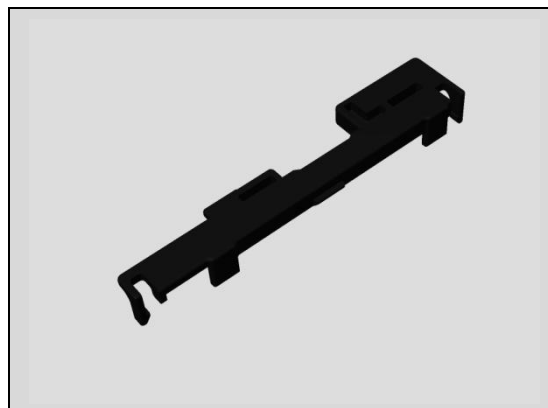
Prepare the new Sub Antenna.

Carry out the Installation as described below.

Follow the 5.6 Reassembly instructions!

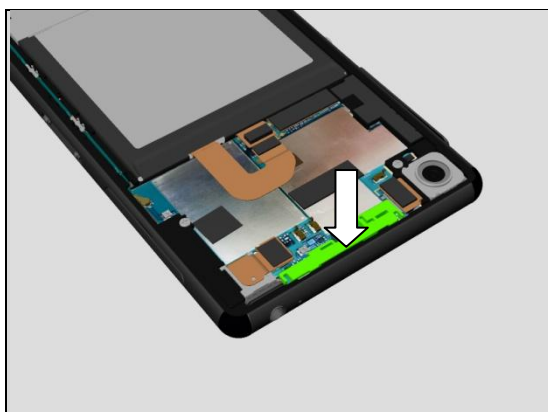
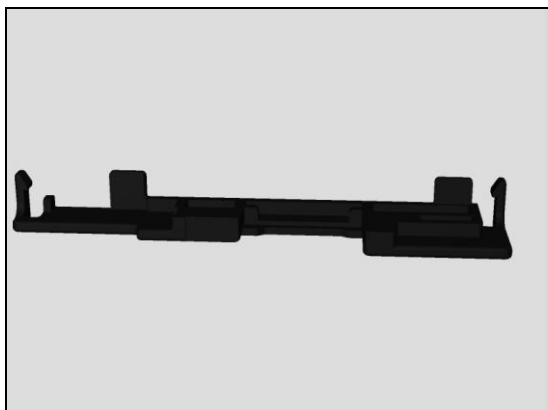
REMOVAL

Remove the Sub Antenna from Main PBA.



INSTALLATION

Prepare the new Sub Antenna.



Assemble new Sub Antenna onto Main PBA.

Press to secure its hooks is properly assembled.

Replacement

4.8 Antenna BT + WLAN

Follow the 3.1 Disassembly instructions!

Carry out the Removal as described below.

Prepare the new Antenna BT + WLAN.

Carry out the Installation as described below

Follow the 5.6 Reassembly instructions!

REMOVAL

Remove the Screw by using a screwdriver with Bits (JCIS No 0).

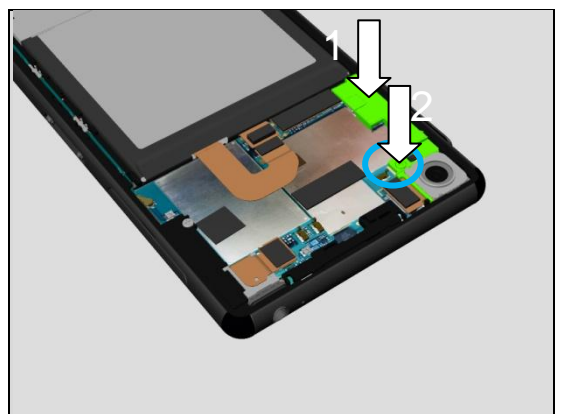
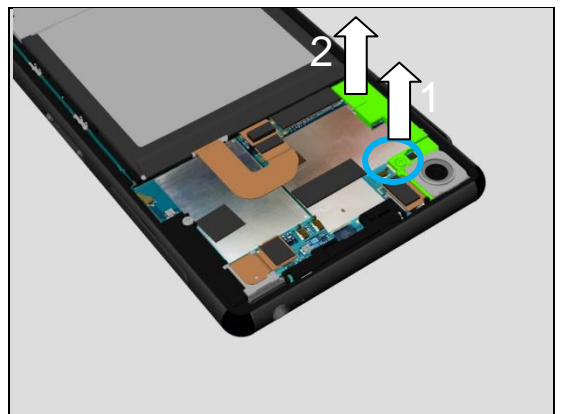
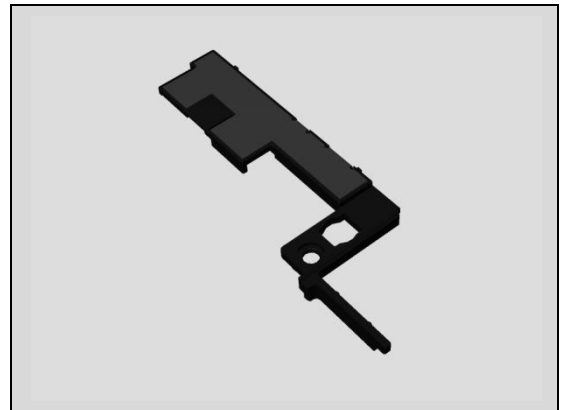
Scrap! Not to be reused.

Remove Antenna BT + WLAN from Main PBA.

INSTALLATION

Assemble Antenna BT + WLAN on Main PBA.

Apply 12 ± 1 Ncm torque when tightening the Screw Bits (JCIS No 0).



Replacement

4.9 Sheet ACO L & Sheet ACO R

Follow the 3.1 Disassembly instructions!

Carry out the Removal as described below.

Prepare the new Sheet ACO L(a) & Sheet ACO R(b).

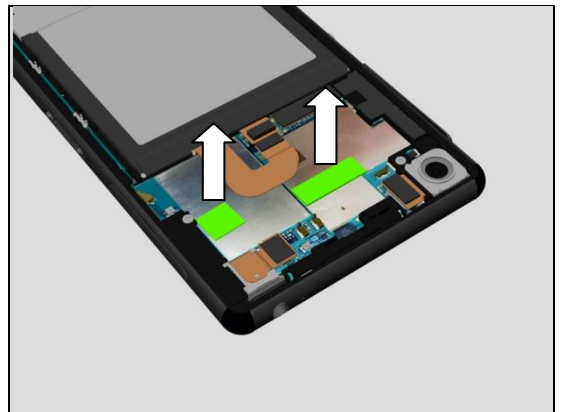
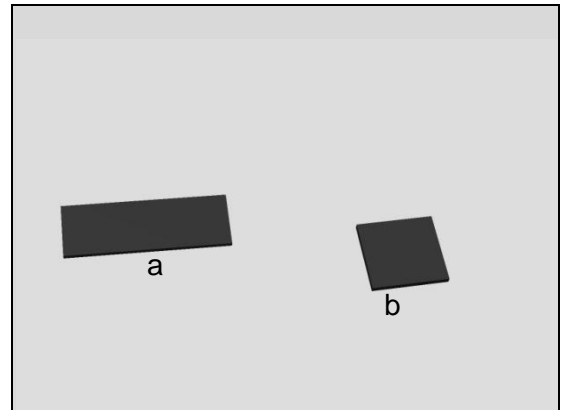
Carry out the Installation as described below

Follow the 5.6 Reassembly instructions!

REMOVAL

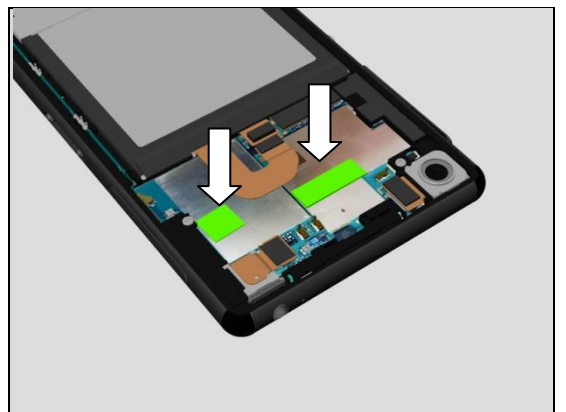
Remove the Sheet ACO L & Sheet ACO R from Main PBA.

Note: Clean surplus of Sheet ACO L & Sheet ACO R from Rear Panel if has.



INSTALLATION

Assemble new Sheet ACO L & Sheet ACO R on Main PBA at their correct position as shown.



Replacement

4.10 Screw M14x3.3

Follow the 3.1 Disassembly instructions!

Carry out the Removal as described below.

Prepare the new Screw M14x3.3.

Carry out the Installation as described below

Follow the 5.6 Reassembly instructions!

REMOVAL

Remove the four Screws by using a screwdriver with Bits (JCIS No 0).

Scrap! Not to be reused.

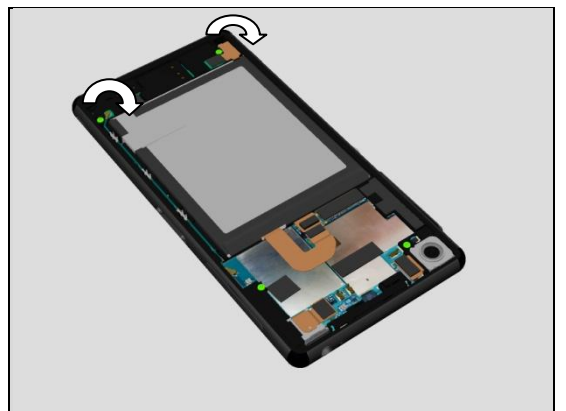
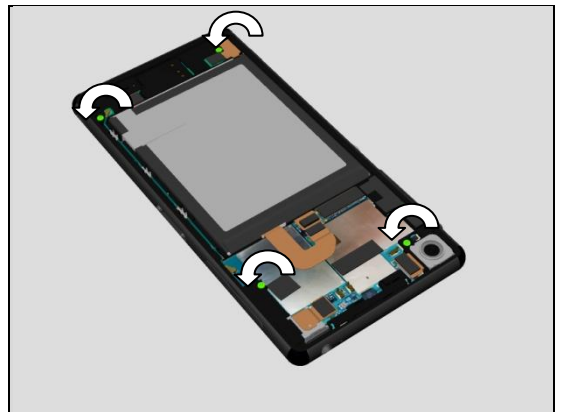
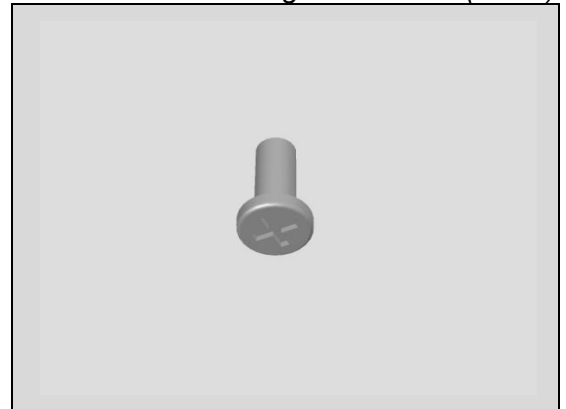
INSTALLATION

Apply 12 ± 1 Ncm torque on Main PBA when tightening the Screw Bits (JCIS No 0).

Take new Screws!

Apply 8 ± 1 Ncm torque on Holder Speaker sub assembly when tightening the Screw Bits (JCIS No 0).

Take new Screws!



Replacement

4.11 RF Cable

Follow the 3.1 Disassembly instructions!

Carry out the Removal as described below.

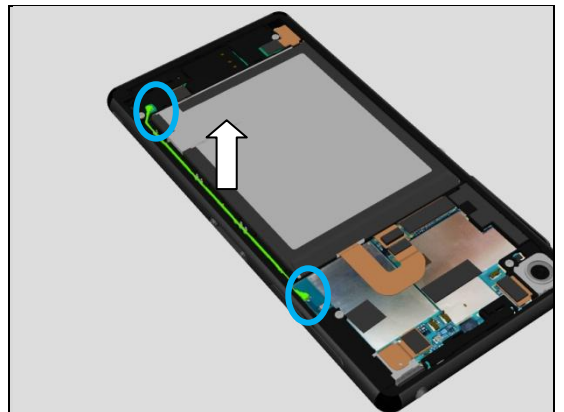
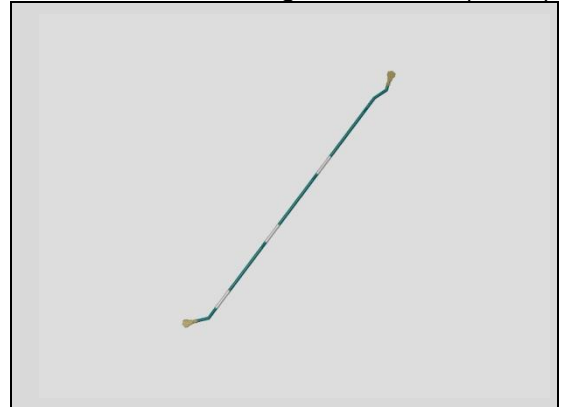
Prepare the new RF Cable.

Carry out the Installation as described below

Follow the 5.6 Reassembly instructions!

REMOVAL

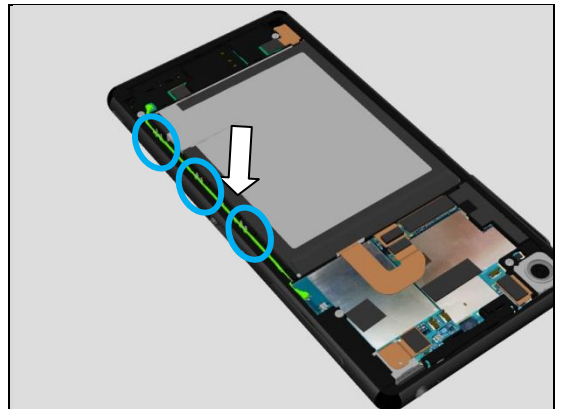
Open two RF connectors and remove the RF Cable from its cavity.



INSTALLATION

Assemble RF Cable into its cavity and connect two RF connectors.

Note: the RF Cable has direction. The long Metal side is towards Main PBA.



Replacement

4.12 Main Antenna

Follow the 3.1 – 3.4 Disassembly instructions!

Carry out the Removal as described below.

Prepare the new Main Antenna.

Carry out the Installation as described below

Follow the 5.3 – 5.6 Reassembly instructions!

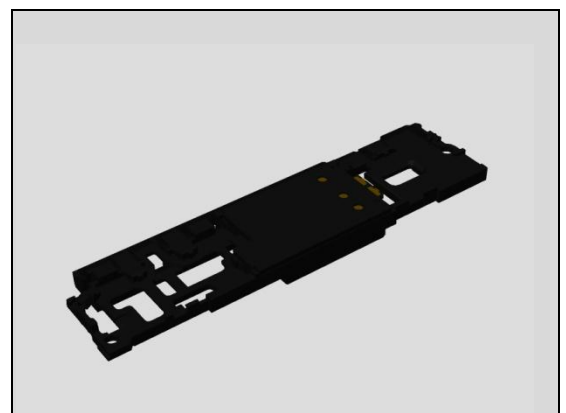
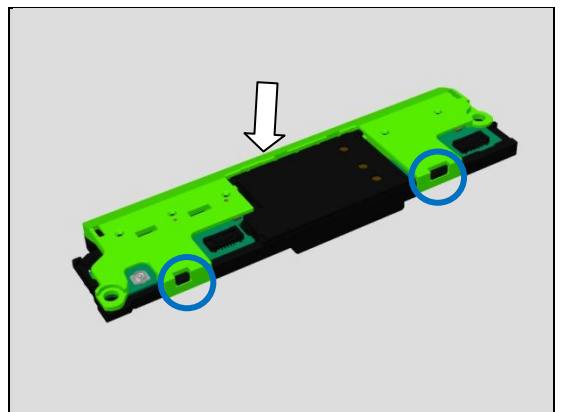
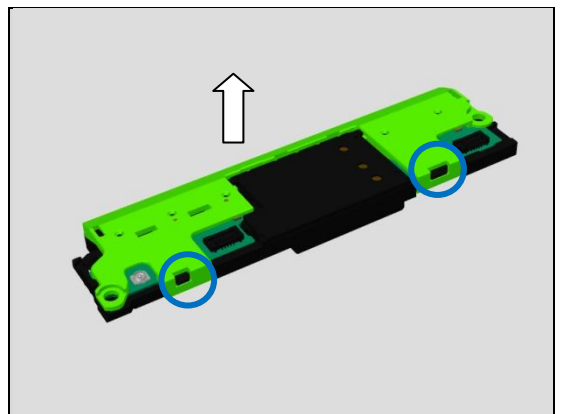
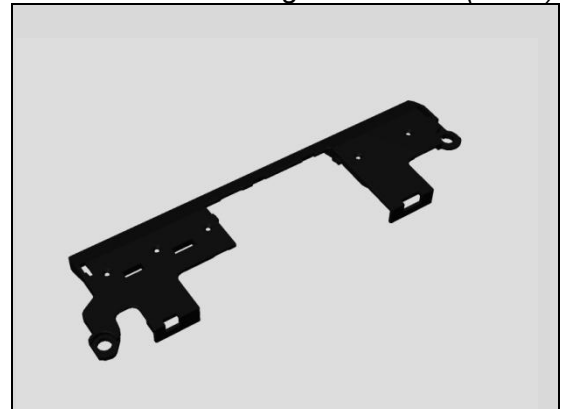
REMOVAL

Open two hooks and remove the Main Antenna from Holder Speaker sub assembly.

INSTALLATION

Assemble the Main Antenna onto Holder Speaker sub assembly.

Press to secure its hooks is properly assembled.



4.13 Holder Speaker sub assembly

Follow the 3.1 – 3.4 Disassembly instructions!

Follow 4.12, 4.14, 4.15, 4.29 Removal instructions.

Prepare the new Holder Speaker sub assembly.

Follow 4.12, 4.14, 4.15, 4.29 Installation instructions.

Follow the 5.3 – 5.6 Reassembly instructions!

Replacement

4.14 Sub PBA-A & Sheet Sub PBA

Follow the 3.1 – 3.4 Disassembly instructions!

Follow 4.12 Removal instructions.

Carry out the Removal as described below.

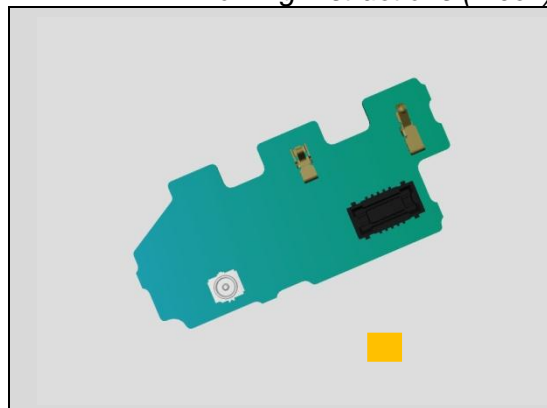
Prepare the new Sub PBA-A and new Sheet Sub PBA.

Carry out the Installation as described below.

Follow 4.12 Installation instructions.

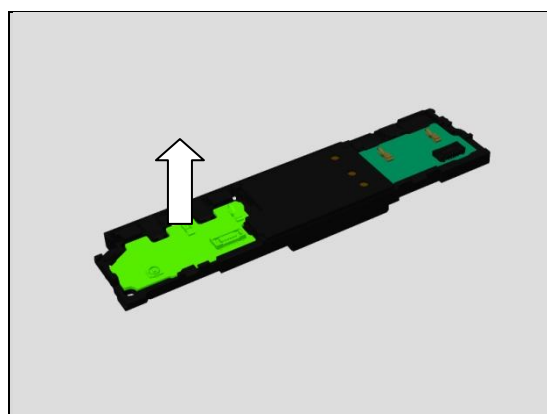
Follow the 5.3 – 5.6 Reassembly instructions!

Working Instructions (mech)



REMOVAL

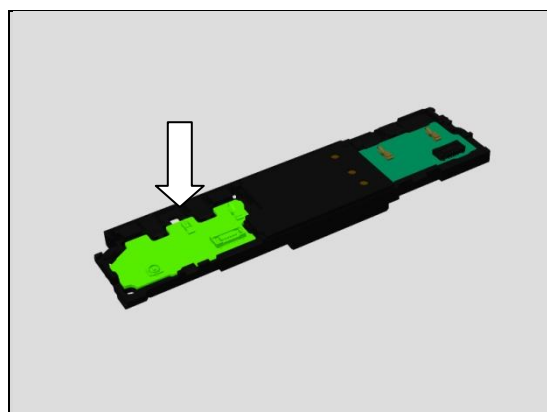
Remove the Sub PBA-A from Holder Speaker sub assembly.



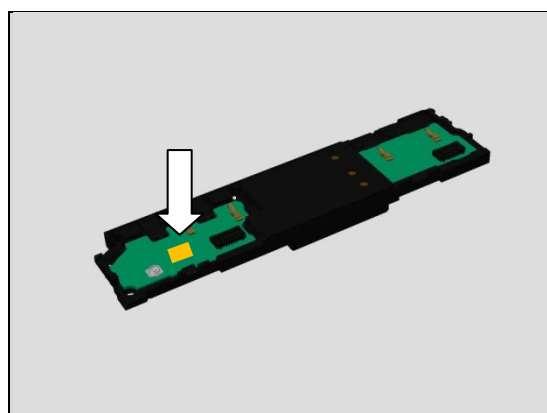
INSTALLATION

Place new Sub PBA-A on Holder Speaker sub assembly.

Press to secure its hooks is properly assembled.



Place new Sheet Sub PBA to cover Sub PBA-A IC.



Replacement

4.15 Sub PBA-B

Follow the 3.1 – 3.4 Disassembly instructions!

Follow 4.12 Removal instructions.

Carry out the Removal as described below.

Prepare the new Sub PBA-B.

Carry out the Installation as described below.

Follow 4.12 Installation instructions.

Follow the 5.3 – 5.6 Reassembly instructions!

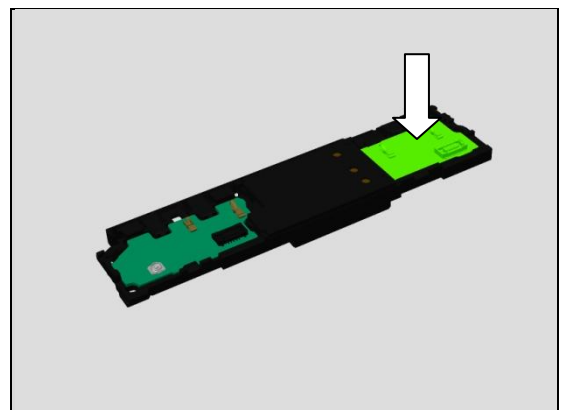
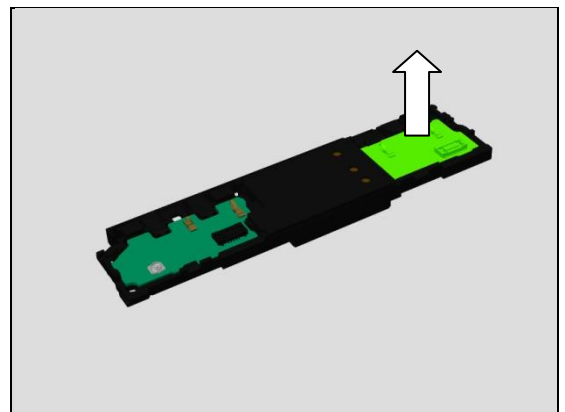
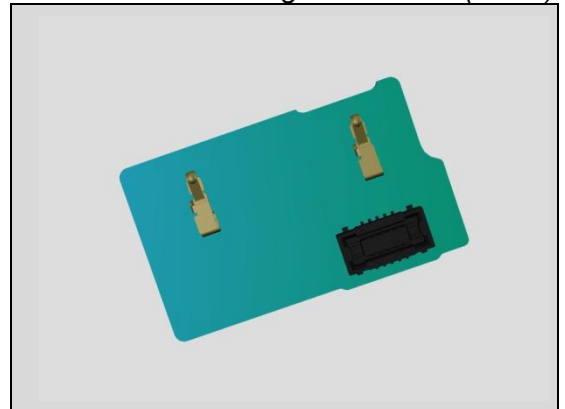
REMOVAL

Remove the Sub PBA-B from Holder Speaker sub assembly.

INSTALLATION

Place new Sub PBA-B on Holder Speaker sub assembly.

Press to secure its hooks is properly assembled.



4.16 Film Display BtB

Follow the 3.1 – 3.4 Disassembly instructions!

Carry out the Removal as described below.

Prepare the new Film Display BtB.

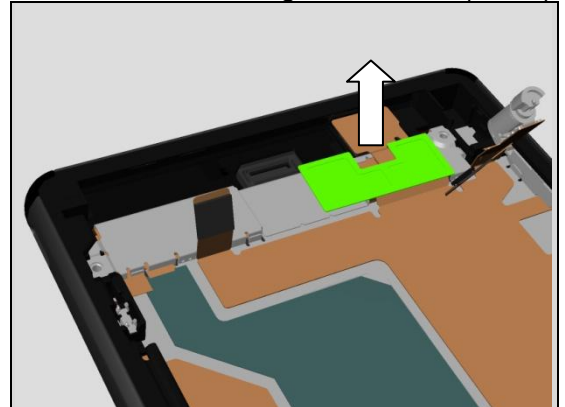
Carry out the Installation as described below.

Follow the 5.3 – 5.6 Reassembly instructions!

Replacement

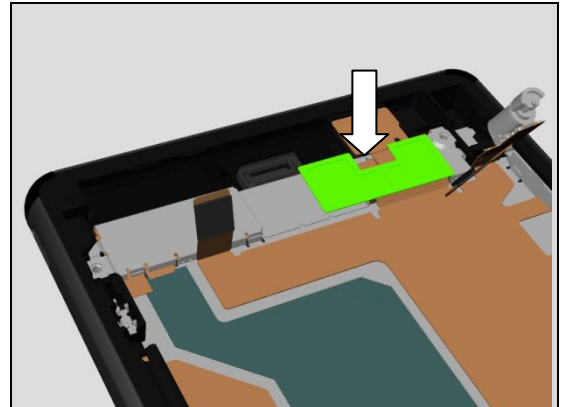
REMOVAL

Remove the *Film Display BtB* from Plate holder speaker.



INSTALLATION

Place new *Film Display BtB* on Plate holder speaker.



4.17 Front Assy

Follow the 3.1 – 3.6 Disassembly instructions!

Follow the 4.16, 4.23, 4.24, 4.25, 4.26, 4.30, 4.33, 4.34, 4.35, 4.38, 4.39, 4.47(L55t only), 4.49, 4.48

Removal instructions!

Carry out the Removal as described below.

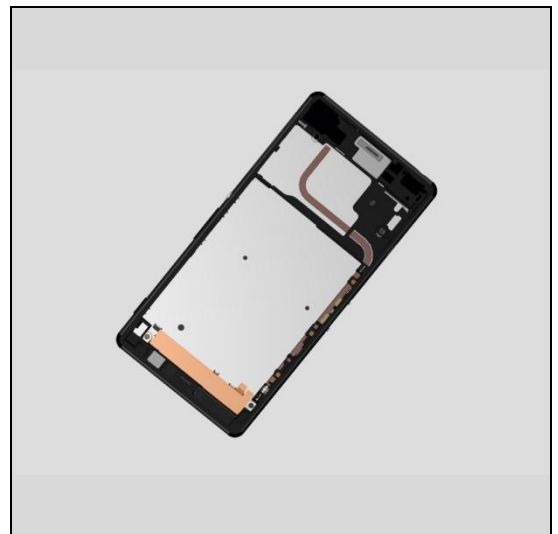
Prepare the new Front Assy.

Carry out the Installation as described below.

Follow the 4.23, 4.24, 4.25, 4.26, 4.30, 4.33, 4.34, 4.35, 4.38, 4.39, 4.47(L55t only), 4.37, 4.41, 4.42, 4.22, 4.16, 4.43, 4.46, 4.21, 4.49, 4.48

Installation instructions!

Follow the 5.1 – 5.6 Reassembly instructions!



Replacement

4.18 Sub Camera & Sheet Chat Camera

Follow the 3.1 – 3.6 Disassembly instructions!
 Carry out the Removal as described below.
 Prepare the new Camera Chat.
 Carry out the Installation as described below.
Follow the 5.1 – 5.6 Reassembly instructions!

REMOVAL

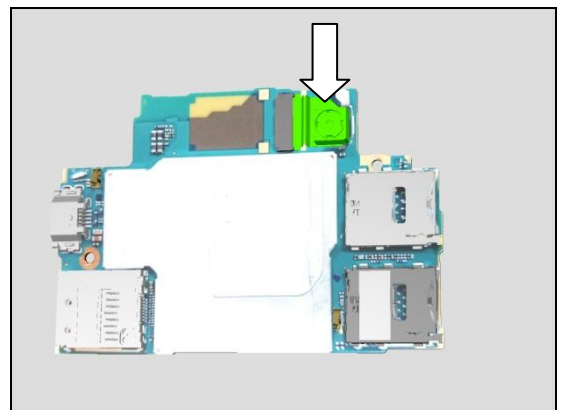
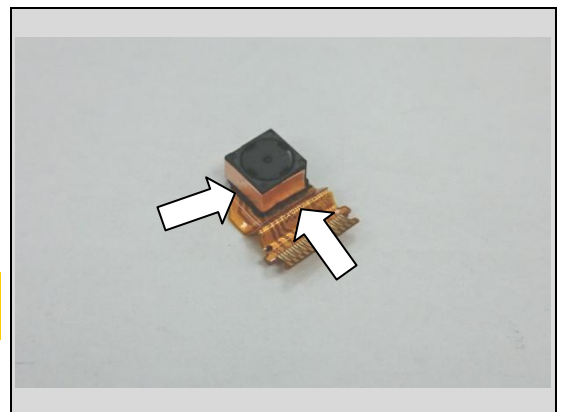
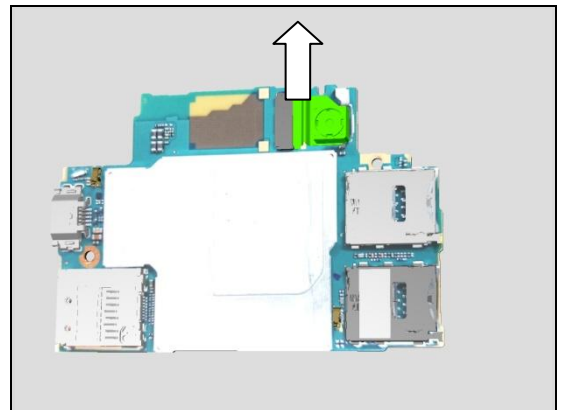
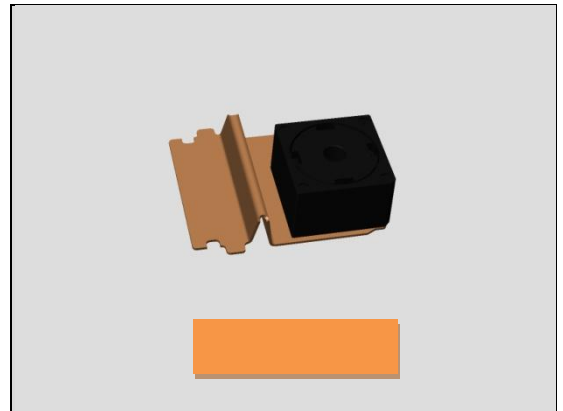
Open the connector and remove the Sub Camera & Sheet Chat Camera.

INSTALLATION

Attach new Sheet Chat Camera on Sub Camera first as shown.

Note: Sheet Chat Camera is attached on two sides of Sub Camera as shown.

Insert ZIF connector first and lock it down.
 Put Sub Camera into its cavity on Main PBA.



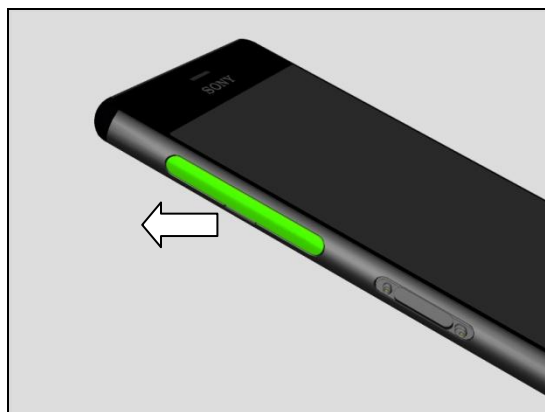
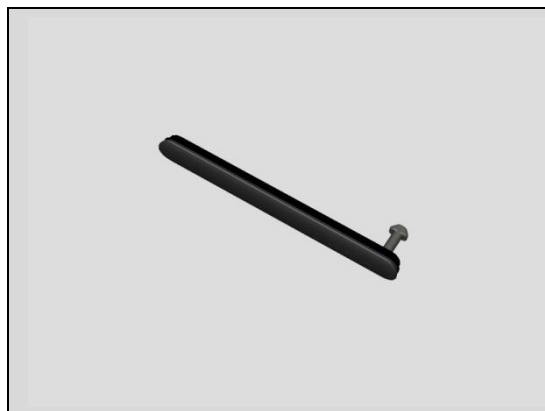
Replacement

4.19 Cap USB

Carry out the Removal as described below.
Prepare the new Cap USB.
Carry out the Installation as described below.

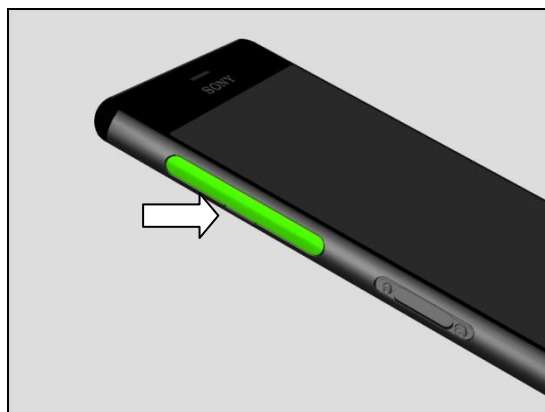
REMOVAL

Remove the Cap USB, Pull its tail out.

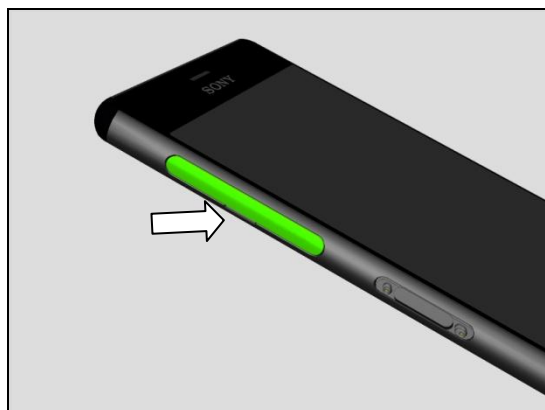


INSTALLATION

Insert the new Cap USB tail first into its hole, and then push it back into phone.



Press to secure its position.



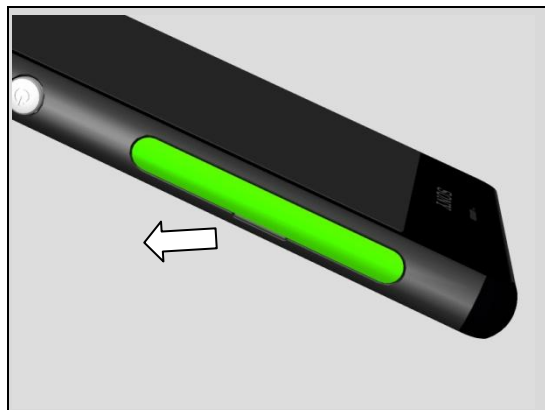
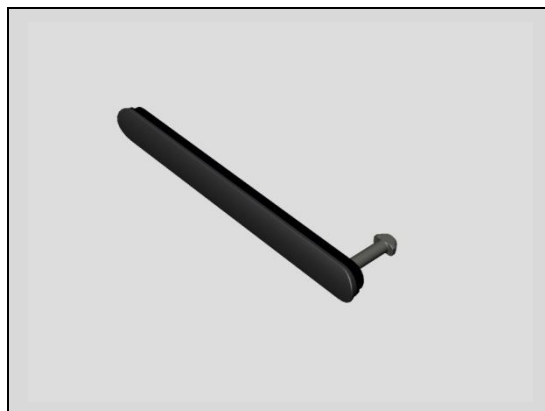
Replacement

4.20 Cap SIM

Carry out the Removal as described below.
Prepare the new Cap SIM.
Carry out the Installation as described below.

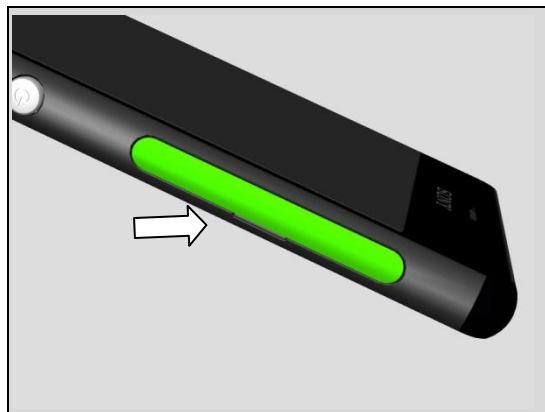
REMOVAL

Remove the Cap USB, Pull its tail out.

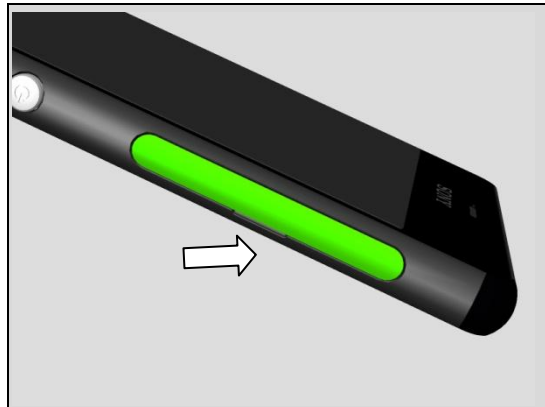


INSTALLATION

Insert the new Cap USB tail first into its hole, then push it back into phone.



Press to secure its position.



Replacement

4.21 Core Unit Label

Carry out the Removal as described below.
Prepare the new Core Unit Label.
Carry out the Installation as described below.

Note: D6633, L55u Core Unit Label includes two piece of White Paper.

L55t Core Unit Label has only one piece of White Paper.

REMOVAL

Read the old Core Unit Label and write the information into the "LabelPrint Solution" program.

Open the Cap SIM and pull out the Label Tray using Dentist Hook.

Remove the Core Unit Label.

Scrap Core Unit Label, not to be reused.

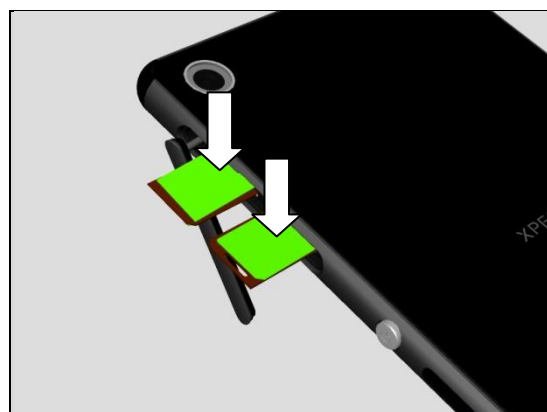
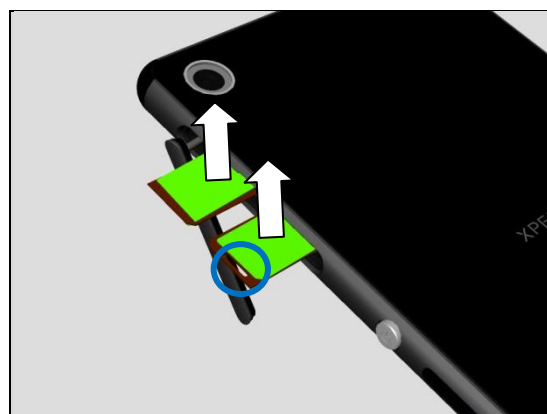
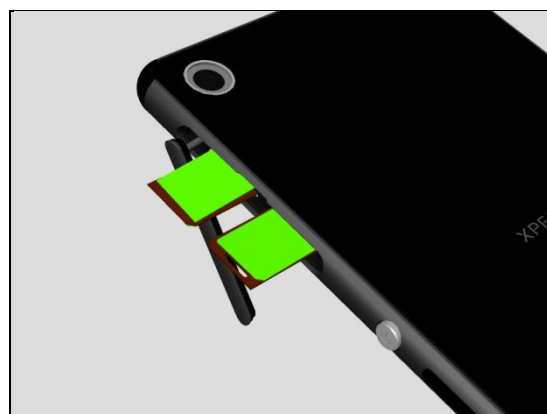
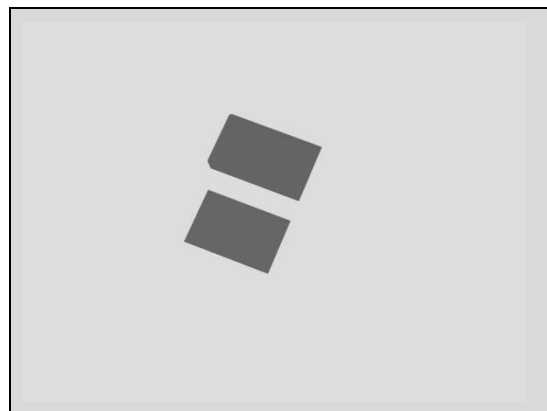
Remove and clean any remaining adhesive residue found on Label Tray.

INSTALLATION

Check that the proper label format is loaded in the Zebra printer and write a new Label by using the 'Label Print' software.

Place and align a new Core Unit Label in the correct position. Press with a finger to secure the attachment.

One label only is allowed.



Replacement

4.22 Gore Sheet(1st mic)

Follow the 3.1 – 3.4 Disassembly instructions!

Carry out the Removal as described below.

Prepare the new Gore Sheet(1st mic).

Carry out the Installation as described below.

Follow the 5.3 – 5.6 Reassembly instructions!

REMOVAL

Turn over the Main MIC FPC from its cavity first.

Remove the Gore Sheet(1st mic) from Front Assy.

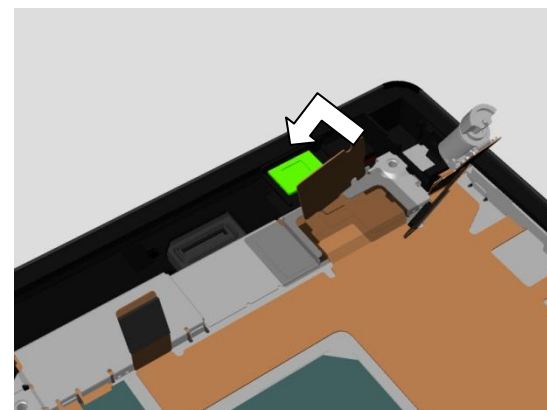
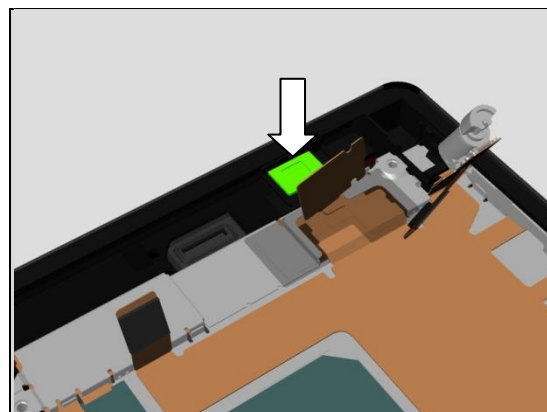
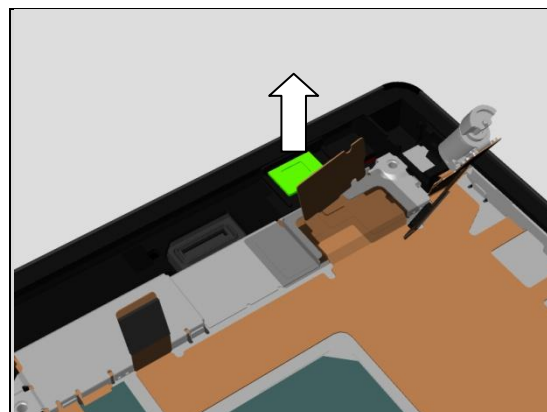
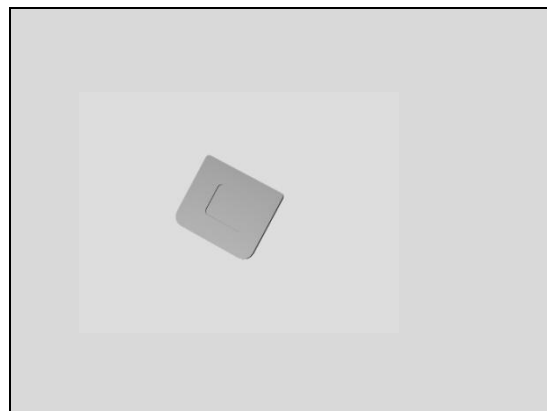
Clean the surplus adhesive on Holder Mic sub assembly.

INSTALLATION

Place New Gore Sheet(1st mic) in its cavity on Front Assy.

Turn over the Main MIC FPC back and assemble it into its cavity.

Press to secure its attachment.



Replacement

4.23 Loudspeaker B & Grill Receiver Black

Follow the 3.1 – 3.6 Disassembly instructions!

Follow 4.38 Removal Instructions.

Carry out the Removal as described below.

Prepare the new Loudspeaker B and Grill Receiver Black.

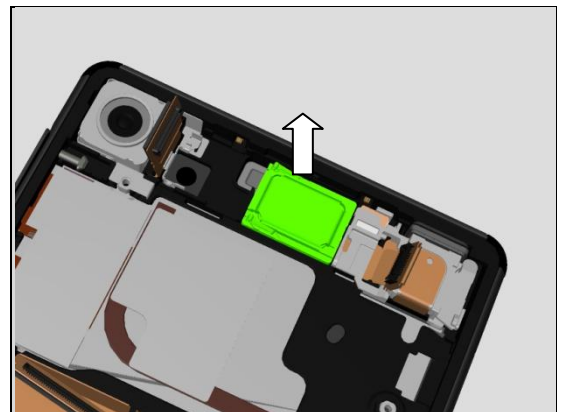
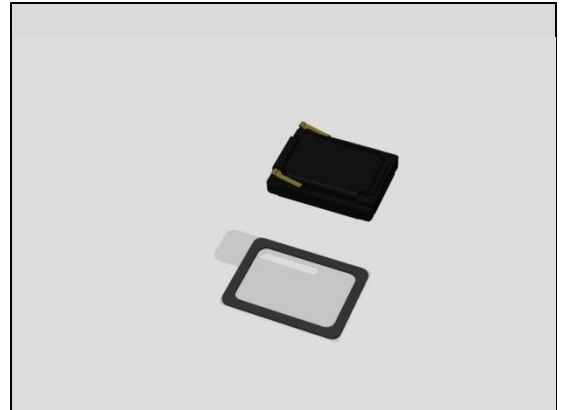
Carry out the Installation as described below.

Follow 4.38 Installation Instructions.

Follow the 5.1 – 5.6 Reassembly instructions!

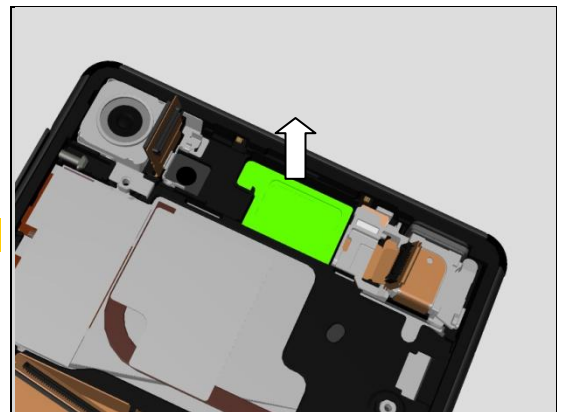
REMOVAL

Remove the Loudspeaker B from its cavity.



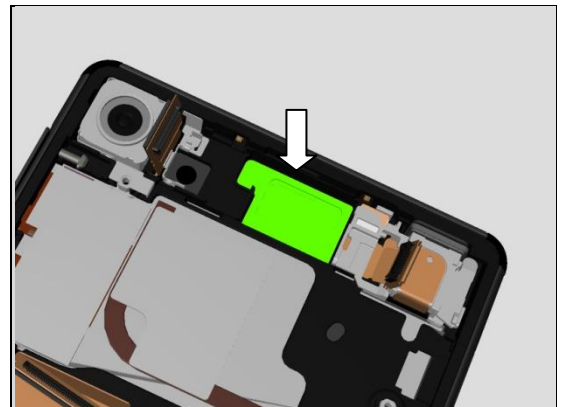
Remove the old Grill Receiver Black from its cavity.

Scrap! Not to be reused!



INSTALLATION

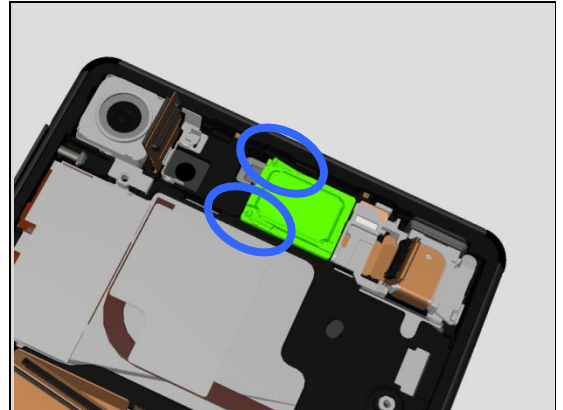
Place new Grill Receiver Black into its cavity.



Replacement:

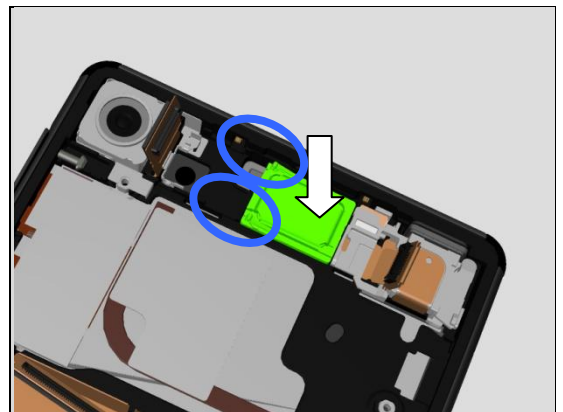
Place the new Loudspeaker B into its cavity as shown in the picture.

Do not touch the pins of the Loudspeaker B!



Press the Loudspeaker B to secure the attachment.

Do not touch the pins of the Loudspeaker B!



Replacement

4.24 Audio Jack & Cushion Audio Jack FPC BtB

Follow the 3.1 – 3.6 Disassembly instructions!

Carry out the Removal as described below.

Prepare the new Audio Jack and new Cushion Audio Jack FPC BtB.

Carry out the Installation as described below.

Follow the 5.1 – 5.6 Reassembly instructions!

Note: New Audio Jack already has Adhesive WP Audio Jack.

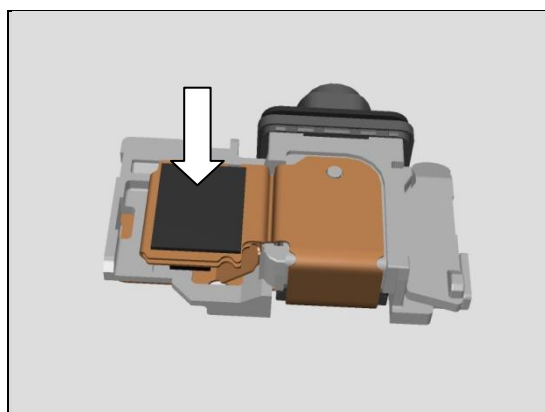
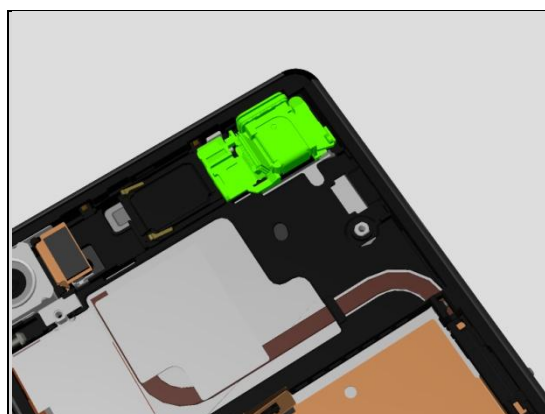
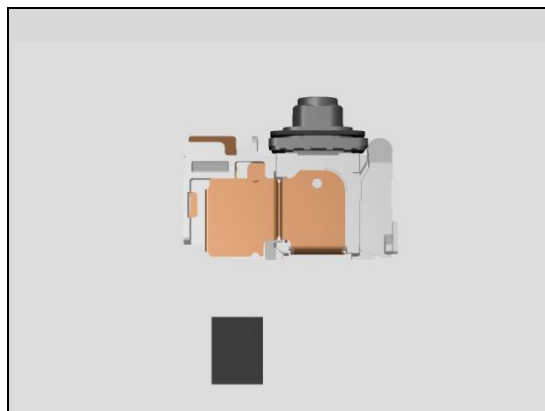
REMOVAL

Remove the Audio Jack and Cushion Audio Jack FPC BtB gently from its cavity.

Clean the old Adhesive and all remaining of the Adhesive residue found in the cavity.

INSTALLATION

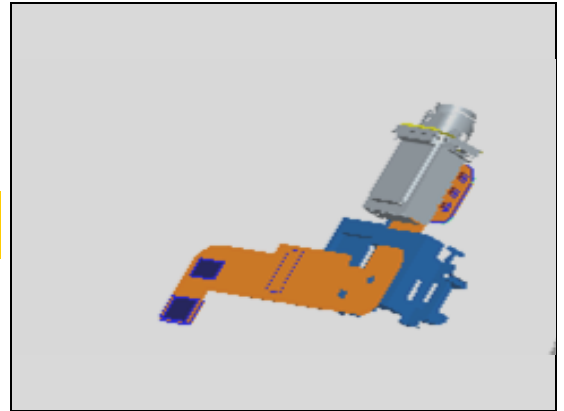
Place new Cushion Audio Jack FPC BtB on Audio Jack FPC BtB connector gently.



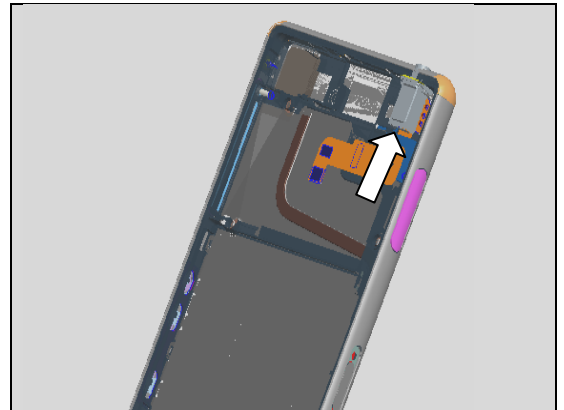
Replacement:

Prepare the new Audio Jack.

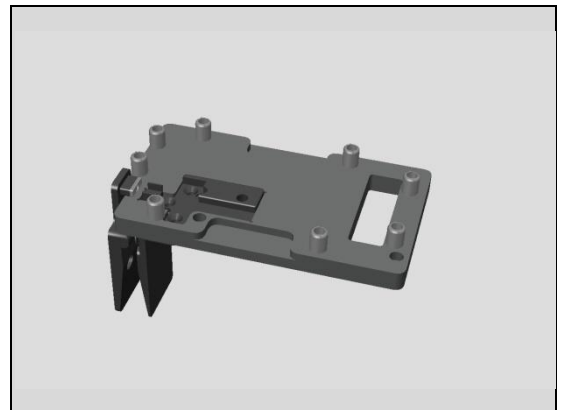
Note: New Audio Jack already has Adhesive WP Audio Jack.



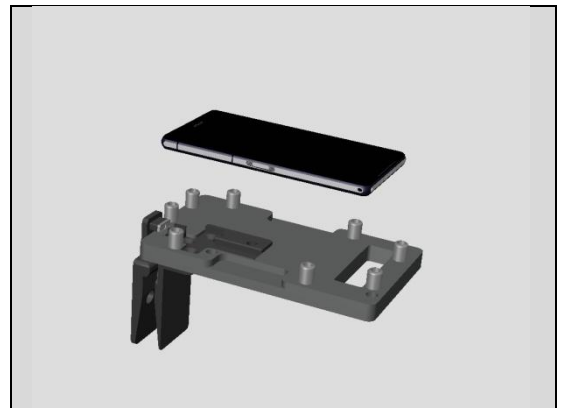
Assemble Audio Jack into its Cavity on Front Assy.



Use the Audio Jack Press fixture to press Audio Jack.

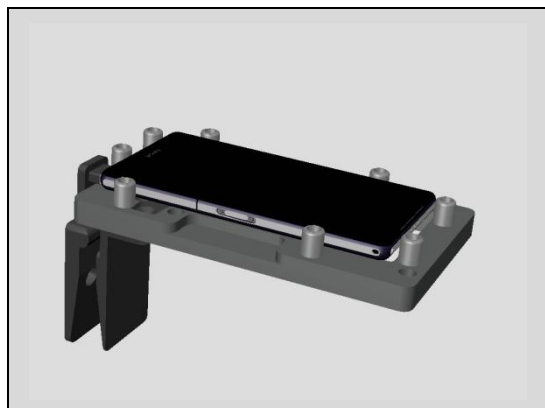


Place the unit in the fixture.

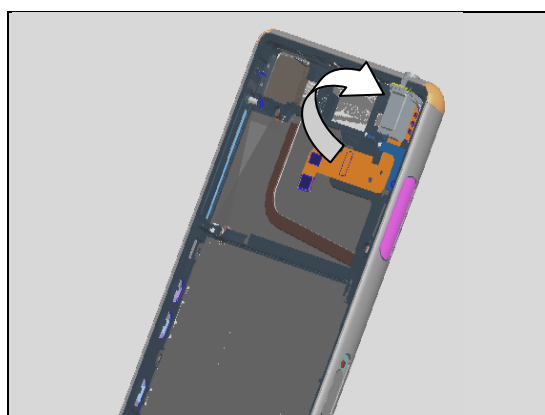


Replacement:

Press for ten seconds with the Audio Jack Press to secure the attachment.



Bend 2nd MIC FPC area back on Audio Jack as shown.



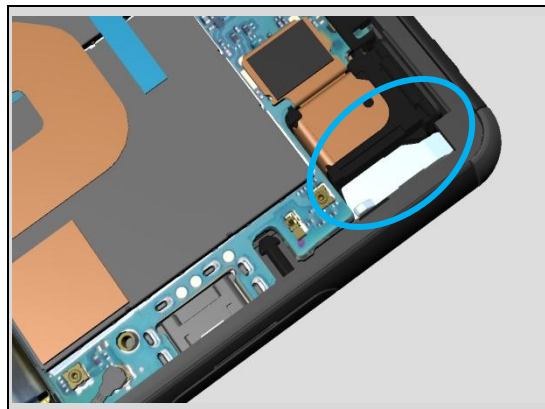
Assemble 2nd MIC FPC area on Audio Jack at its correct position.

Note: Check front camera and Proximity/Light Sensor position from Phone front side.



Note:

1. For White color phone, replace the Lightguide 3 LED on Audio Jack according to Chapter 4.45 replacements.
2. For Black and Copper phone, the current Lightguide 3 LED on Audio Jack is ok, no need to replace.



Replacement

4.25 Charge FPC & Adhesive Charge FPC

Follow the 3.1 – 3.2 Disassembly instructions!

Carry out the Removal as described below.

Prepare the new Charge FPC & Adhesive Charge FPC.

Carry out the Installation as described below.

Follow 4.31 Installation instructions.

Follow the 5.5 – 5.6 Reassembly instructions!

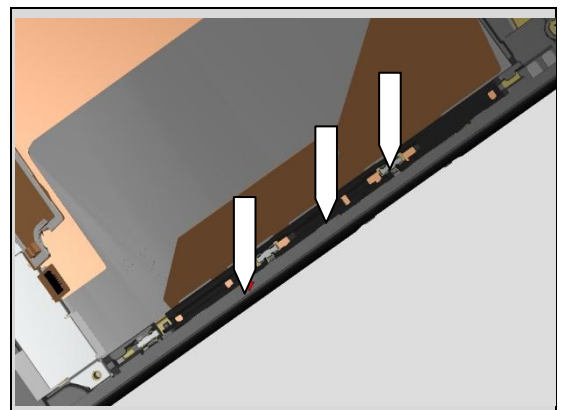
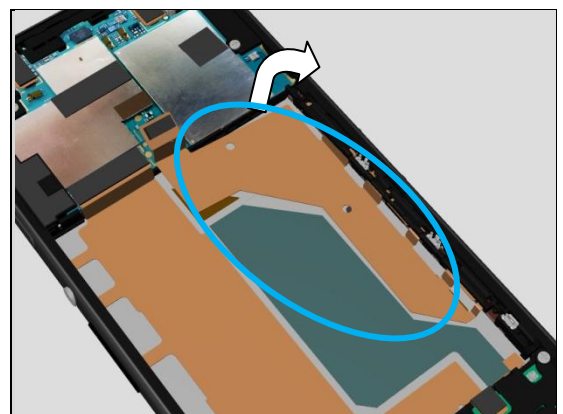
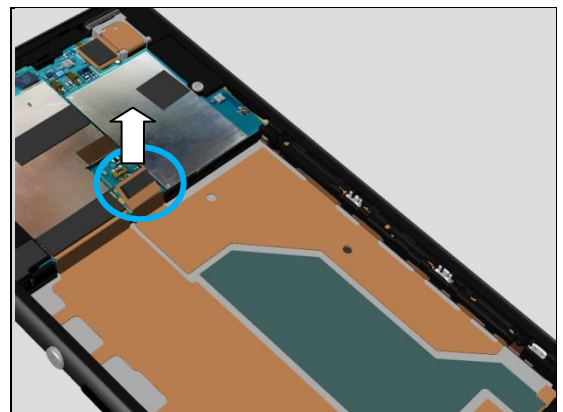
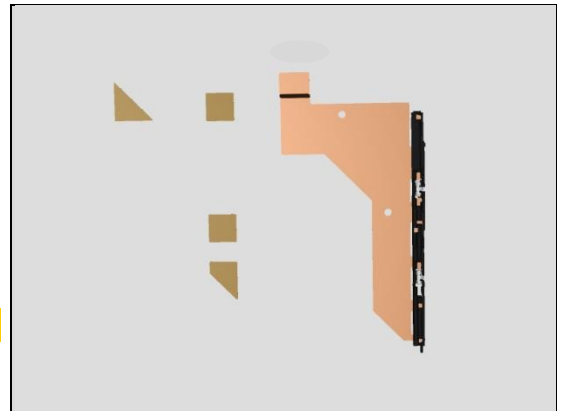
Visual Inspektion of the Charge FPC.

REMOVAL

Unsnap the BtB connector of Charge FPC.

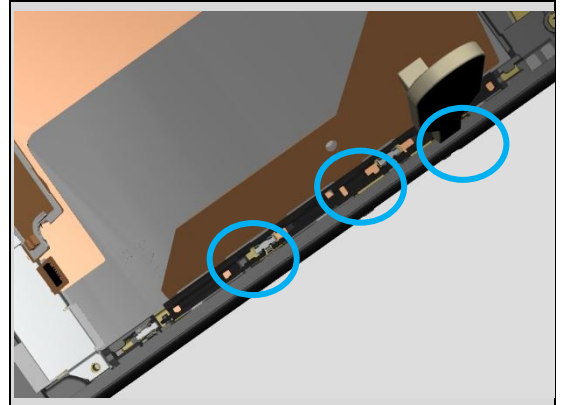
Lift the Charge FPC up to release the adhesive.

There are three hooks for Charger FPC.



Replacement

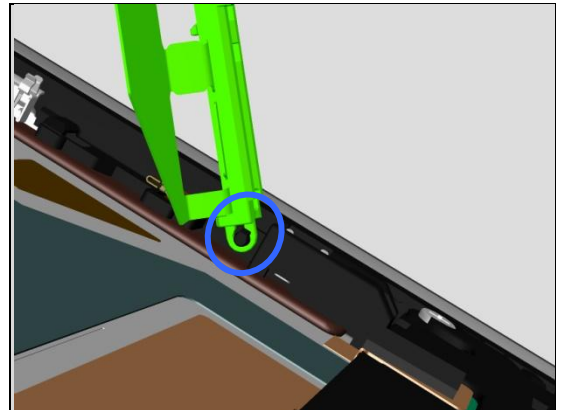
Detach the Charge FPC from Front Assy using Front Opening Tool.



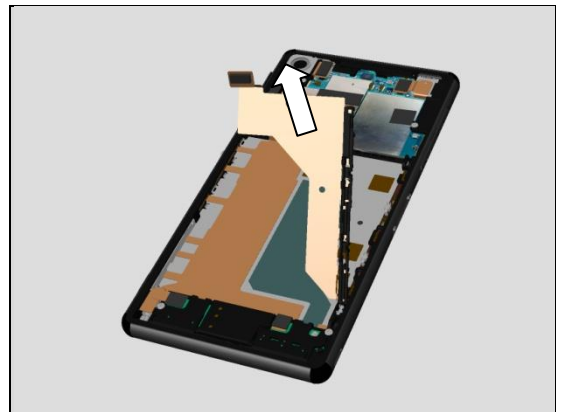
Lift up the Charge FPC vertically as shown.



Note: there is a guide pillar on Front Assy.

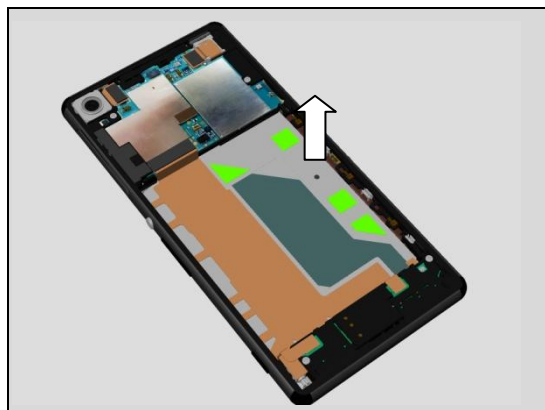


Release the guide pillar and Remove the Charge FPC from Front Assy.



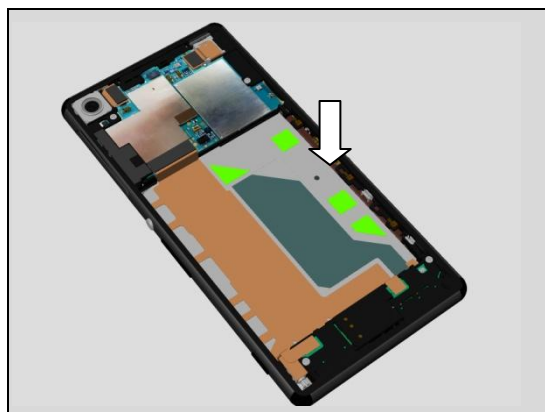
Replacement:

Clean the surplus Adhesive Charge FPC from Front Assy.

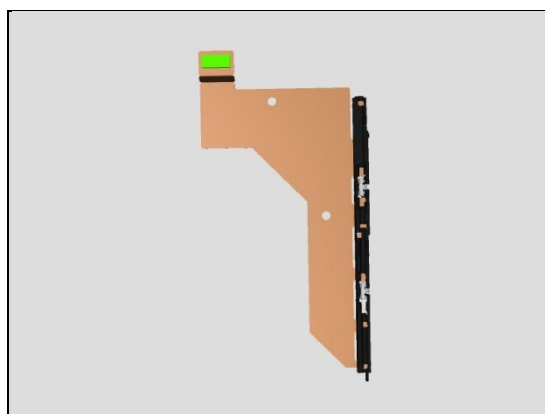


INSTALLATION

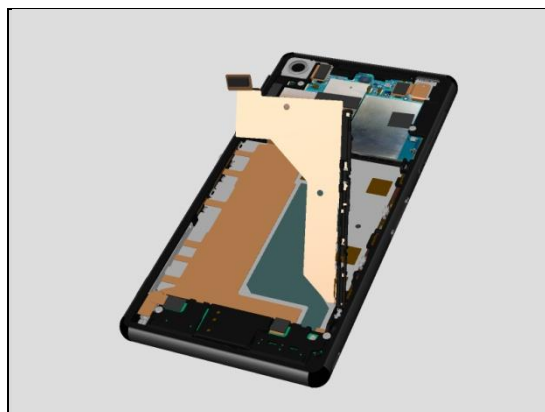
Place new Adhesive Charge FPC on Front Assy.



Place new Cushion Battery FPC BtB on the BtB connector of new Charger FPC.

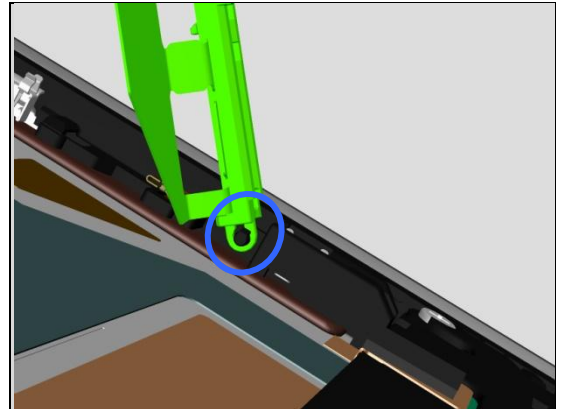


Place new Charge FPC onto Front Assy.

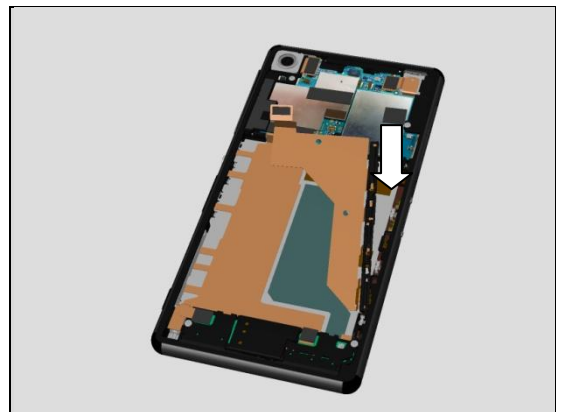


Replacement:

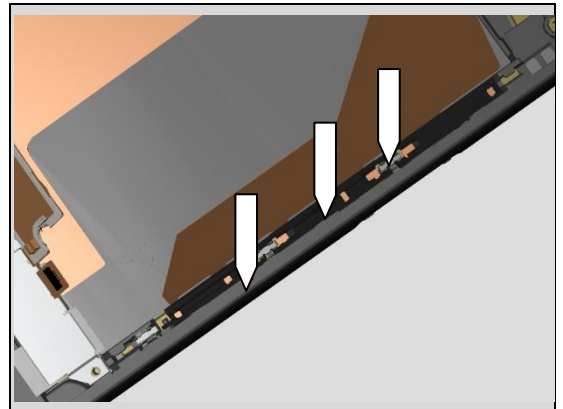
Assemble the guide pillar first as shown.



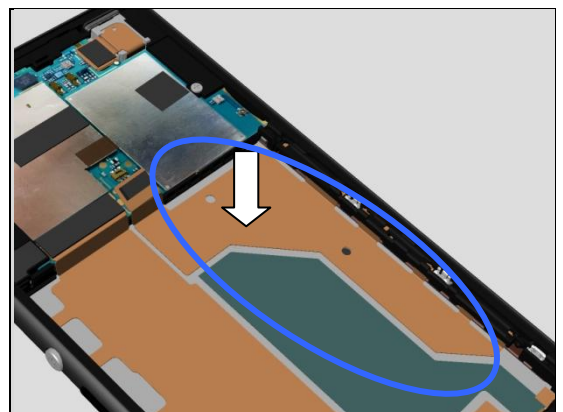
Put down Charger FPC on Front Assy.



Press this side area to ensure its hooks is properly assembled.

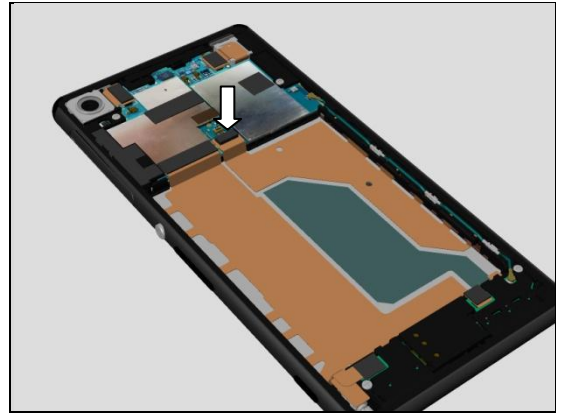


Press the Charge FPC area to secure its attachment.



Replacement:

Connect the BtB connector on Main PBA.



Replacement

4.26 Relay FPC PBA & Adhesive Relay FPC A & Adhesive Relay FPC B

Follow the 3.1 – 3.4 Disassembly instructions!

Follow the 4.16, 4.39, 4.22 Removal instructions!

Carry out the Removal as described below.

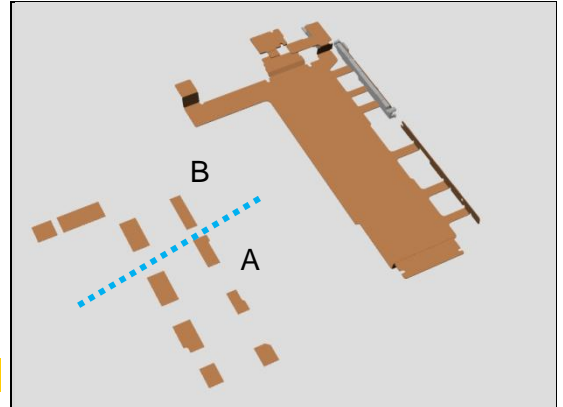
Prepare the new Relay FPC PBA, Adhesive Relay FPC A and Adhesive Relay FPC B.

Carry out the Installation as described below.

Follow the 4.16, 4.39, 4.27, 4.22, 4.28 Installation instructions!

Follow the 5.3 – 5.6 Reassembly instructions!

Visual Inspection of the Relay FPC.

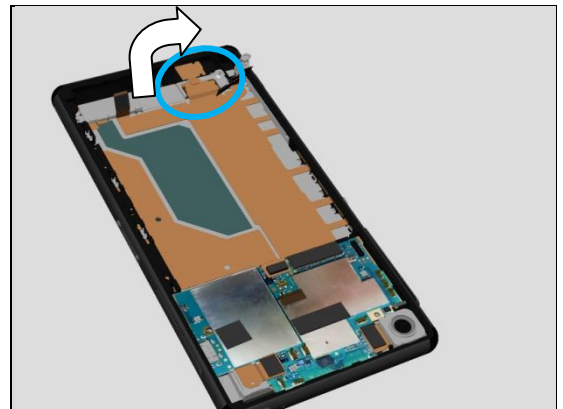


REMOVAL

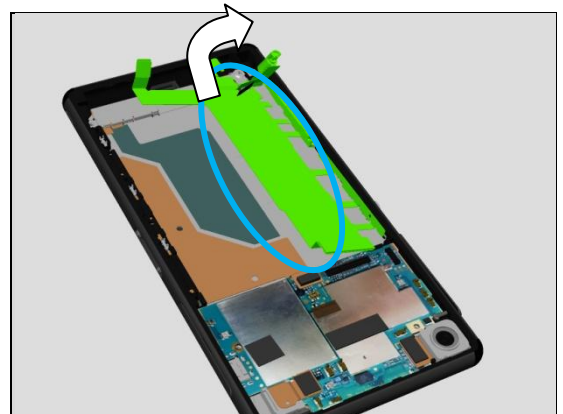
Unsnap the BtB between the Relay FPC PBA and Main PBA.



Disassemble the main MIC FPC area from Front Assy.
Unsnap the BtB between the Relay FPC PBA and LCM FPC.

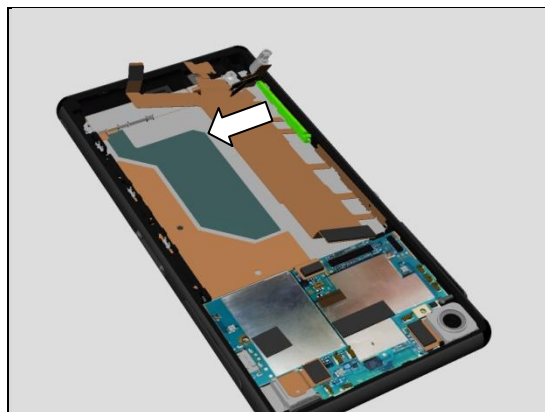


Disassemble the FPC area from Front Assy.

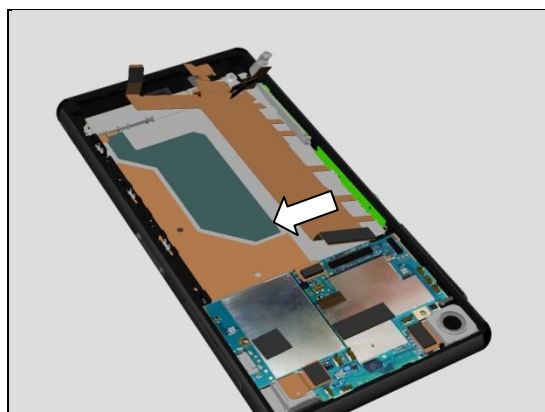


Replacement:

Release the camera key holder area from Front Assy.

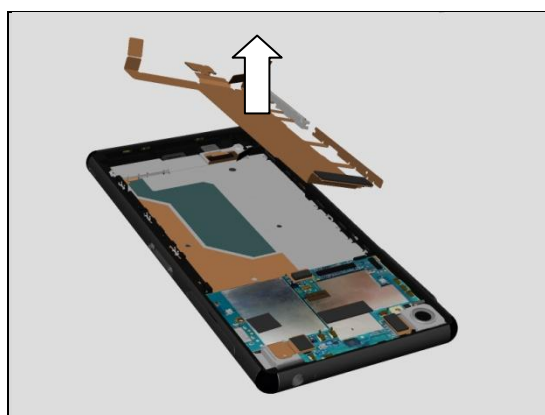


Release the volume/power key FPC area from Front Assy.



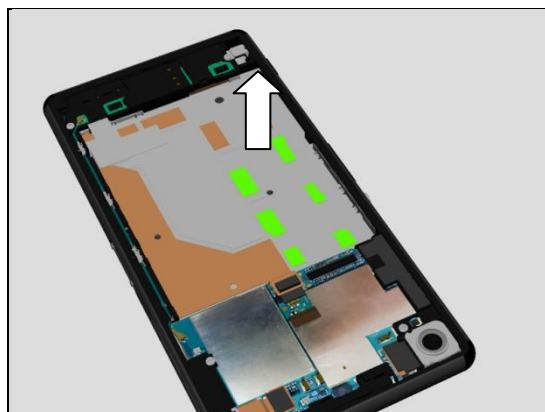
Remove the Relay FPC PBA From Front Assy.

Note: if the Relay FPC PBA is damaged, Do not reuse it then, scrap.



Clean the Adhesive Relay FPC A from Front Assy.

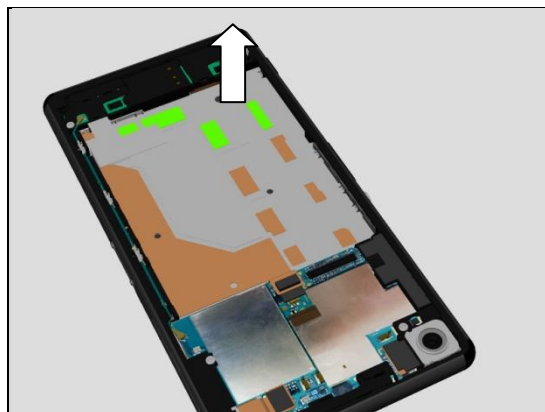
Scrap! Cannot be reused.



Replacement:

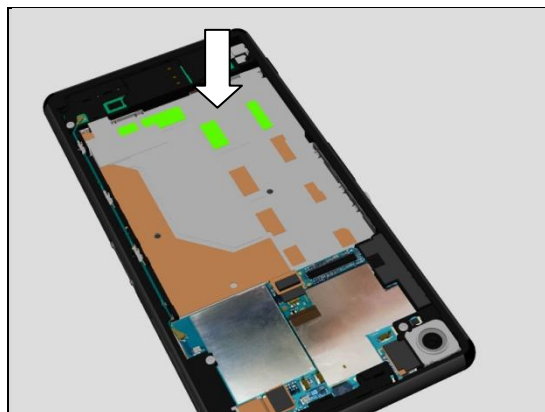
Clean the Adhesive Relay FPC B from Front Assy.

Scrap! Cannot be reused.

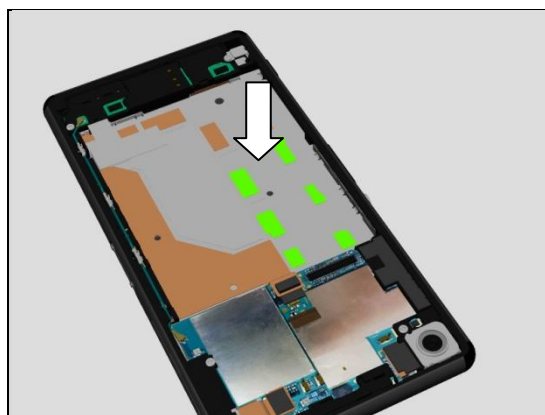


INSTALLATION

Place a new Adhesive Relay FPC B on Front Assy



Place a new Adhesive Relay FPC A on Front Assy

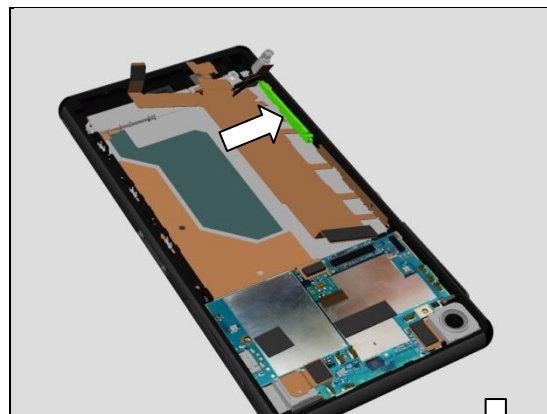


Prepare new Relay FPC PBA on Front Assy.

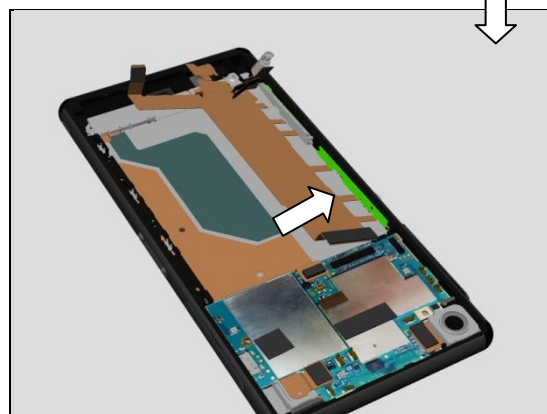


Replacement:

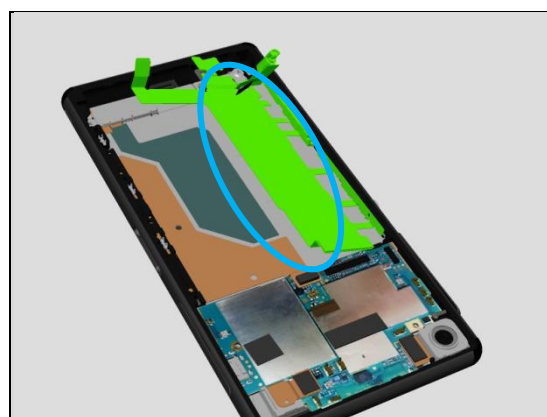
Assemble the *camera key holder area on Front Assy first.*



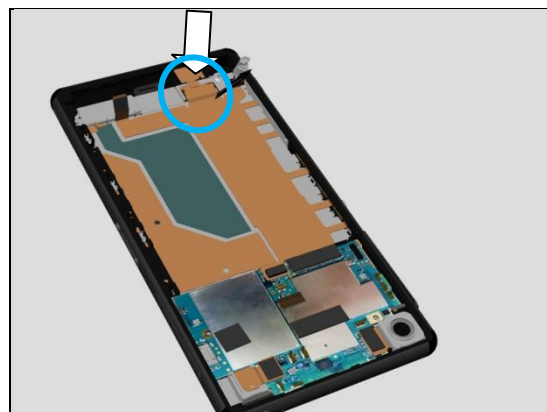
Assemble the volume/power key FPC area on Front Assy.



Put down the FPC area on Front Assy.
Press to secure its attachment.



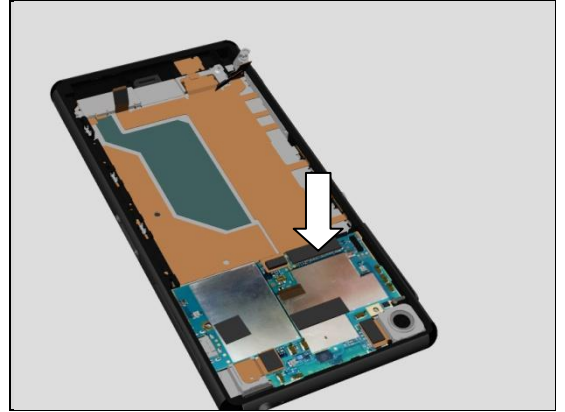
Assemble the main MIC FPC area on Front Assy.
Connect the BtB between the Relay FPC PBA and LCM FPC.



Note: Must new Gore Sheet(1st mic) on Front Assy and new Holder Mic sub assembly on Relay FPC PBA.

Replacement:

Connect the BtB connector between the Relay FPC PBA and Main PBA.



Replacement

4.27 Holder Mic sub assembly

Follow the 3.1 – 3.4 Disassembly instructions!
 Carry out the Removal as described below.
 Prepare the new Holder Mic sub assembly.
 Carry out the Installation as described below.
Follow the 5.3 – 5.6 Reassembly instructions!

REMOVAL

Disassemble the main MIC FPC area from Front Assy.
 Unsnap the BtB between the Relay FPC PBA and LCM FPC.

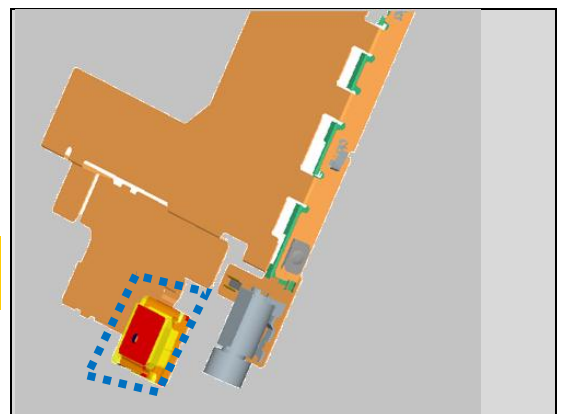
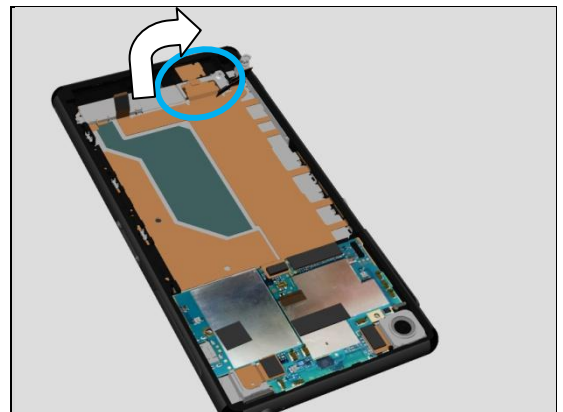
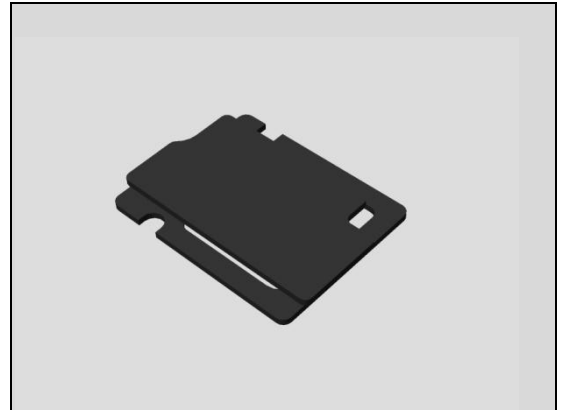
Remove the Holder Mic sub assembly gently from Relay FPC PBA.

Scrap! Cannot be reused.
Do not damage the Relay FPC PBA.

INSTALLATION

Place new Holder Mic sub assembly on main MIC.
 Press to secure its attachment.

Do not damage the Relay FPC PBA.

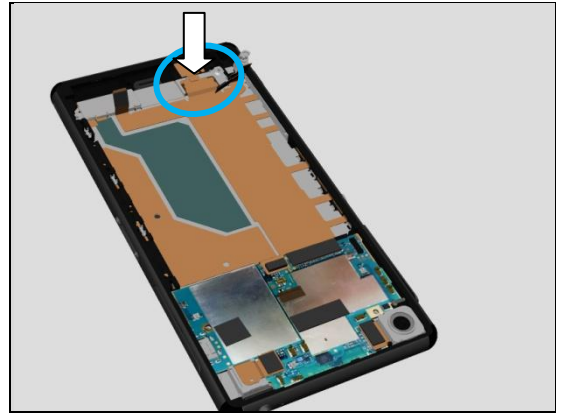


Replacement

Connect the BtB between the Relay FPC PBA and LCM FPC.

Assemble the main MIC FPC area on Front Assy.

Press to secure its attachment,



Replacement

4.28 Cushion Relay FPC BtB & Cushion Relay FPC bottom BtB & Cushion 10pin BB speaker

Follow the 3.1 Disassembly instructions!

Carry out the Removal as described below.

Prepare the new Cushion Relay FPC BtB(a), Cushion Relay FPC bottom BtB(b) and Cushion 10pin BB speaker(c.).

Carry out the Installation as described below.

Follow the 5.6 Reassembly instructions!

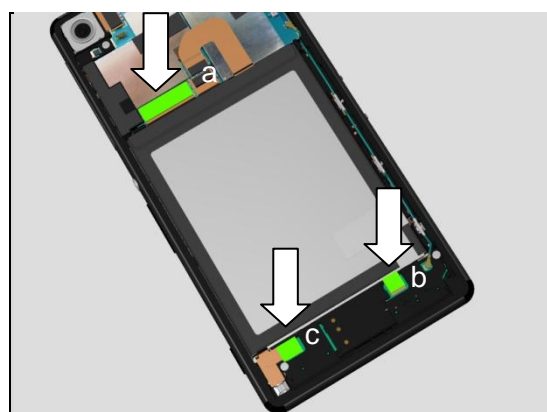
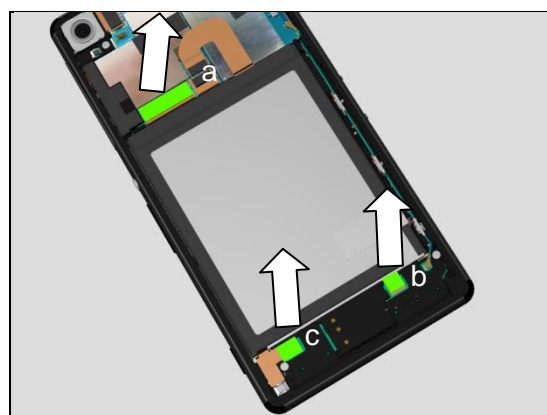
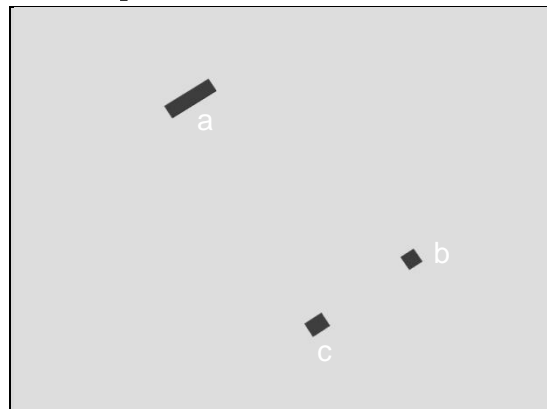
REMOVAL

Remove the Cushion Relay FPC BtB(a), Cushion Relay FPC bottom BtB(b) and Cushion 10pin BB speaker(c.) from Relay FPC PBA.

Scrap! Cannot be reused.

INSTALLATION

Assemble new Cushion Relay FPC BtB(a), Cushion Relay FPC bottom BtB(b) and Cushion 10pin BB speaker(c) onto Relay FPC PBA at its correct BtB connector.



Replacement

4.29 Cushion MIC

Follow the 3.1 – 3.4 Disassembly instructions!

Carry out the Removal as described below.

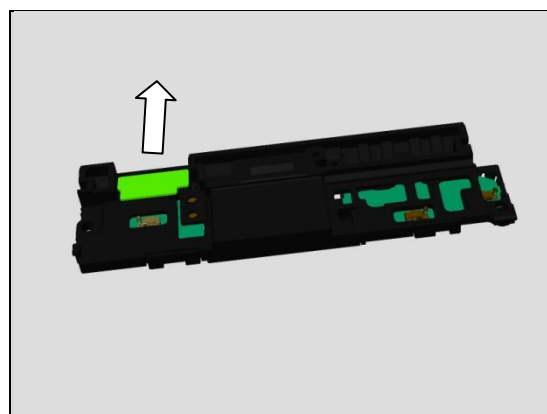
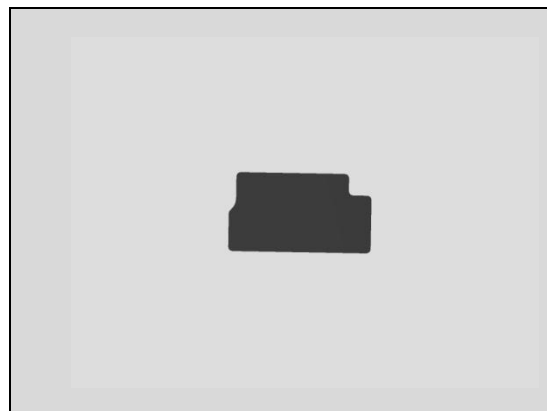
Prepare the new Cushion MIC.

Carry out the Installation as described below.

Follow the 5.3 – 5.6 Reassembly instructions!

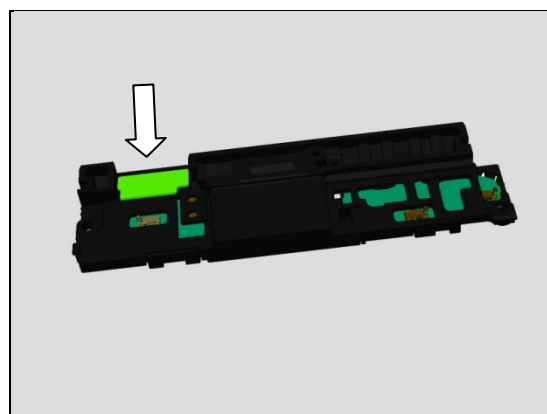
REMOVAL

Remove the Cushion MIC from Holder Speaker sub assembly.



INSTALLATION

Place new Cushion MIC on Holder Speaker sub assembly.



Replacement

4.30 Plate holder speaker

Follow the 3.1 – 3.4 Disassembly instructions!

Carry out the Removal as described below.

Prepare the new Plate Speaker.

Carry out the Installation as described below.

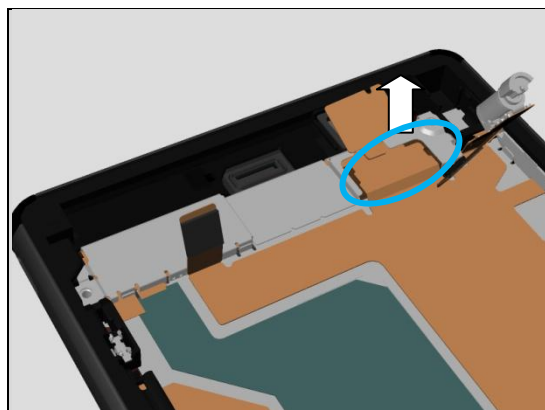
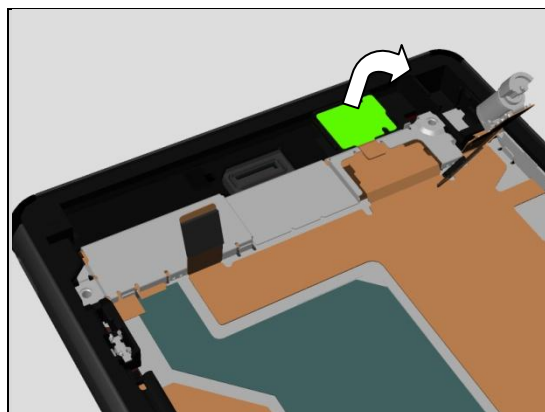
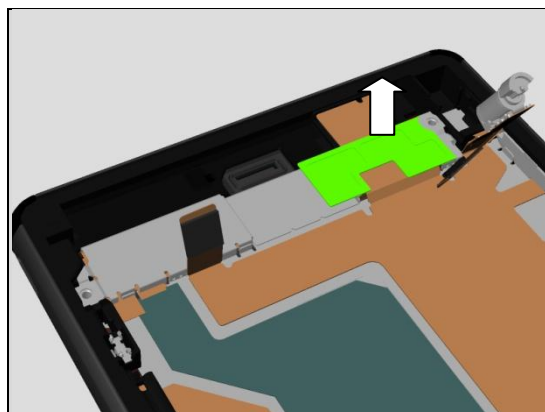
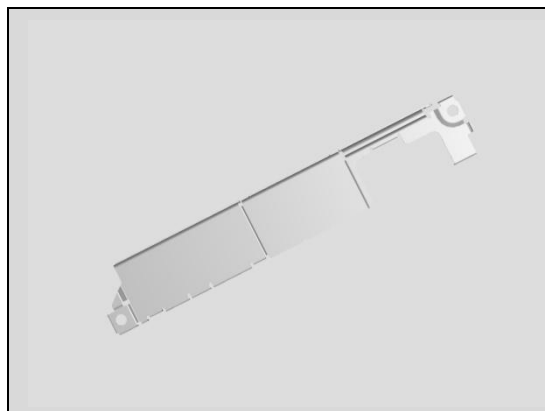
Follow the 5.3 – 5.6 Reassembly instructions!

REMOVAL

Release the Film Display BtB.

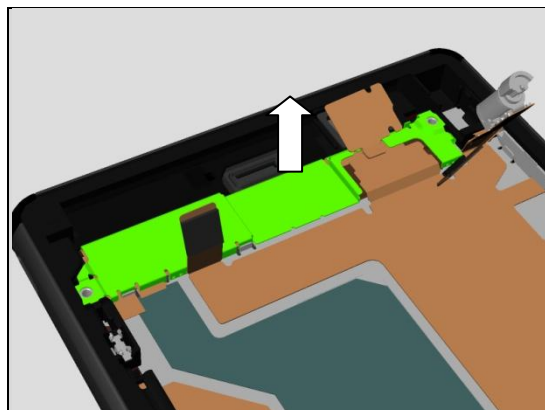
Disassemble the main MIC area from Front Assy.

Open the BtB connector.

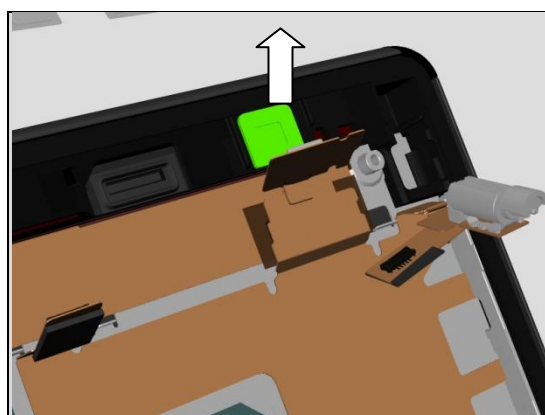


Replacement:

Remove the Plate holder speaker.

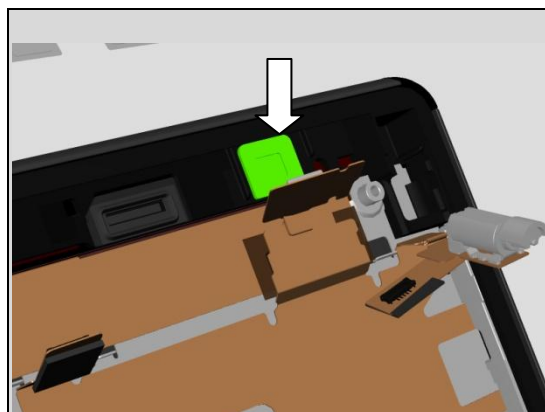


Remove the Gore Sheet(1st mic) from Front Assy.
Remove the surplus adhesive from Holder Mic sub assembly also.

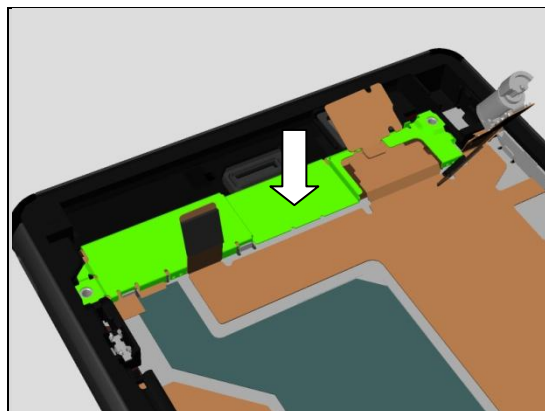


INSTALLATION

Place new Gore Sheet(1st mic) at its cavity.

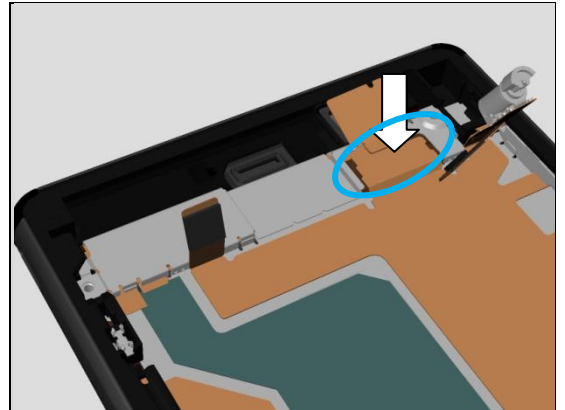


Assemble the Plate holder speaker at its position.

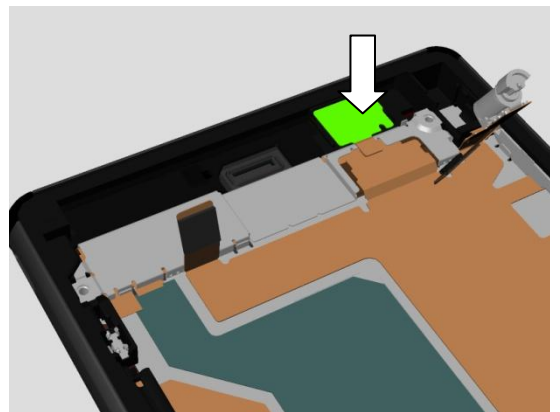


Replacement:

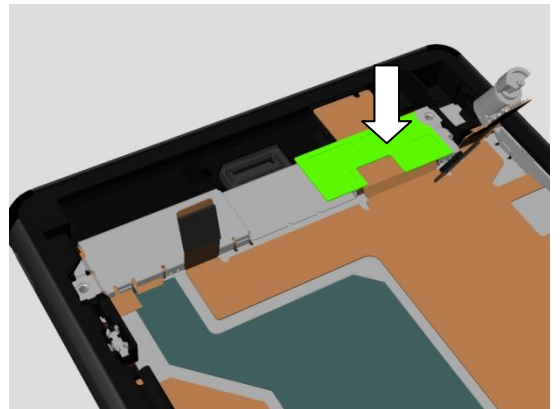
Connect the BtB connector.



Assemble the Main MIC area onto its cavity.
Press to secure its attachment.



Assemble the new Film Display BtB on Plate holder
speaker.



Replacement

4.31 Cushion Battery FPC BtB

Follow the 3.1 Disassembly instructions!

Prepare the new Cushion Battery FPC BtB

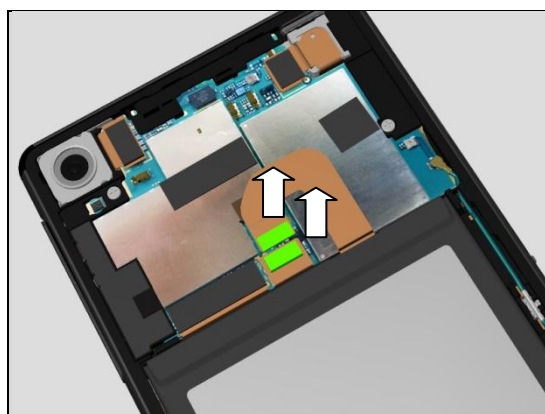
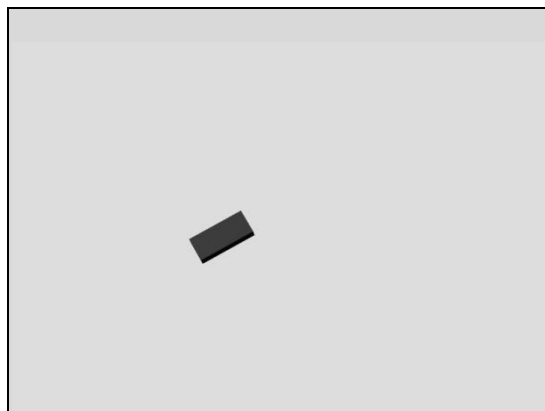
Carry out the Installation as described below.

Follow the 5.6 Reassembly instructions!

REMOVAL

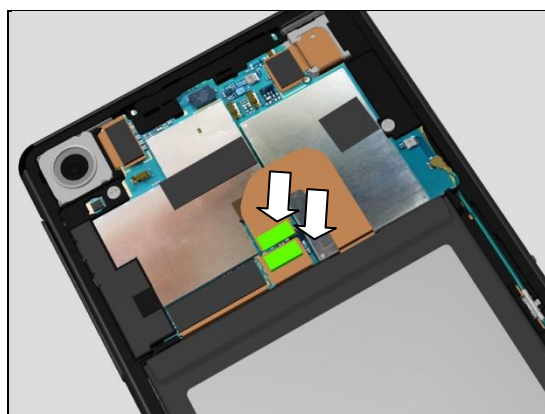
Remove the Cushion Battery FPC BtB(2 pcs).

Scrap! Cannot be reused.



INSTALLATION

Prepare the new Cushion Battery FPC BtB(2pcs) at their correct BtB connectors.



Replacement

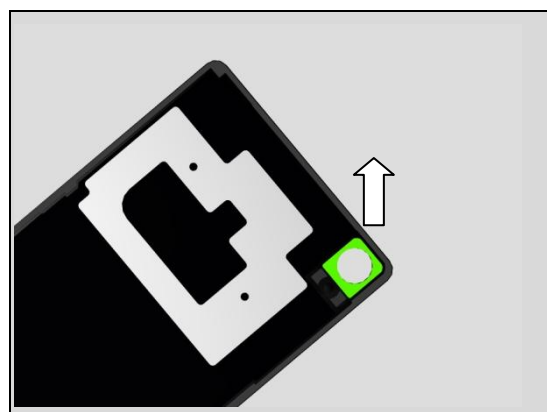
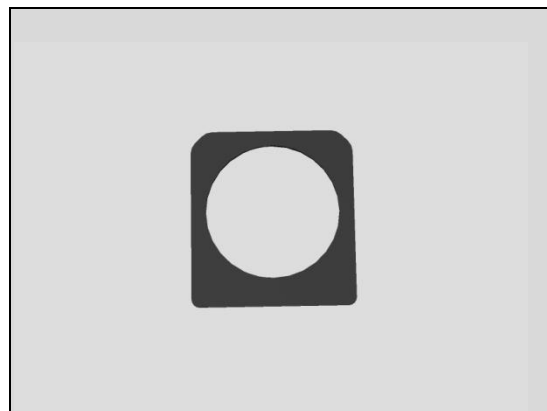
4.32 Cushion Rear Panel

Follow the 3.1 Disassembly instructions!
 Carry out the Removal as described below.
 Prepare the new Cushion Rear Panel.
 Carry out the Installation as described below.
Follow the 5.6 Reassembly instructions!

REMOVAL

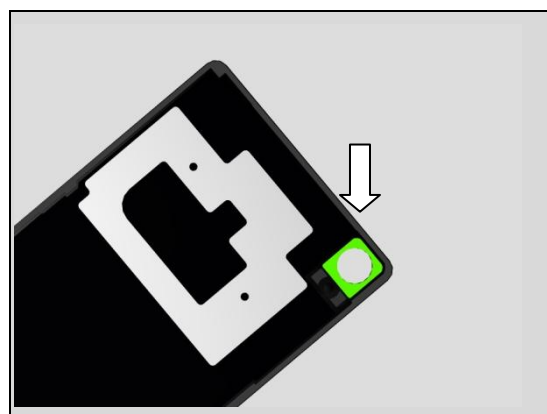
Remove the Cushion Rear Panel from Rear Panel.

Scrap! Cannot be reused.



INSTALLATION

Assemble the new Cushion Rear Panel on Rear Panel.



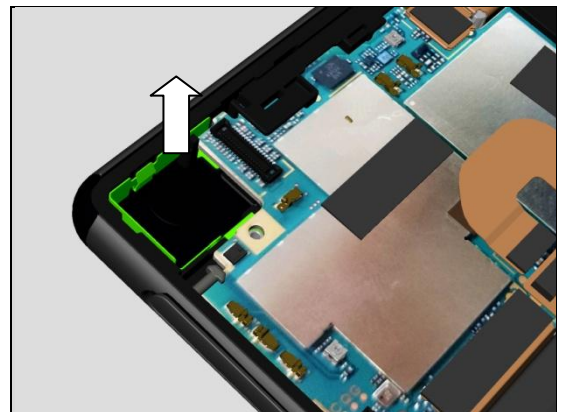
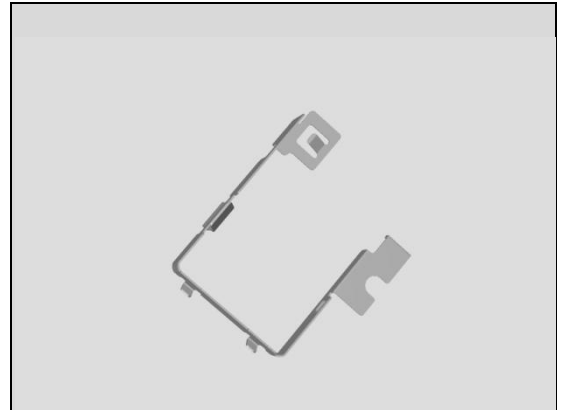
Replacement

4.33 Shield Main Camera

Follow the 3.1 Disassembly instructions!
Follow 4.34 Removal Instructions.
 Carry out the Removal as described below.
 Prepare the new Shield Main Camera.
 Carry out the Installation as described below
Follow 4.34 Installation Instruction..
Follow the 5.6 Reassembly instructions!

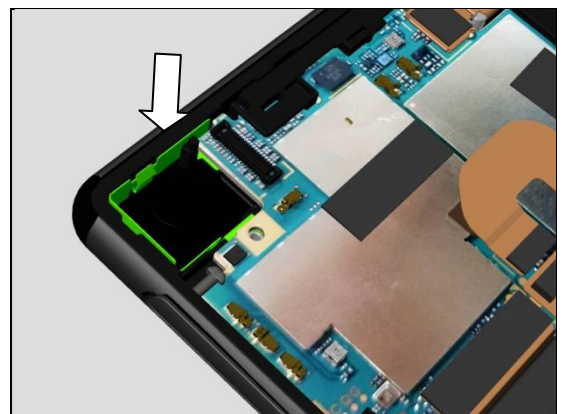
REMOVAL

Remove the Shield Main Camera from its cavity.

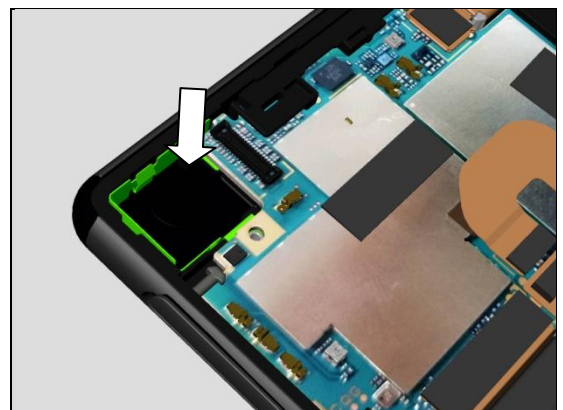


INSTALLATION

Place the new Shield Main Camera into its cavity.



Press with your finger to secure the position.



Replacement

4.34 Main Camera & Cushion Camera BtB

Follow the 3.1 Disassembly instructions!

Follow 4.8 Removal instructions.

Carry out the Removal as described below.

Prepare the new Main Camera & Cushion Camera BtB.

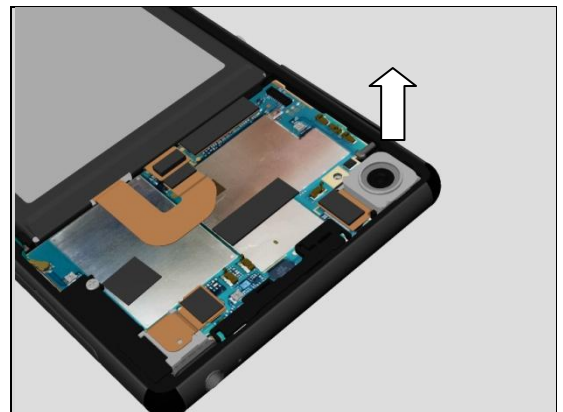
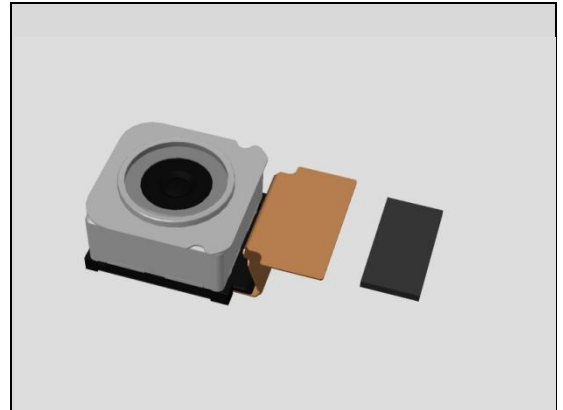
Carry out the Installation as described below.

Follow 4.8 Installation instructions.

Follow the 5.6 Reassembly instructions!

REMOVAL

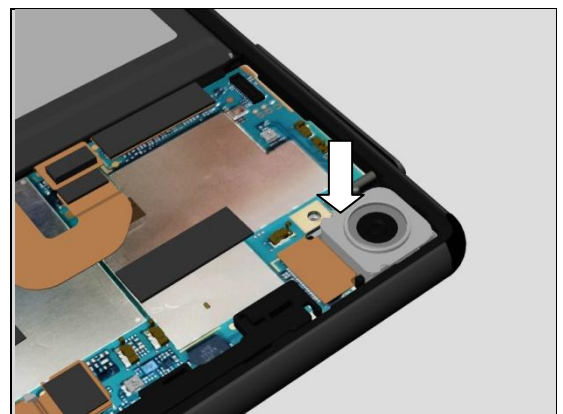
Remove the Main Camera and Cushion Camera BtB.



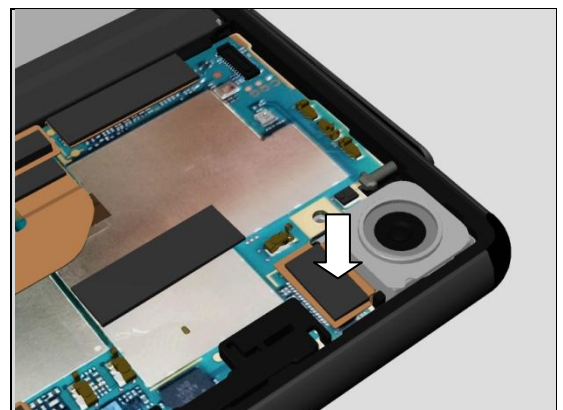
INSTALLATION

Place Main Camera into its Cavity first.

Connect its BtB connector onto Main PBA.



Assemble the new Cushion Camera BtB.



Replacement

4.35 Label tray

Follow the 3.1 – 3.6 Disassembly instructions!

Follow the 4.21, 4.37 Removal instructions!

Carry out the Removal as described below.

Prepare the new Label tray.

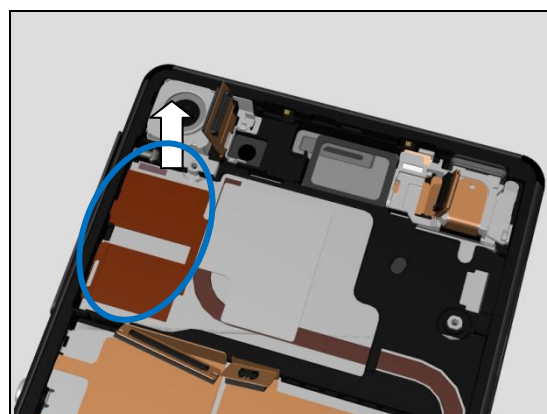
Carry out the Installation as described below.

Follow the 4.21, 4.37 Installation instructions!

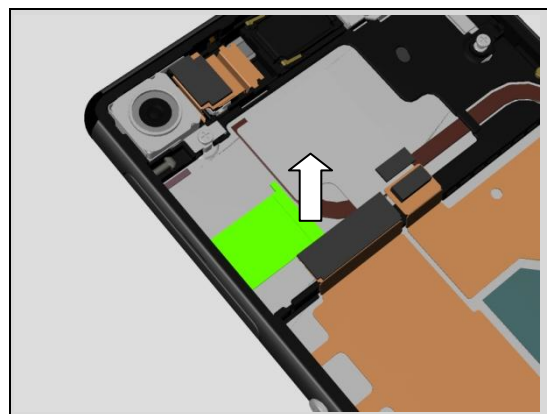
Follow the 5.1 – 5.6 Reassembly instructions!

REMOVAL

Remove the Label tray (D6633, L55u) from Front Assy.

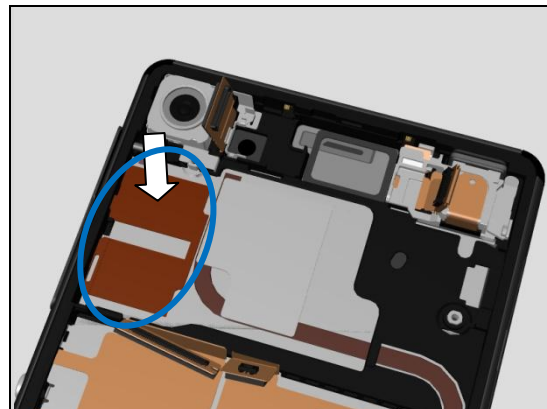


Remove the Label tray (L55t) from Front Assy.



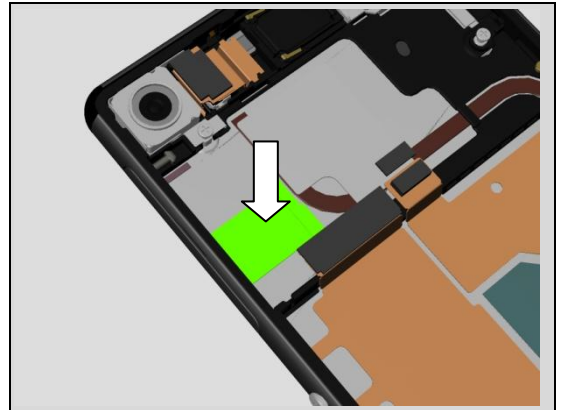
INSTALLATION

Assemble the Label tray (D6633, L55u) on Front Assy.



Replacement

Assemble the Label tray (L55t) on Front Assy.



Replacement

4.36 Liquid indicator

Follow the 3.1 – 3.6 Disassembly instructions!
 Carry out the Removal as described below.
 Prepare the new Liquid indicator.
 Carry out the Installation as described below.
Follow the 5.1 – 5.6 Reassembly instructions!

REMOVAL

Remove the Liquid indicator from Front Assy.

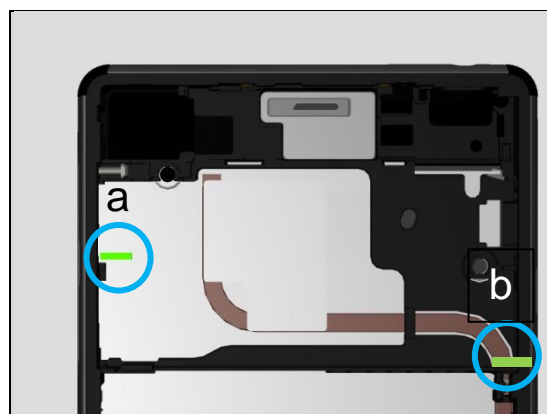
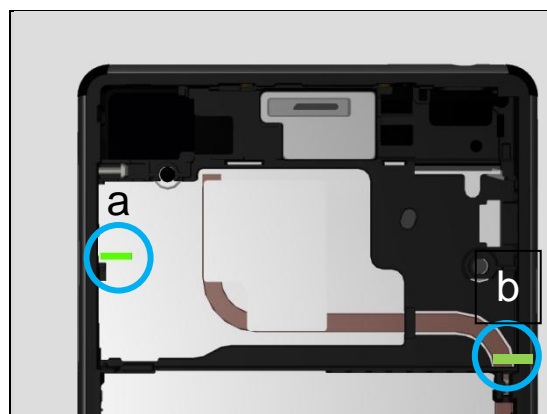
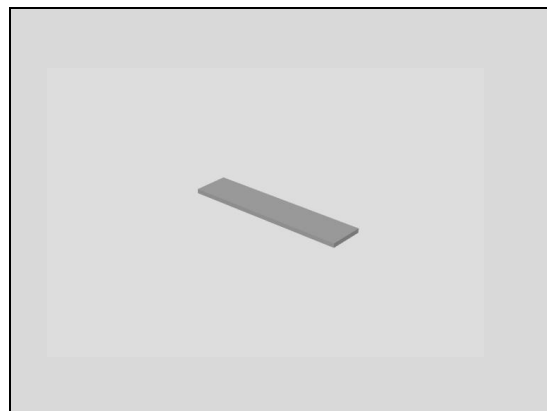
Scrap! Cannot be reused.

Liquid indicator (b) is attached on vertical side.

INSTALLATION

Align and press to attach new Liquid indicator on Front Assy.

Liquid indicator (b) is attached on vertical side.



Replacement

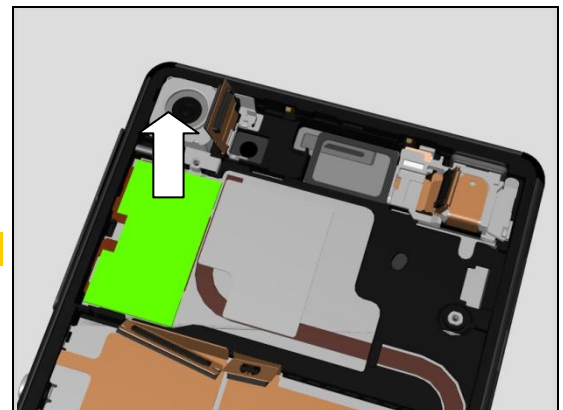
4.37 Label Guide

Follow the 3.1 – 3.6 Disassembly instructions!
 Carry out the Removal as described below.
 Prepare the new Label Guide.
 Carry out the Installation as described below.
Follow the 5.1 – 5.6 Reassembly instructions!

REMOVAL

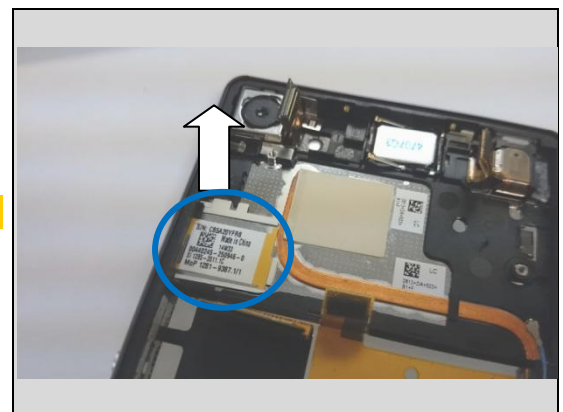
Remove the Label Guide (D6633, L55u) from Front Assy.

Scrap! Cannot be reused.



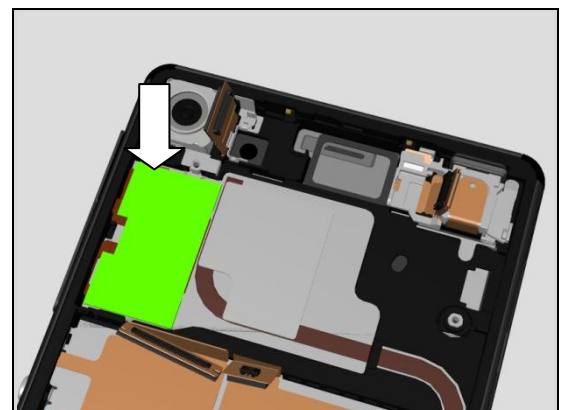
Remove the Label Guide (L55t) from Front Assy.

Scrap! Cannot be reused.



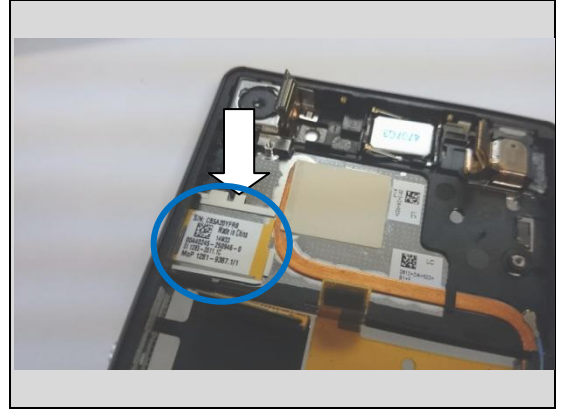
INSTALLATION

Place new Label Guide (D6633, L55u) on Front Assy.



Replacement

Place new Label Guide (L55t) on Front Assy.



Replacement

4.38 Holder Receiver sub assembly

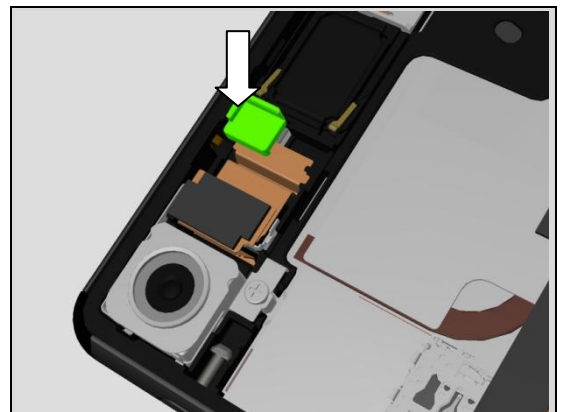
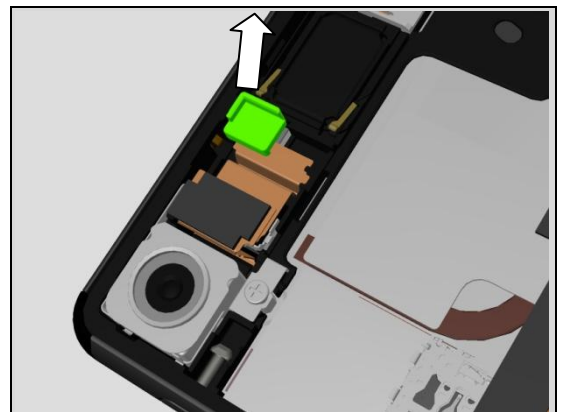
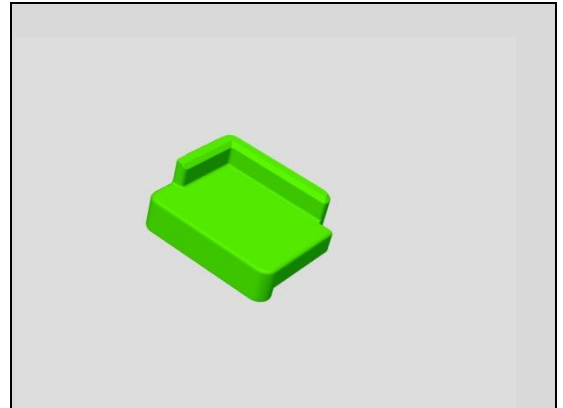
Follow the 3.1 – 3.6 Disassembly instructions!
 Carry out the Removal as described below.
 Prepare the new Holder Receiver sub assembly.
 Carry out the Installation as described below.
Follow the 5.1 – 5.6 Reassembly instructions!

REMOVAL

Remove the Holder Receiver sub assembly from its cavity.

INSTALLATION

Place a new Holder Receiver sub assembly into its cavity



Replacement

4.39 Holder key volume

Follow the 3.1 – 3.6 Disassembly instructions!

Carry out the Removal as described below.

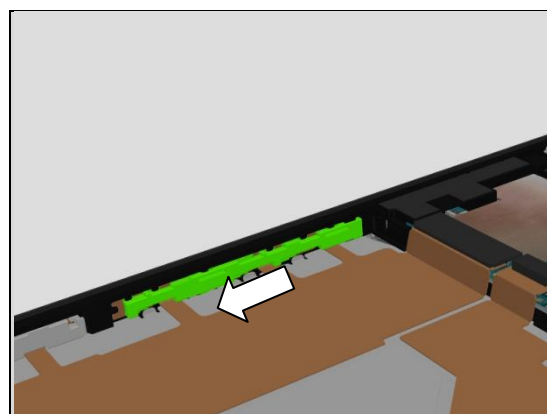
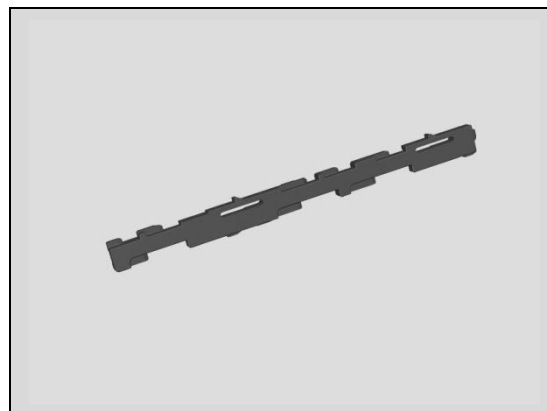
Prepare the new Holder key volume.

Carry out the Installation as described below.

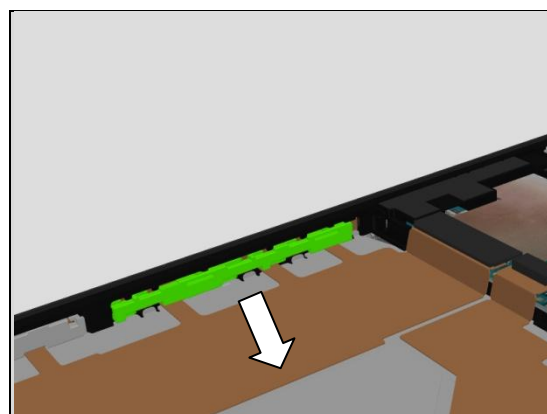
Follow the 5.1 – 5.6 Reassembly instructions!

REMOVAL

Push the Holder key volume as shown direction to release its hooks first.

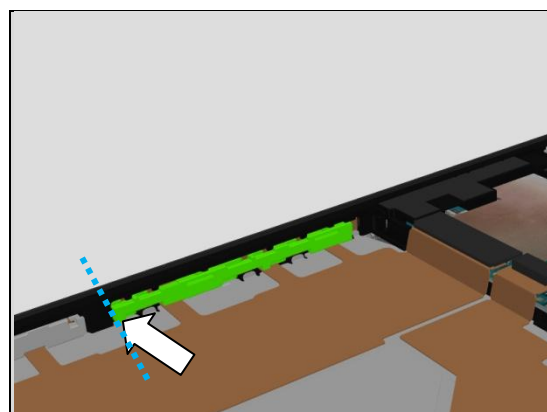


Remove the Holder key volume from Front Assy.



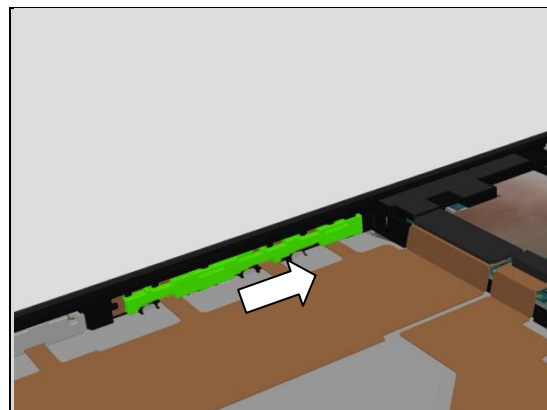
INSTALLATION

Assemble the Holder key volume from left side as shown.



Replacement

Then push the Holder key volume to right side as shown to lock its hooks.



Replacement

4.40 Magnetic connector

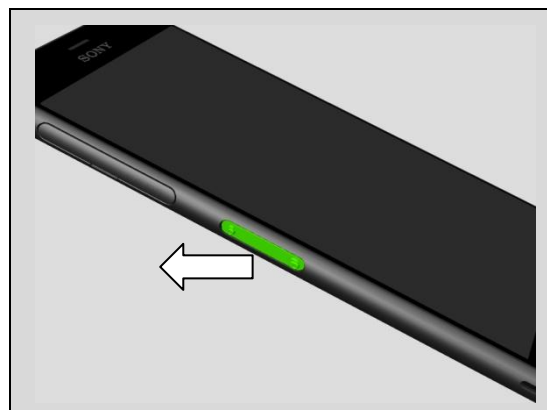
Carry out the Removal as described below.
Prepare the new Magnetic connector.
Carry out the Installation as described below.

REMOVAL

Remove the Magnetic connector from phone.

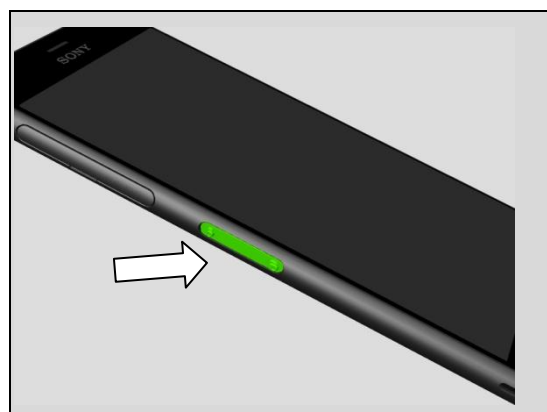
Scrap! Cannot be reused.

Clean the surplus adhesive left on its cavity.



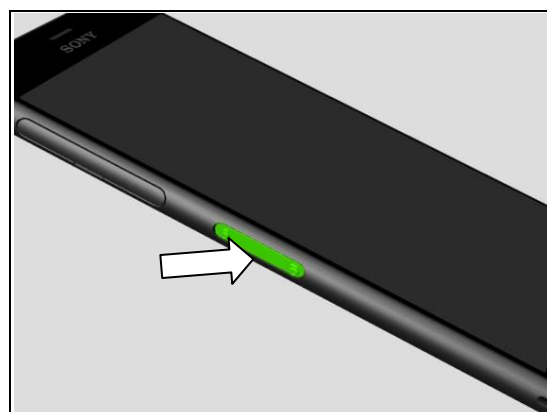
INSTALLATION

Place the new Magnetic connector onto its cavity.
Press to secure the attachment.



Then use Side Panel press, Side Panel Press Head and Charge connector press pad with the force of 60N for five Seconds. According to 1003-9107 Tool Catalogue – mechanical and document Side Panel press Instruction for Use.

Note: Use the pressing fixture of Charge connector press pad (1275-4443) to press it.



Replacement

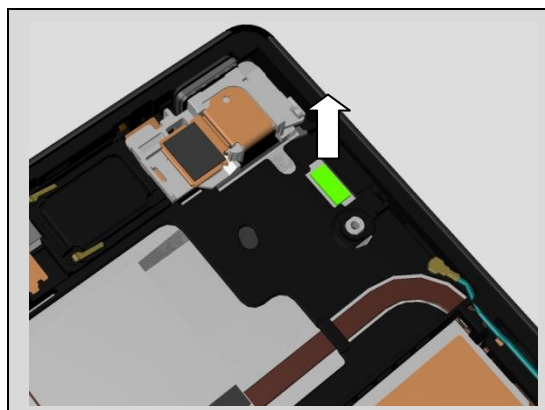
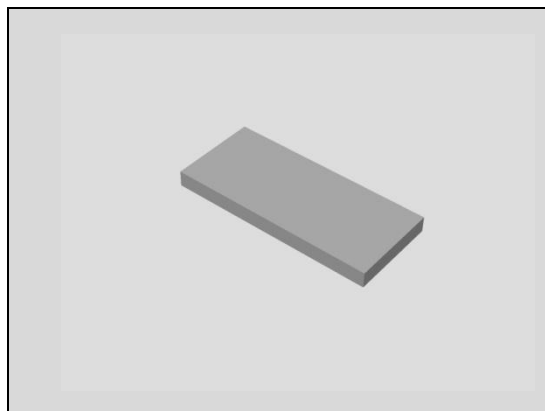
4.41 Gasket conductive USB

Follow the 3.1 – 3.4 Disassembly instructions!
 Carry out the Removal as described below.
 Prepare the new Gasket conductive USB.
 Carry out the Installation as described below.
Follow the 5.5 – 5.8 Reassembly instructions!

REMOVAL

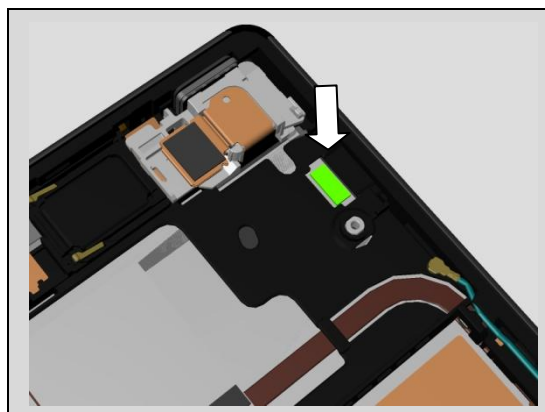
Remove the Gasket conductive USB from Front Assy.

Scrap! Cannot be reused.



INSTALLATION

Attach new Gasket conductive USB on Front Assy.



Replacement

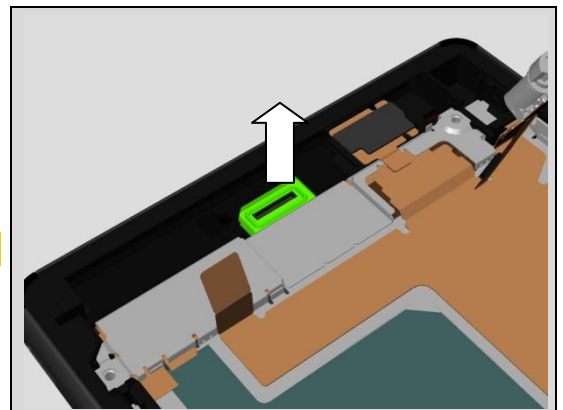
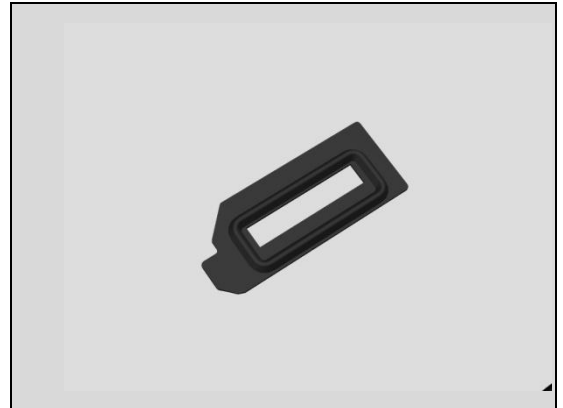
4.42 Gasket speaker rubber

Follow the 3.1 – 3.4 Disassembly instructions!
 Carry out the Removal as described below.
 Prepare the new Gasket speaker rubber.
 Carry out the Installation as described below.
Follow the 5.3 – 5.6 Reassembly instructions!

REMOVAL

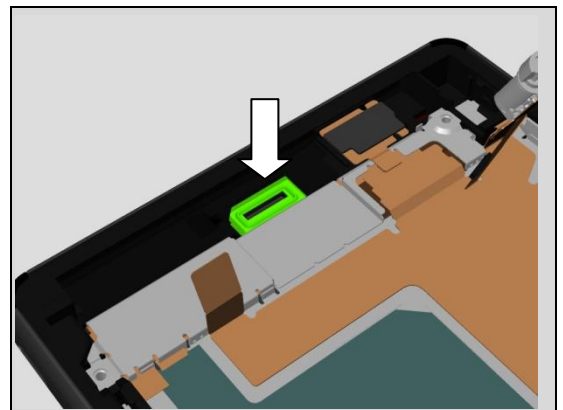
Remove the Gasket speaker rubber from its cavity.

Scrap! Cannot be reused.



INSTALLATION

Place the Gasket speaker rubber into its cavity.
 Press to secure its attachment.



Replacement

4.43 Cushion Chat Camera

Follow the 3.1 – 3.6 Disassembly instructions!

Carry out the Removal as described below.

Prepare the Cushion Chat Camera.

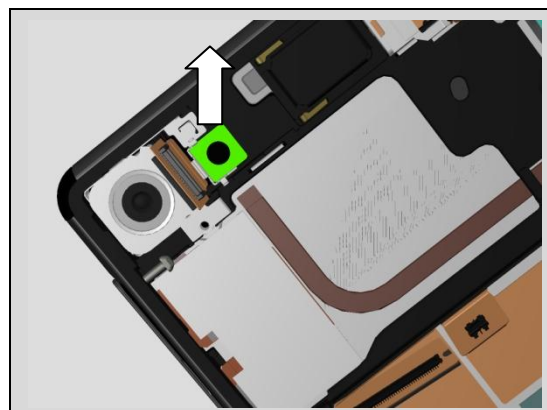
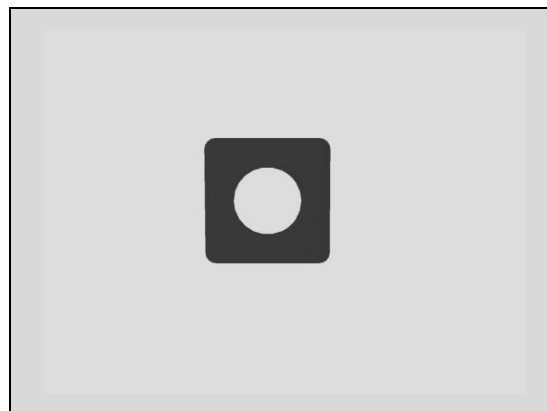
Carry out the Installation as described below.

Follow the 5.1 – 5.6 Reassembly instructions!

REMOVAL

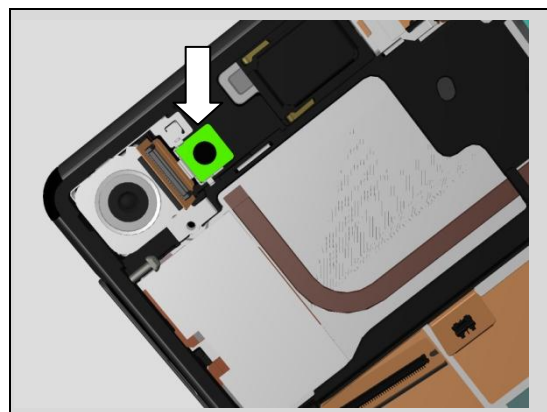
Remove the Cushion Chat Camera from its cavity.

Scrap! Cannot be reused.



INSTALLATION

Assemble the new Cushion Chat Camera into its cavity.



Replacement

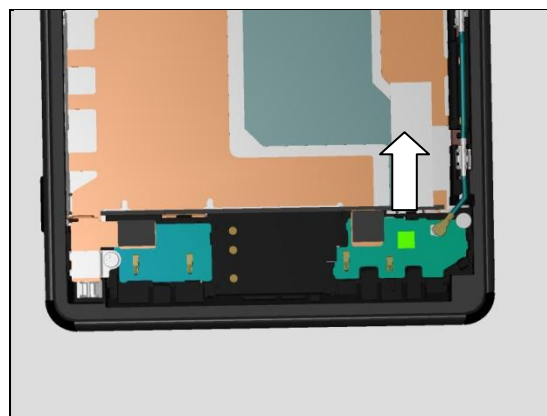
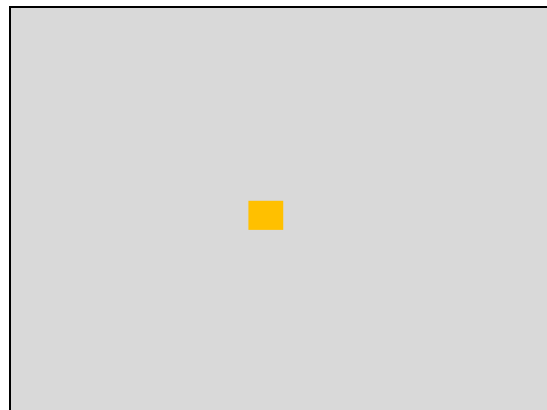
4.44 Sheet Sub PBA

Follow the 3.1 – 3.6 Disassembly instructions!
 Carry out the Removal as described below.
 Prepare the Sheet Sub PBA.
 Carry out the Installation as described below.
Follow the 5.1 – 5.6 Reassembly instructions!

REMOVAL

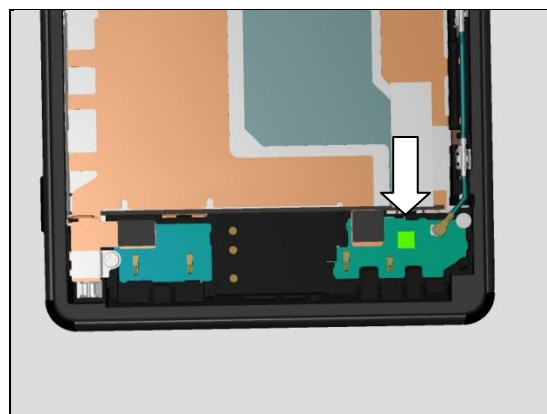
Remove the Sheet Sub PBA from Sub PBA-A IC.

Scrap! Cannot be reused.



INSTALLATION

Assemble the new Sheet Sub PBA on Sub PBA-A IC.



Replacement

4.45 Lightguide 3 LED

Follow the 3.1 Disassembly instructions!

Carry out the Removal as described below.

Prepare the new Lightguide 3 LED.

Carry out the Installation as described below.

Follow the 5.6 Reassembly instructions!

Note: 1. It is mandatory to replace this Lightguide 3 LED on Audio Jack for White color Phone.

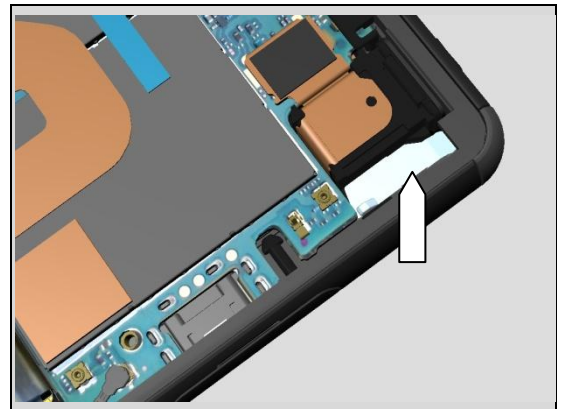
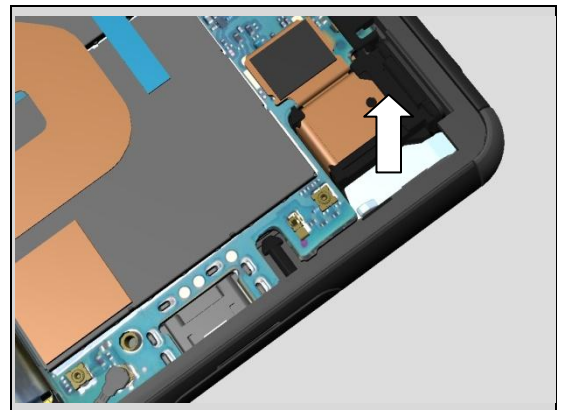
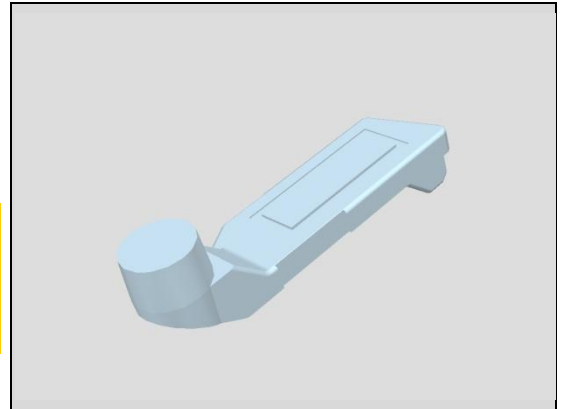
2. For Black and Copper color phone, no need to replace the part.

REMOVAL

Remove the Lightguide 3 LED with a pair of tweezers.

INSTALLATION

Place a new Lightguide 3 LED on the Audio Jack with a pair of tweezers.



Replacement

4.46 Film for TP FPC

Follow the 3.1 – 3.6 Disassembly instructions!

Carry out the Removal as described below.

Prepare the Film for TP FPC.

Carry out the Installation as described below.

Follow the 5.1 – 5.6 Reassembly instructions!

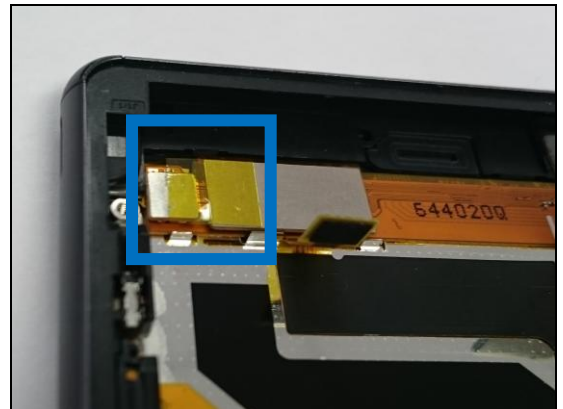
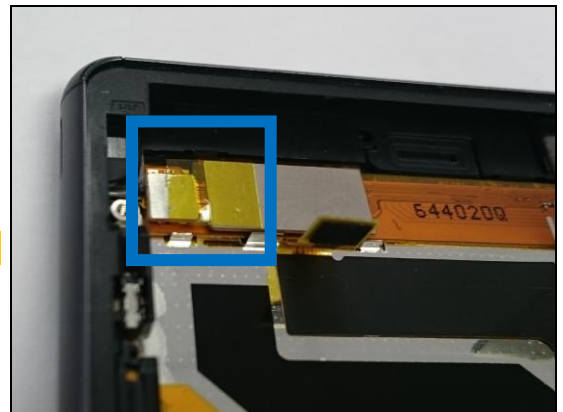
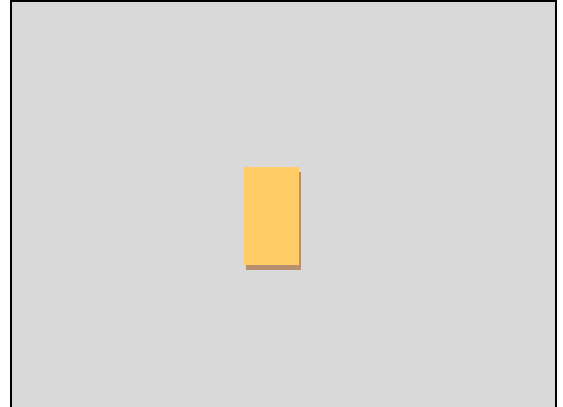
REMOVAL

Remove the Film for TP FPC from Front Assy.

Scrap! Cannot be reused.

INSTALLATION

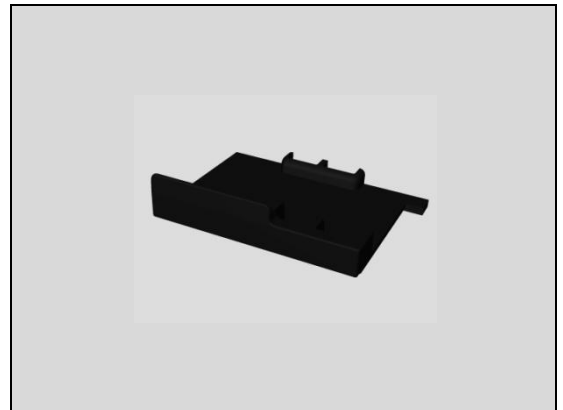
Assemble the new Film for TP FPC on Front Assy.



Replacement

4.47 Dummy SIM assy (L55t only)

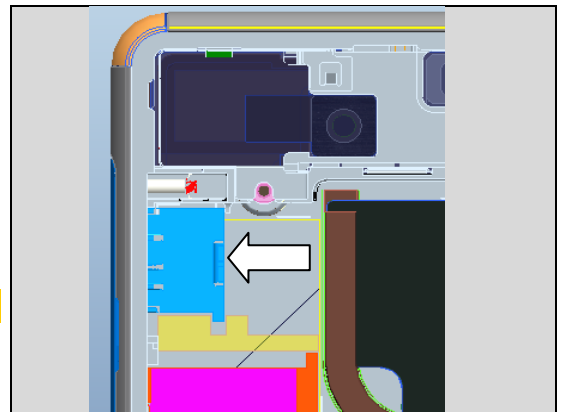
Follow the 3.1 – 3.6 Disassembly instructions!
 Carry out the Removal as described below.
 Prepare the Dummy SIM assy.
 Carry out the Installation as described below.
Follow the 5.1 – 5.6 Reassembly instructions!



REMOVAL

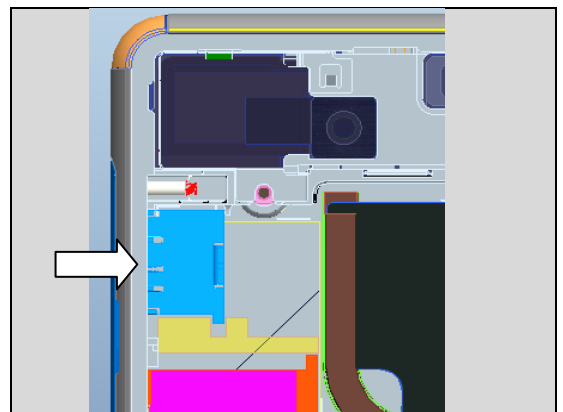
Push the Dummy SIM assy out as shown.
 Remove the Dummy SIM assy

Note: Only L55t has this Dummy SIM assy.

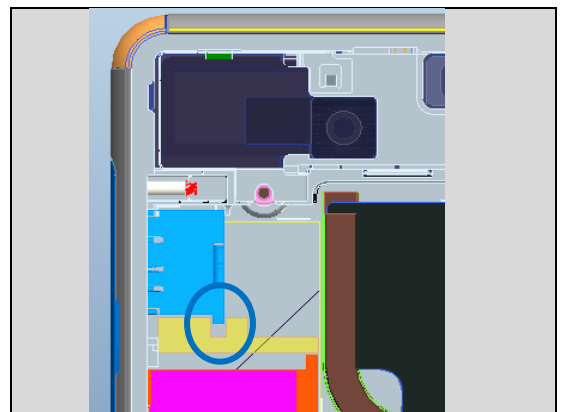


INSTALLATION

Insert the new Dummy SIM assy as shown.



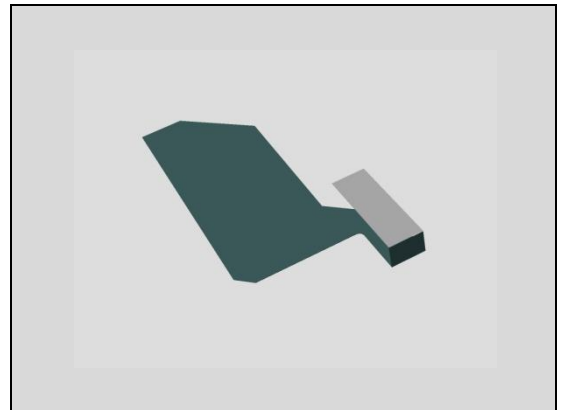
Use the Label Guide gap as shown to fix its position



Replacement

4.48 Adhesive Battery Front

Follow the 3.1 – 3.2 Disassembly instructions!
 Carry out the Removal as described below.
 Prepare the Adhesive Battery Front.
 Carry out the Installation as described below.
Follow the 5.5 – 5.6 Reassembly instructions!

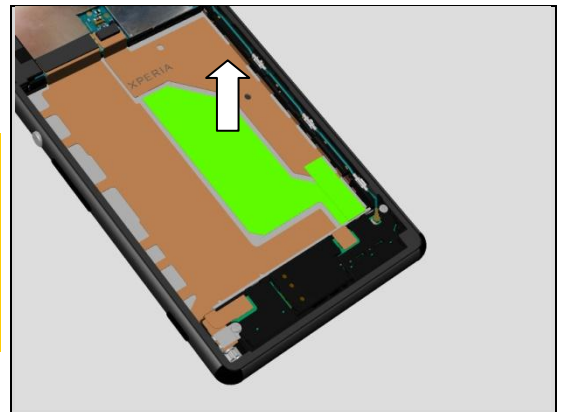


REMOVAL

Remove the old Adhesive Battery Front left on Front Assy.

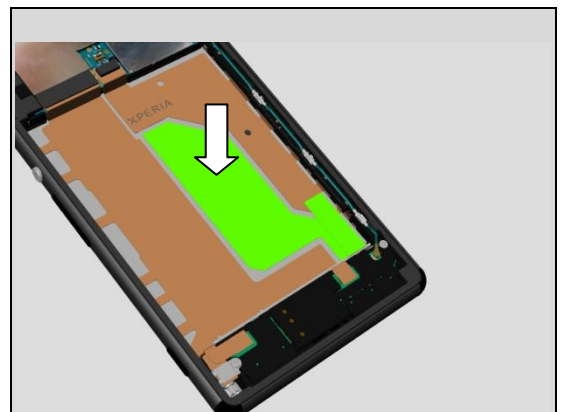
Note: old Adhesive Battery Front left on Front Assy cannot be reused. Scrap!

If the film part of Adhesive Battery Front is left on Embedded Battery without damage, this film part on Embedded Battery could be reused together with Embedded Battery.



INSTALLATION

Assemble the new Adhesive Battery Front on Front Assy.



Replacement:

4.49 Adhesive WP Audio Jack

Follow the 3.1 – 3.6 Disassembly instructions!

Follow 4.24 Removal instructions.

Carry out the Removal as described below.

Prepare the Adhesive WP Audio Jack.

Carry out the Installation as described below.

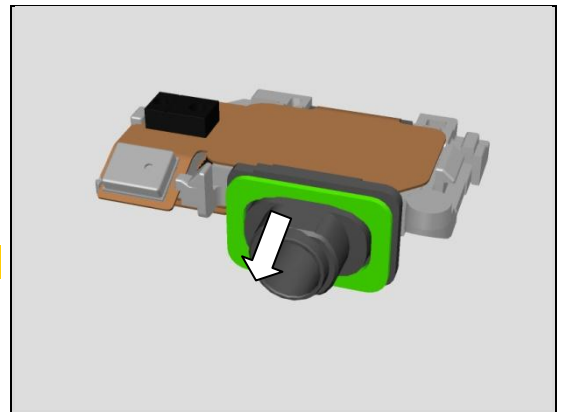
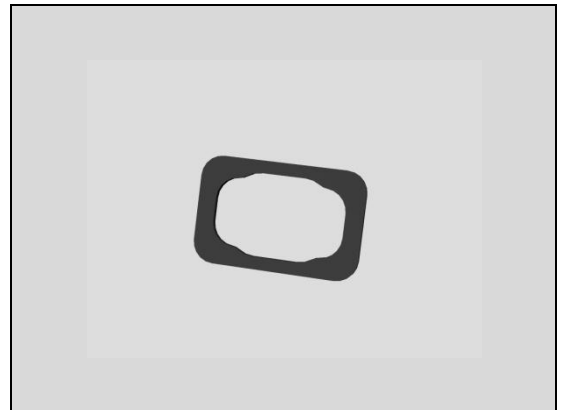
Follow 4.24 Installation instructions.

Follow the 5.1 – 5.6 Reassembly instructions!

REMOVAL

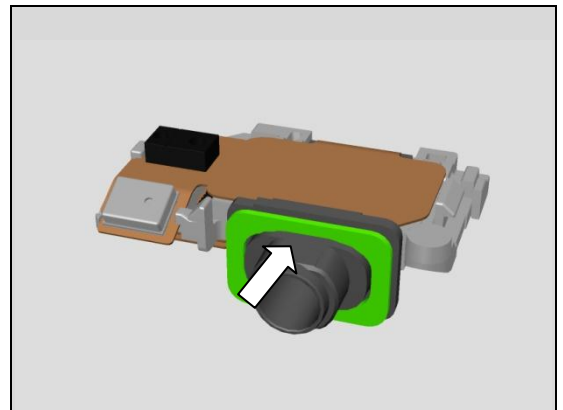
Remove the old Adhesive WP Audio Jack from Audio Jack.

Note: Scrap! Cannot be reused.



INSTALLATION

Assemble new Adhesive WP Audio Jack on Audio Jack.



Replacement

4.50 Board Swap - Replacement

Follow the 3.1 – 3.6 Disassembly instructions!

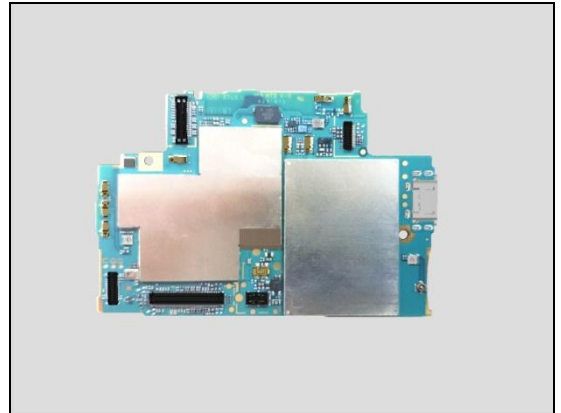
Follow the 4.18 Removal instructions!

Replace the Swap Board.

Reuse the Main Camera and the Camera Chat.

Follow the 4.18 Installation instructions!

Follow the 5.1 – 5.6 Reassembly instructions!



Press the On/Off key to power on the unit, place unit on flat desk and wait 4 minutes until system boot up has been completed.

Please DO NOT move the unit during the start up until "Select Language" menu is shown on the display!

After "Select Language" menu, turn off the unit.

Follow the calibrations in Trouble Shooting Application 1262-6643 – mechanical

Accelerometer

Gyroscope

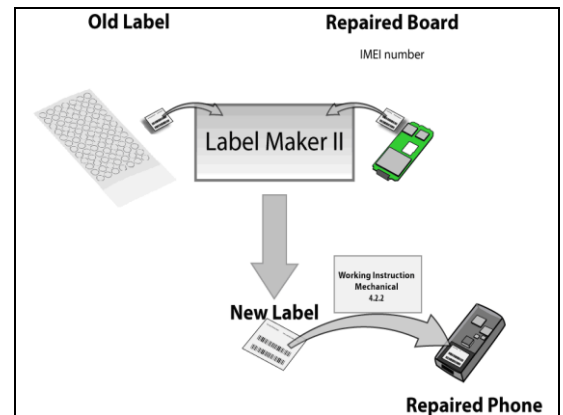
Noise cancelling

Replacement

4.51 Board Swap – Change Label

CHANGE LABEL

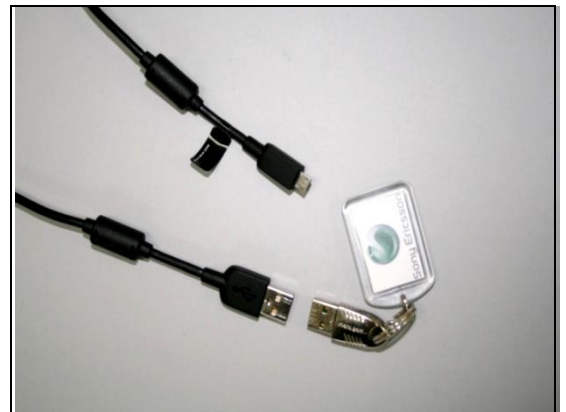
Follow the instructions in the Generic Repair Manual –
Build swap for change of label.



4.52 Board Swap – Customize of Software

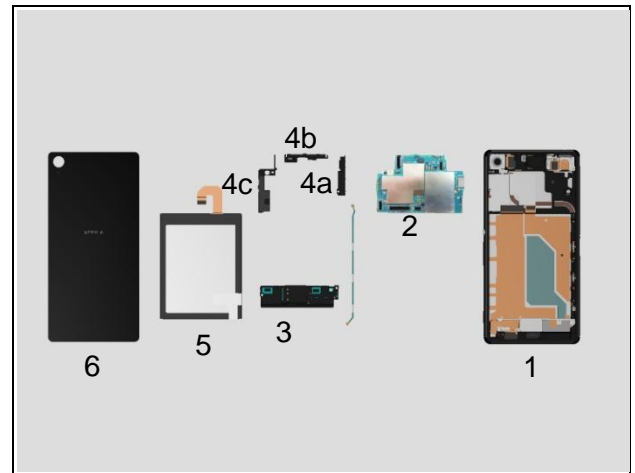
CUSTOMIZE OF SOFTWARE

Follow the instructions in the Generic Repair Manual –
Build swap for customization of the software.



5 Reassembly

1. Front Assy
2. Main PBA
3. Holder Speaker sub assembly
4. Cover Holder –A(a), Sub Antenna(b), Antenna BT + WLAN(c)
5. Embedded Battery
6. Rear Panel



5.1 Front Assy

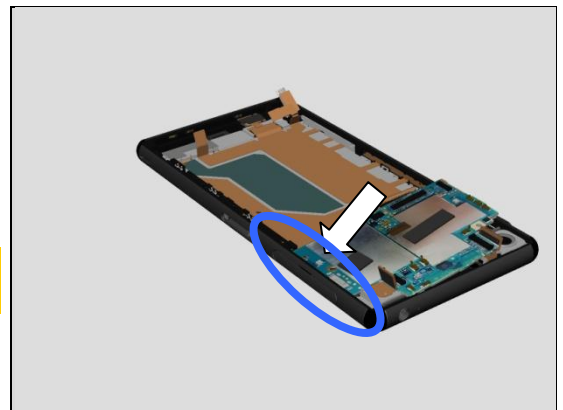
Prepare the Front Assy.



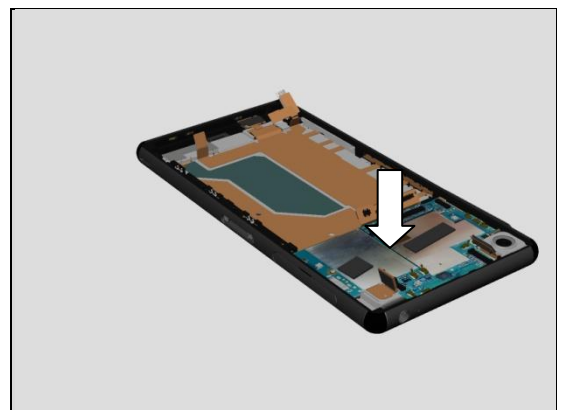
5.2 Main PBA

Place the Main PBA into Front Assy.
Align with the USB connector first.

Note: *Pls make sure that all FPC BtB connectors are above Main PBA.*

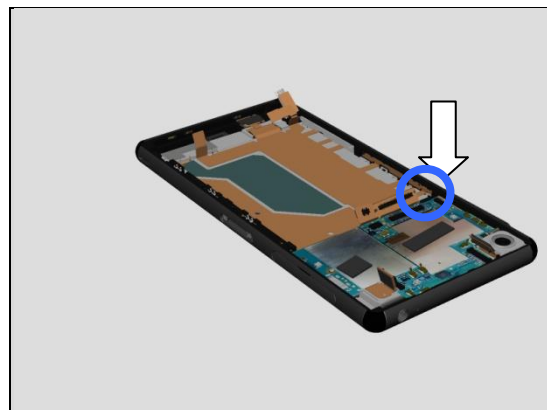


Put down Main PBA gently to secure the position.

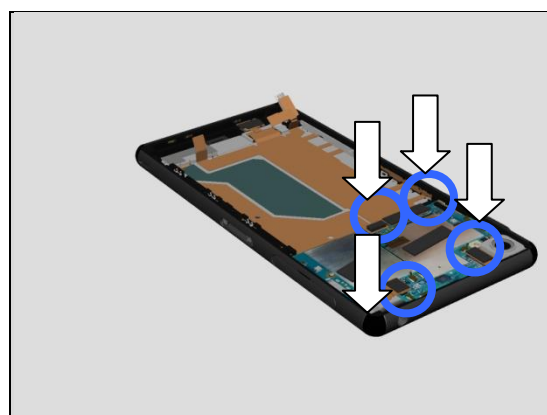


Reassembly

Make sure the Hook is is properly assembled.

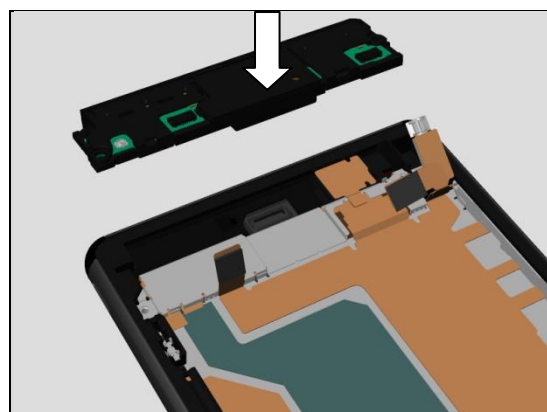


Connect all the four the BtB connectors on Main PBA.

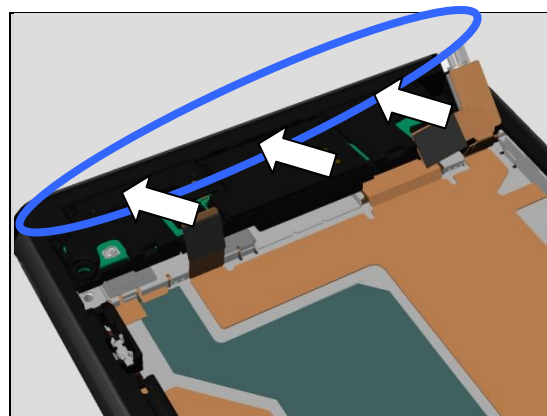


5.3 Holder Speaker sub assembly

Place the Holder Speaker sub assembly onto Front Assy.



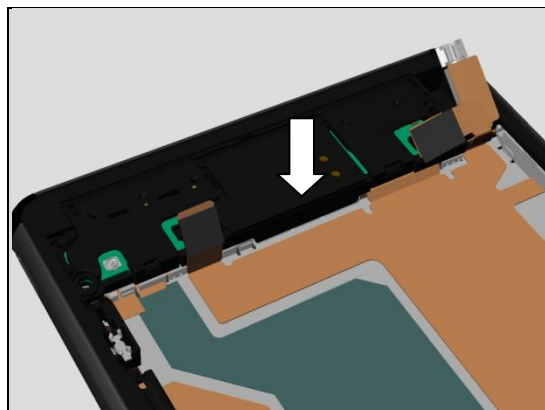
Insert the top side of Holder Speaker sub assembly into Front Assy first.



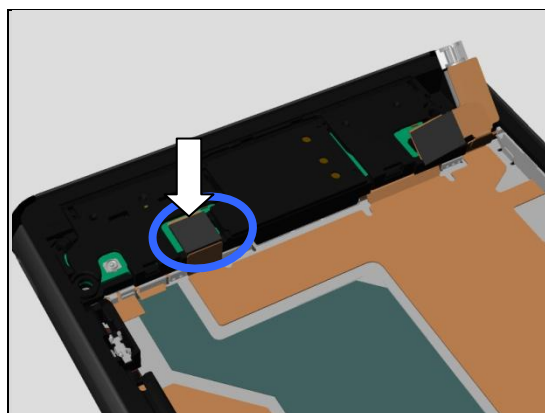
Reassembly

Put down the Bottom side of Holder Speaker sub assembly then.

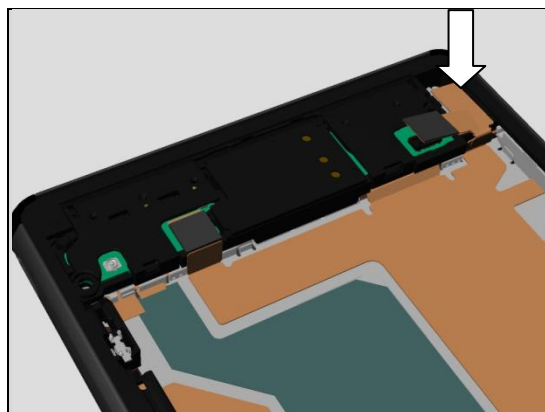
Press to secure its position.



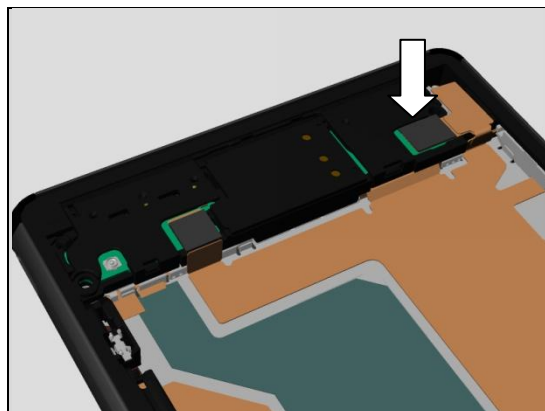
Connect the BtB connector of the Relay FPC PBA.



Turn over the vibrator FPC and press it to secure its position.



Connect the BtB connector of the Holder Speaker sub assembly.

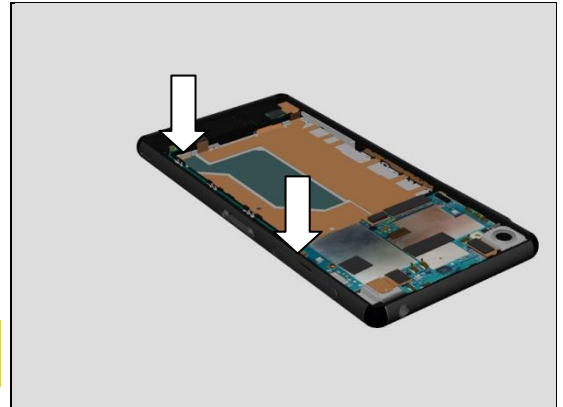


Reassembly

5.4 Cover Holder –A, Sub Antenna, Antenna BT + WLAN

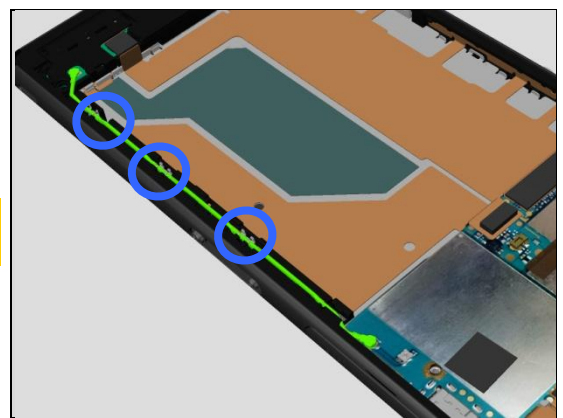
Place the RF Cable back, Connect and press both two RF connectors.

Note: RF Cable has direction. The long metal side is towards Main PBA.

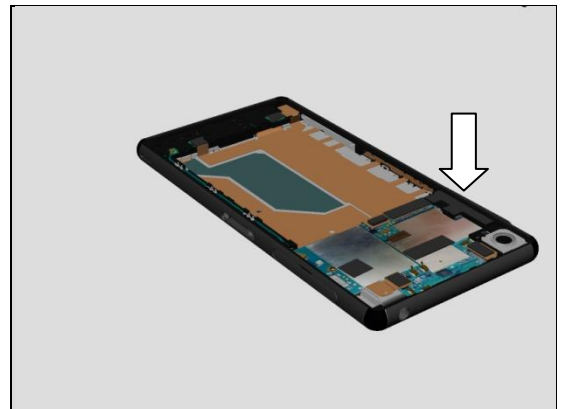


Insert RF Cable into its cavity.

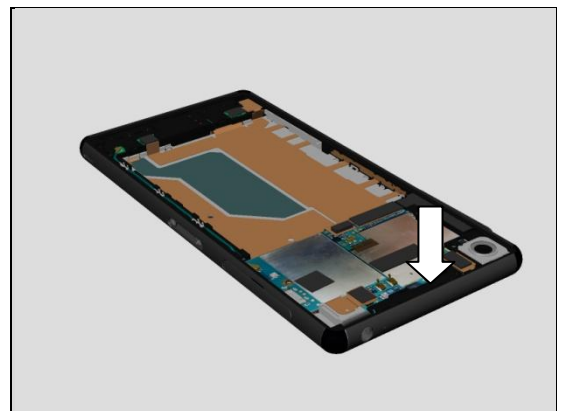
Note: RF Cable has direction. The long metal side is towards Main PBA.



Place the the Antenna BT + WLAN on Main PBA.

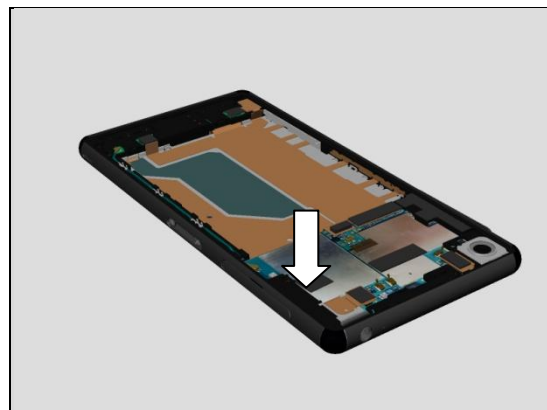


Place the the Sub Antenna on Main PBA.



Reassembly

Place the the Cover Holder –A on Main PBA.



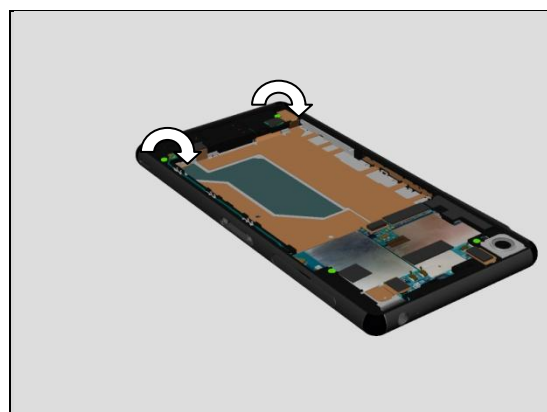
Apply 12 ± 1 Ncm torque on Main PBA when tightening the Screw Bits (JCIS No 0).

Take new Screws!

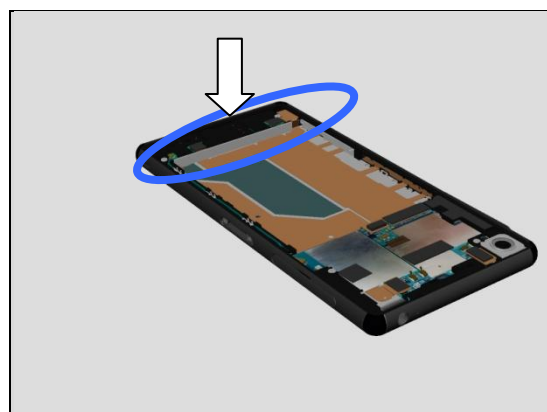


Apply 8 ± 1 Ncm torque on Holder Speaker sub assembly when tightening the Screw Bits (JCIS No 0).

Take new Screws!



Assemble the Cushion Battery at its correct position.



Reassembly

5.5 Embedded Battery

Note: Visible inspection of the Embedded Battery. There is risk to damage the cell laminate (Pinhole, Bubbles or Wrinkles) when the Adhesive Battery Front is removed.

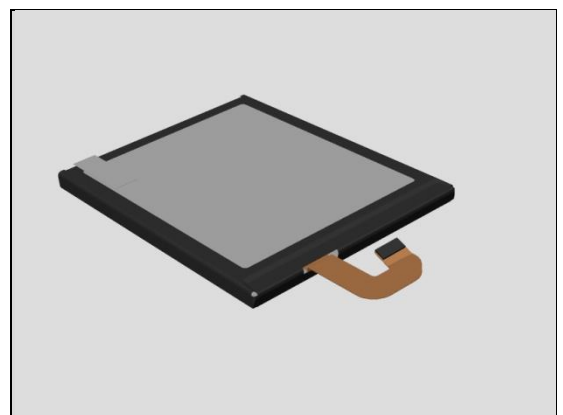
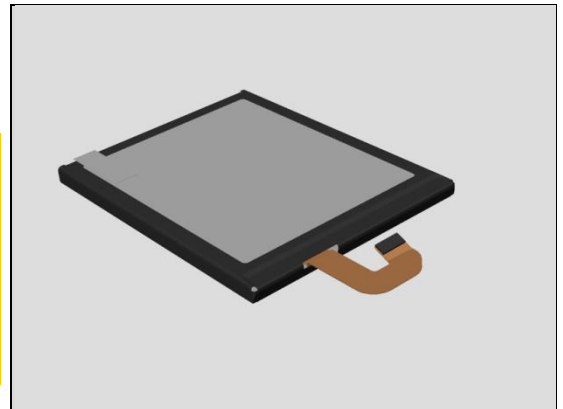
If the Embedded Battery is damaged, then It cannot be reused.

The film part of Adhesive Battery Front on Embedded Battery could be reused if it is not damaged.

Remove the old Adhesive Battery Front left on Front assy.

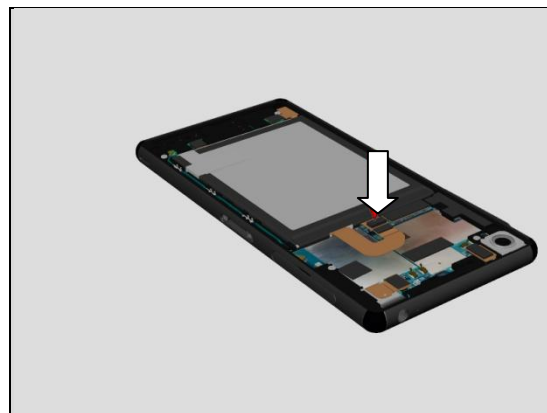
Attach the new Adhesive Battery Front on Front assy.

Note: if the film part of Adhesive Battery Front on Embedded Battery could be reused, then need to remove the new film part on Front assy.

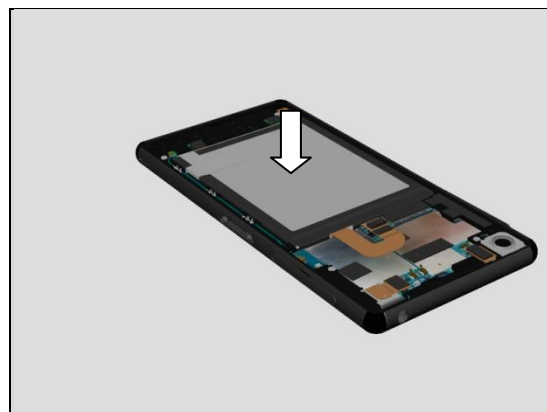


Reassembly

Place the Embedded Battery into its cavity.
Connector the BtB connectors on Main PBA.

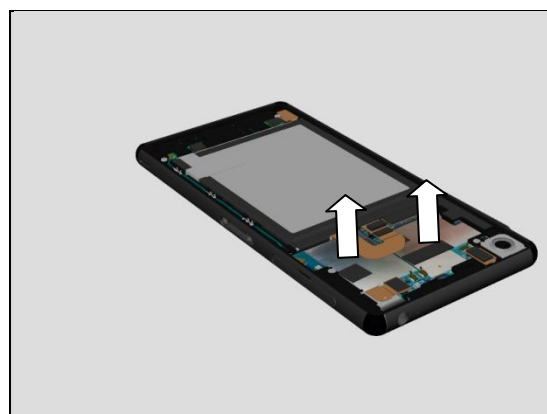


Press gently with your finger on the Embedded Battery to secure the attachment.

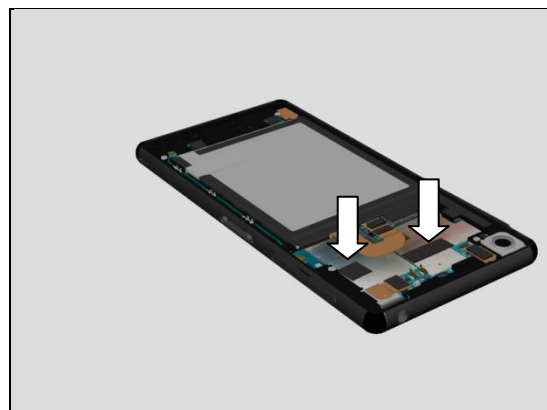


Remove the old Sheet ACO L and Sheet ACO R from Main PBA.

Note: Clean Rear Panel if there are some surplus adhesive left on Rear Panel.



Place new Sheet ACO L and Sheet ACO R on Main PBA.



Reassembly

5.6 Rea Panel

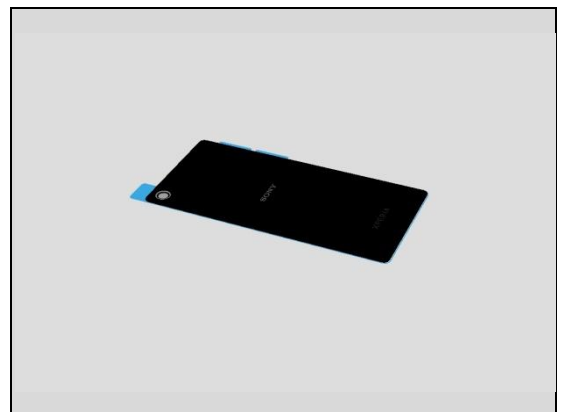
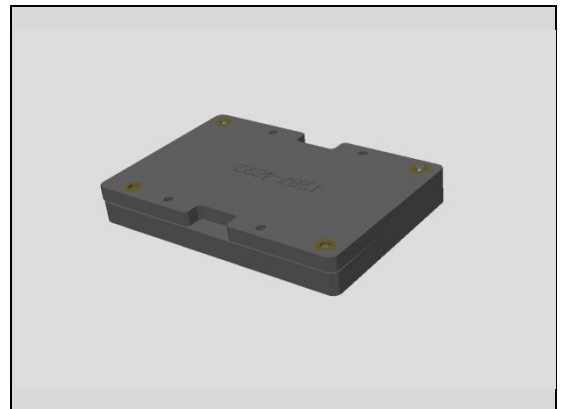
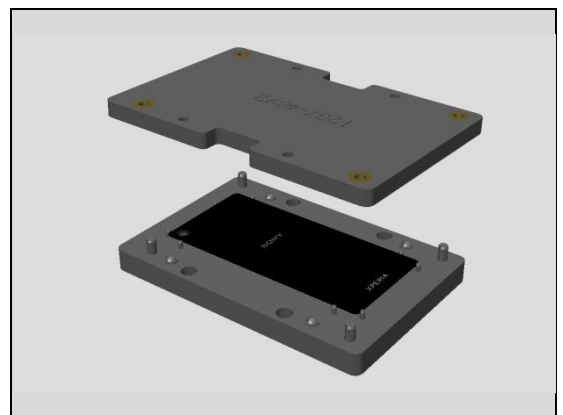
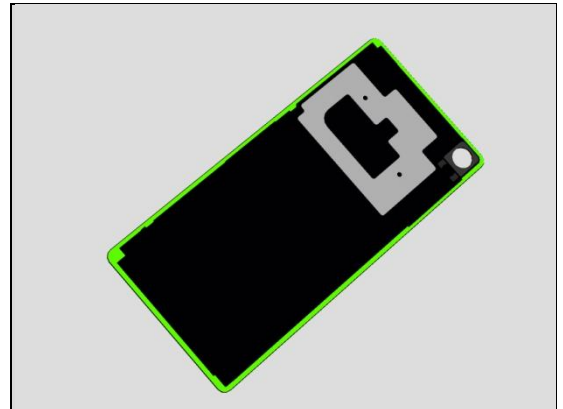
Remove the old Adhesive Rear Panel and all remaining of the Adhesive residue.

Clean the edges of the Rear Panel carefully with alcohol before the new Adhesive Panel Back is mounted. This action is done to secure the water resistant of the unit.

Place the new Adhesive Rear Panel in the Rear Panel adhesive alignment fixture and the Rear Panel in a correct Position.

Press to secure the attachment.

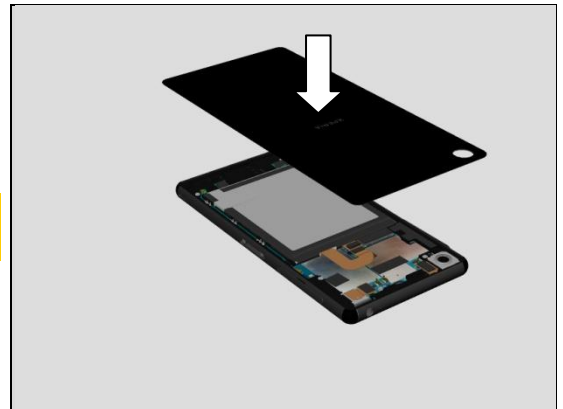
The Rear Panel is ready to be assembled.



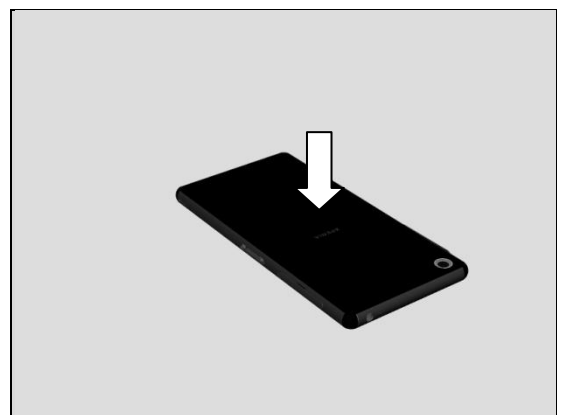
Reassembly

Place the Rear Panel on Core Unit at its correct position.

Use Isopropyl Alcohol - 99 % for clean around the edges of Front Assy before assembly Rear Panel.



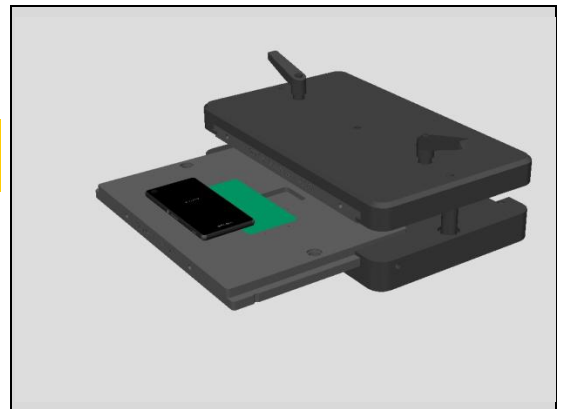
Press with fingers first to secure its attachment



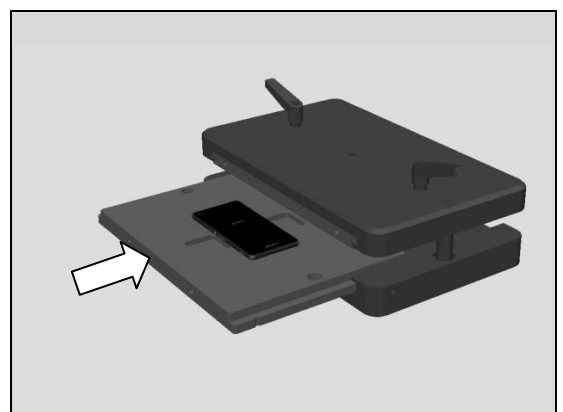
Upper inlay = Rear Panel Press Top Inlay

Lower inlay = Bottom Press Inlay

Place the phone in the Bottom Press Inlay and follow the instruction in 1003-9107 Tool Catalogue – mechanical and document Toothed Rack Press Instruction for use.

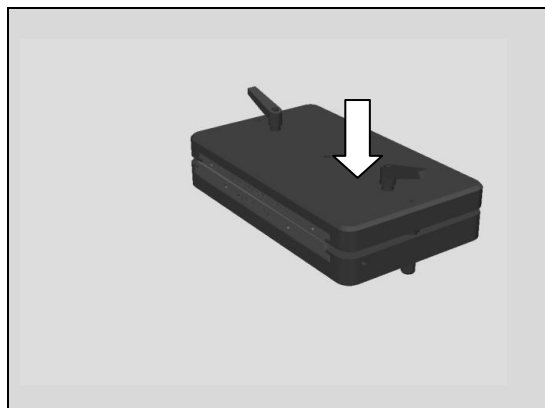


Insert the Bottom Press Inlay with Phone.

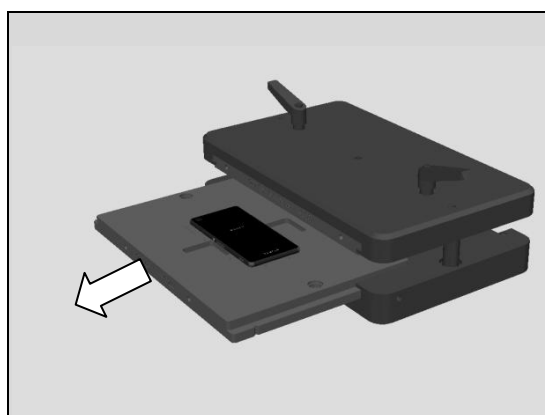


Reassembly

Press with 494 ± 60 N for 10 seconds
(the pressure value is adjusted for 600N because of the weight of the pressure fixture)



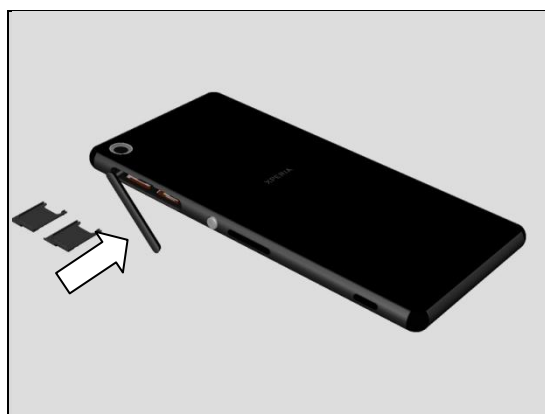
Remove the unit from the pressure fixture.



Insert SIM Tray into its cavity and close the Cap SIM.

Note:

1. Pay more attention about SIM tray direction.
2. D6633, L55u, D6683 have two SIM Trays. L55t has one SIM Tray.



6 Revision History

Rev.	Date	Changes / Comments
1	2014-09-12	Initial release
2	2014-10.30	Delete Sheet Sub ANT chapter, no need this part anymore. Add Lightguide 3 LED chapter for white color phone only.
3.	2014-11-05	Update chapter 4.24 and chapter 4.45 : Lightguide 3 LED chapter for white color phone only.
4	2014-11-27	Update Chapter 4.5 to add Sheet Battery Short & Sheet Battery Long.
5	2014-12-04	Update Chpater4.46 photo
6	2015-04-08	Add D6683